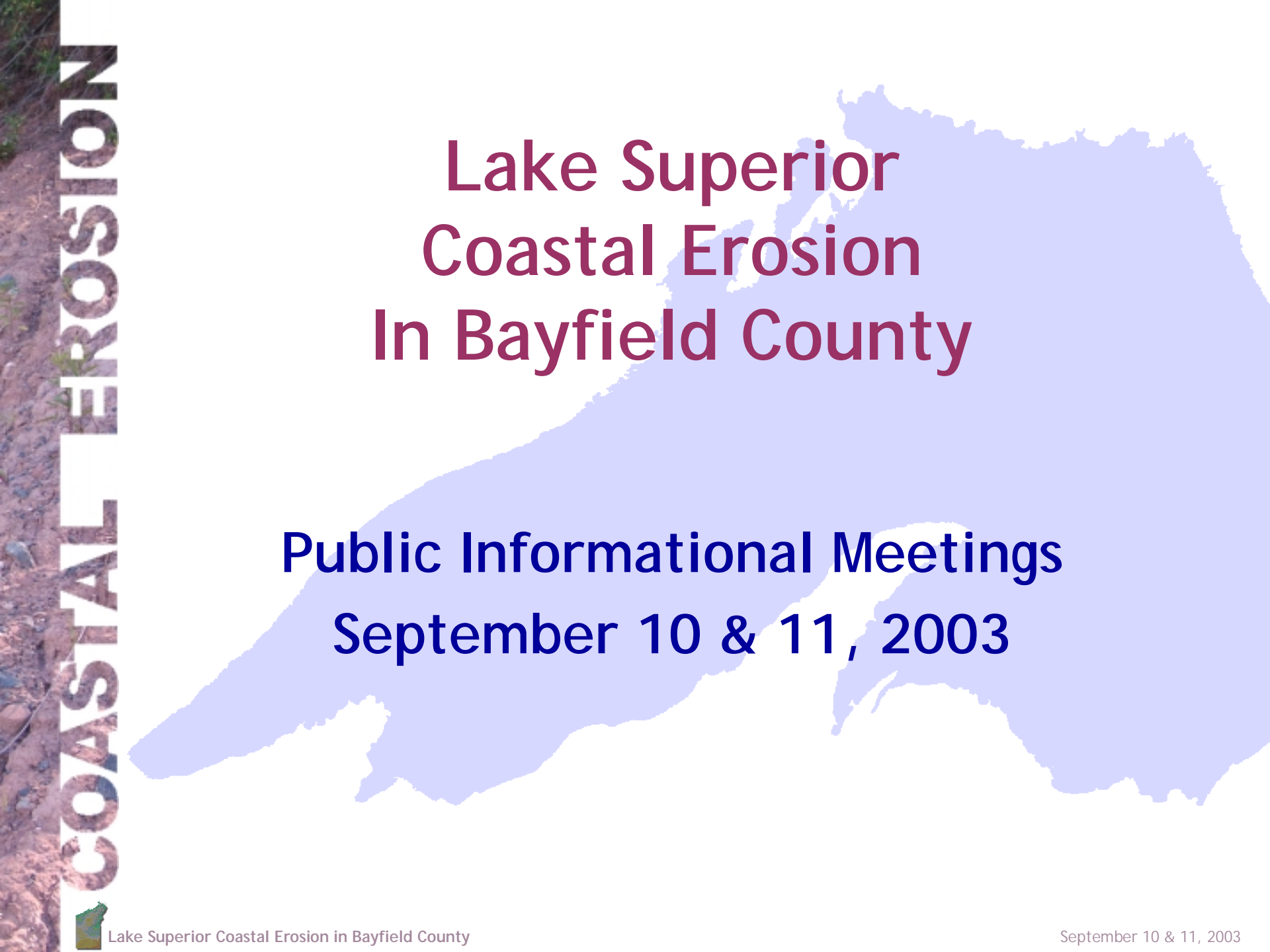




COASTAL EROSION

Welcome to the Lake Superior Coastal Erosion In Bayfield County Public Information Meetings





Lake Superior Coastal Erosion In Bayfield County

Public Informational Meetings
September 10 & 11, 2003

COASTAL EROSION



Once upon a time, (in a former life)...

- Why not performance standards?
- What is causing shoreline erosion?
- What is the rate of bluff recession?
- How can erosion hazards be reduced?

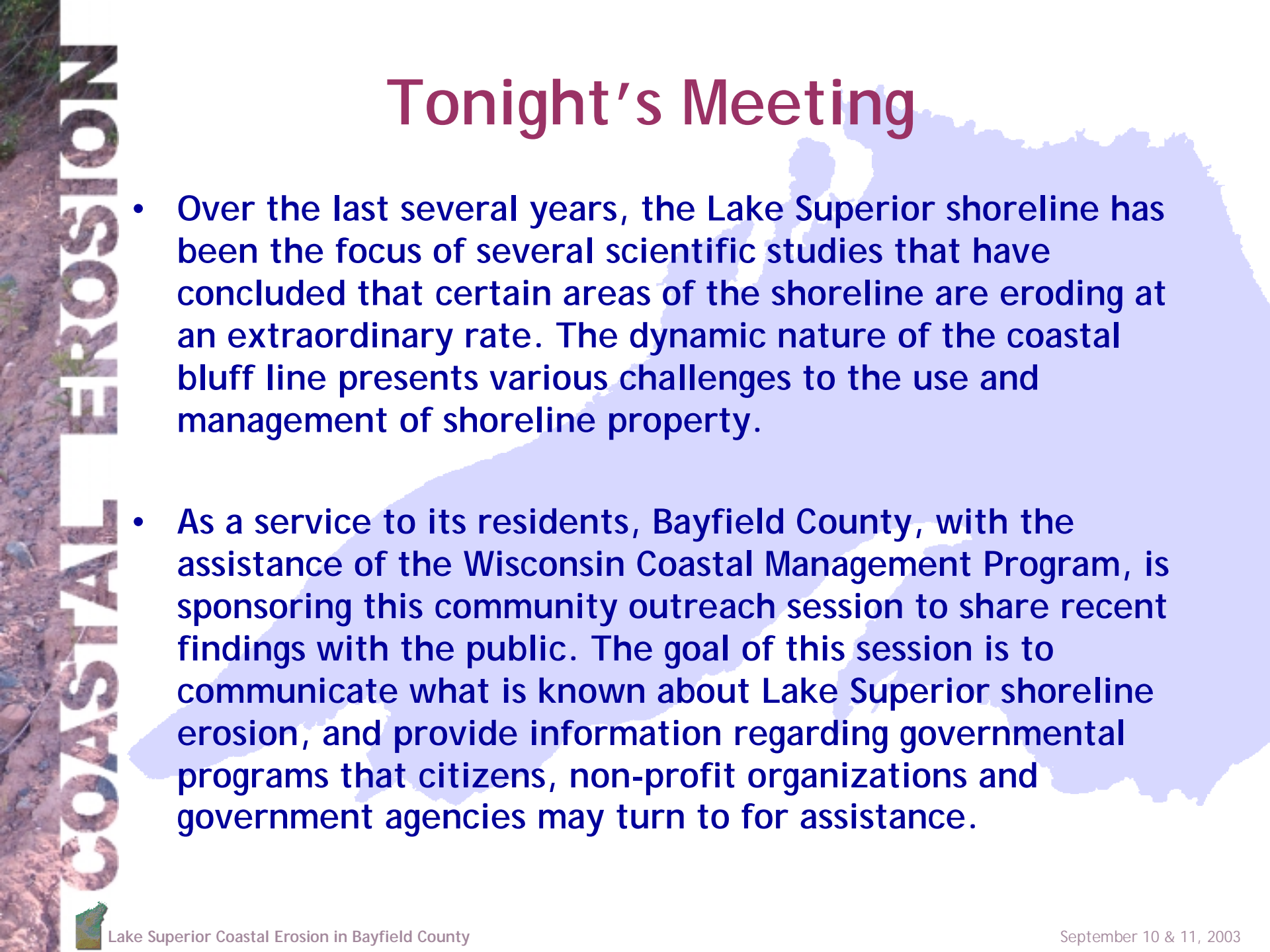




Seeking Enlightenment...

- Hess - "Study of Shoreline Erosion on the Western arm of Lake Superior"
- Andrews / et al - "...Red Clay Project..."
- Yanggen - "Regulations to Reduce Coastal Erosion Losses"
- Springman / Born - "Wisconsin's Shore Erosion Plan: An Appraisal of Options & Strategies"
- Keillor / Miller - "Coastal Processes Manual"

There have been few attempts to quantify shoreline recession since the 1970's --- *The very time period the coastline has experienced some of its greatest development activity*



Tonight's Meeting

- Over the last several years, the Lake Superior shoreline has been the focus of several scientific studies that have concluded that certain areas of the shoreline are eroding at an extraordinary rate. The dynamic nature of the coastal bluff line presents various challenges to the use and management of shoreline property.
- As a service to its residents, Bayfield County, with the assistance of the Wisconsin Coastal Management Program, is sponsoring this community outreach session to share recent findings with the public. The goal of this session is to communicate what is known about Lake Superior shoreline erosion, and provide information regarding governmental programs that citizens, non-profit organizations and government agencies may turn to for assistance.



Agenda

6:00 - 7:00pm

Introduction

Dave Lee, Bayfield County Land Records Department

Meeting overview, and historical background on moving to performance-based land use standards that are supported by scientifically sound principles.

Dynamics Of Erosion

Phil Keillor, University of Wisconsin Sea Grant

Discussion of factors causing bluff erosion and other types of shoreline change.

Lake Superior Bluff Recession Research

Mark Miller, Benchmark GIS

Results of study analyzing historical aerial photography to ascertain approximate bluff recession rates.

UW Lake Superior Shoreline Erosion

David Mickelson, University of Wisconsin-Madison

Presentation on research to update previous studies to determine bluff profiles, stability, parent material, type and extent of failures, and shore protection structures.



Agenda

7:00 - 8:00pm

Programs for Remedial and Proactive Actions

Alberto Vargas, Wisconsin Coastal Management Program (WCMP)

Overview of the Coastal Hazards Workgroup activities, and assistance available through WCMP.

Dave Hart, University of Wisconsin Sea Grant

Overview of resources available through Sea Grant and discussion of NOAA project to develop a dynamic and dedicated GIS to support coastal management.

Al Lulloff, Wisconsin Department of Natural Resources (WiDNR)

Discussion of available WiDNR resources, and review of current coastal regulations, codes, policies and the activities of other coastal counties

Phil Keillor, University of Wisconsin Sea Grant

Remedial and proactive actions--What can be done to fix it or to prevent it?

