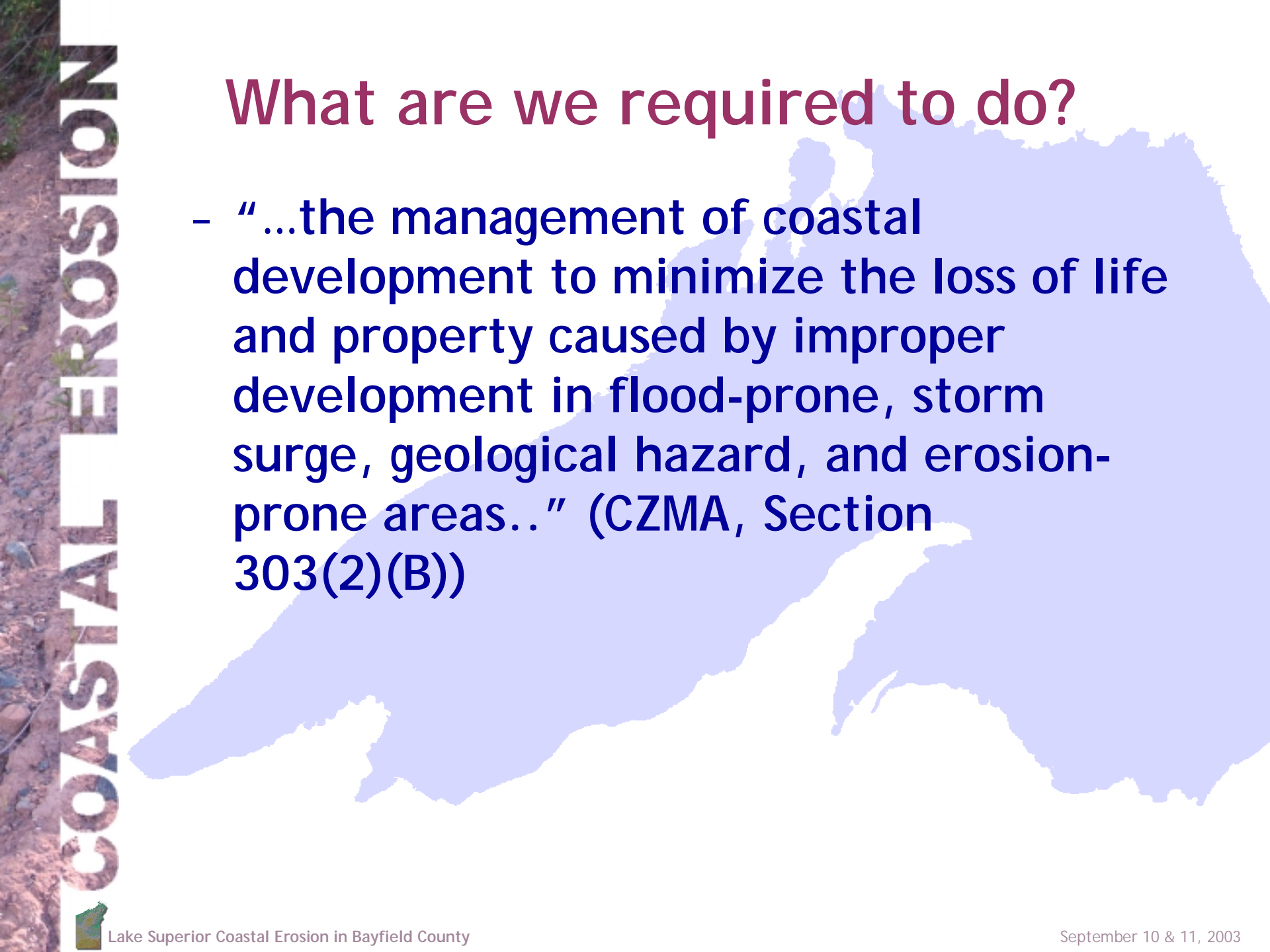


Wisconsin Coastal Management Program

Coastal Hazards Work Group

Alberto Vargas
September 2003





What are we required to do?

- "...the management of coastal development to minimize the loss of life and property caused by improper development in flood-prone, storm surge, geological hazard, and erosion-prone areas.." (CZMA, Section 303(2)(B))





What have we done - Historical Sketch

- 1974-1979 development of the Shore Erosion Plan
- 1980 Model Ordinance
- 1986-7 High Lake Levels
- 1993 to present - Coastal Hazards Work Group





What are we doing now?

- Update data to have better physical evidence for prediction
- Workshops to educate public and elected officials about the hazards
- Review current state and local ordinances
- Support in the development of Mitigation Plans





Coastal Hazards Work Group

- Wisconsin DNR
- Wisconsin Emergency Management
- UW - Sea Grant Institute and LICGF
- State Cartographer's Office
- Wisconsin Coastal Management Program
- Three regional planning commissions and local governments

