

UNOFFICIAL COPY

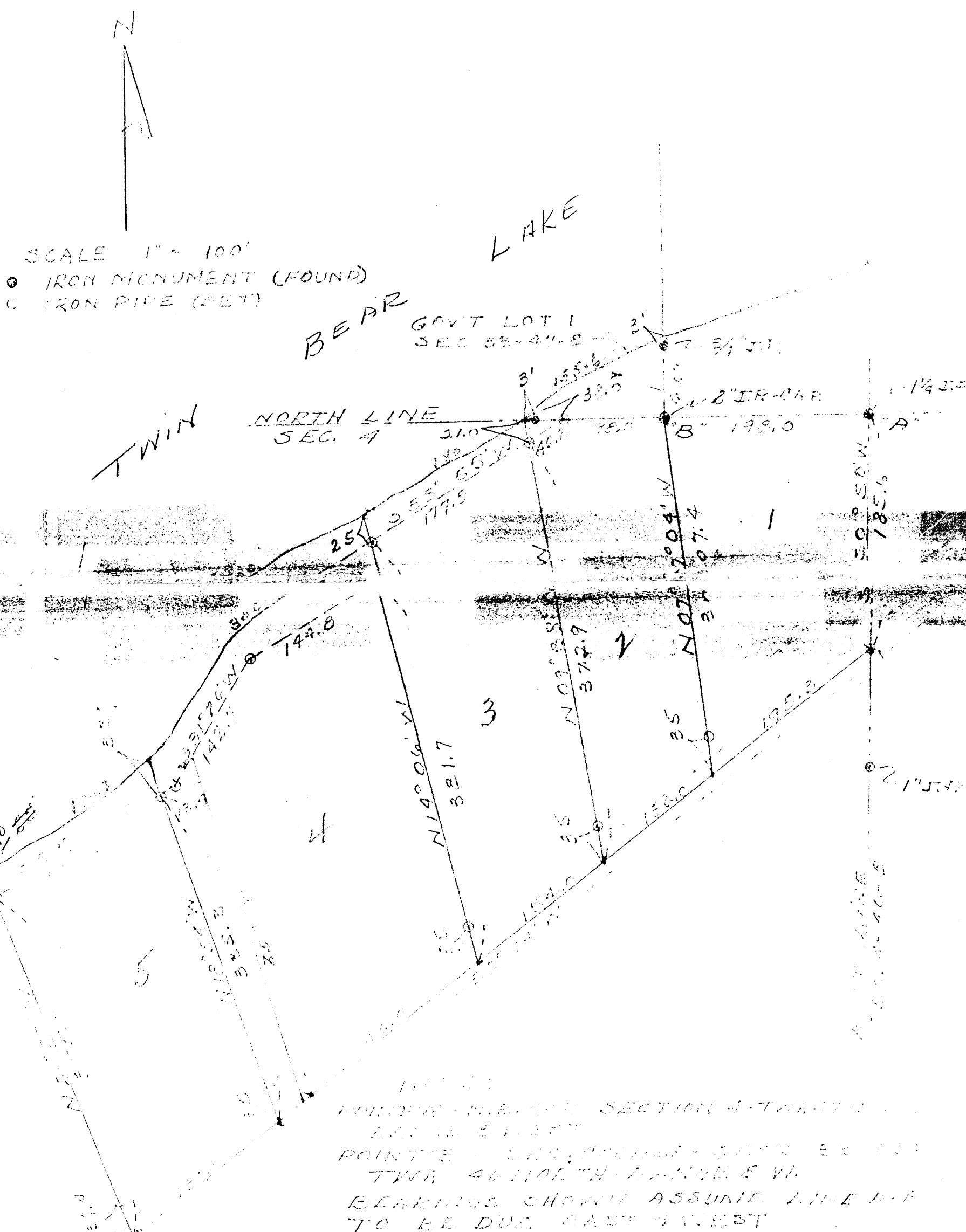
4-46-8

This document has not been recorded with the Bayfield County Register of Deeds Office.

This map is not legible in this format. Please refer to hard copy map #1017 on file in the Land Records Office.

1017

PLAT
PARCELS IN
NE 1/4 - NE 1/4 - SEC 4
TWP 46N - R. 8W



SECTION 4 - TWP 46N - R. 8W
 POINTS - SEC. 4 - TWP 46N - R. 8W
 TWP 46N - R. 8W
 BEARINGS SHOWN ASSUME LINE N-P
 TO BE DUE EAST & WEST

Kenneth Olson
 Survey July 25-1964

KENNETH OLSON
 SURVEYOR
 ROUTE 1, BOX 166 - SOUTH BAYFIELD, WIS.