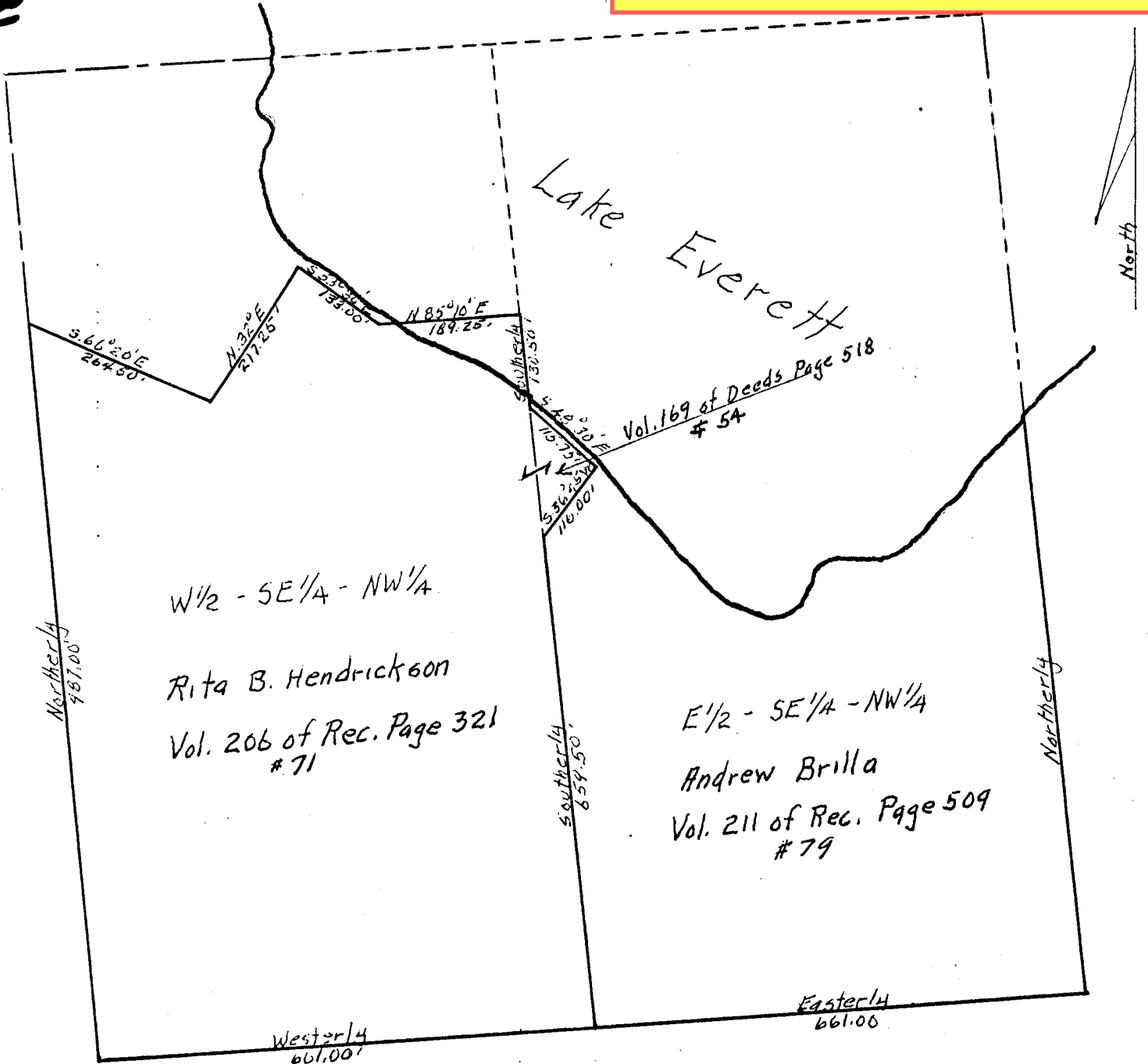


Sketch of the SE 1/4 of the NW 1/4 of Section 18
T46.N., R.7.W.

**UNOFFICIAL
COPY**

This document has not been recorded with the
Bayfield County Register of Deeds Office.

18-46-7



Scale - 1 inch = 200 feet

11/27/67

Drawn by - Randall C. O'Brien
Reg. Land Surveyor

1627