

ORIENTA

Bayfield County

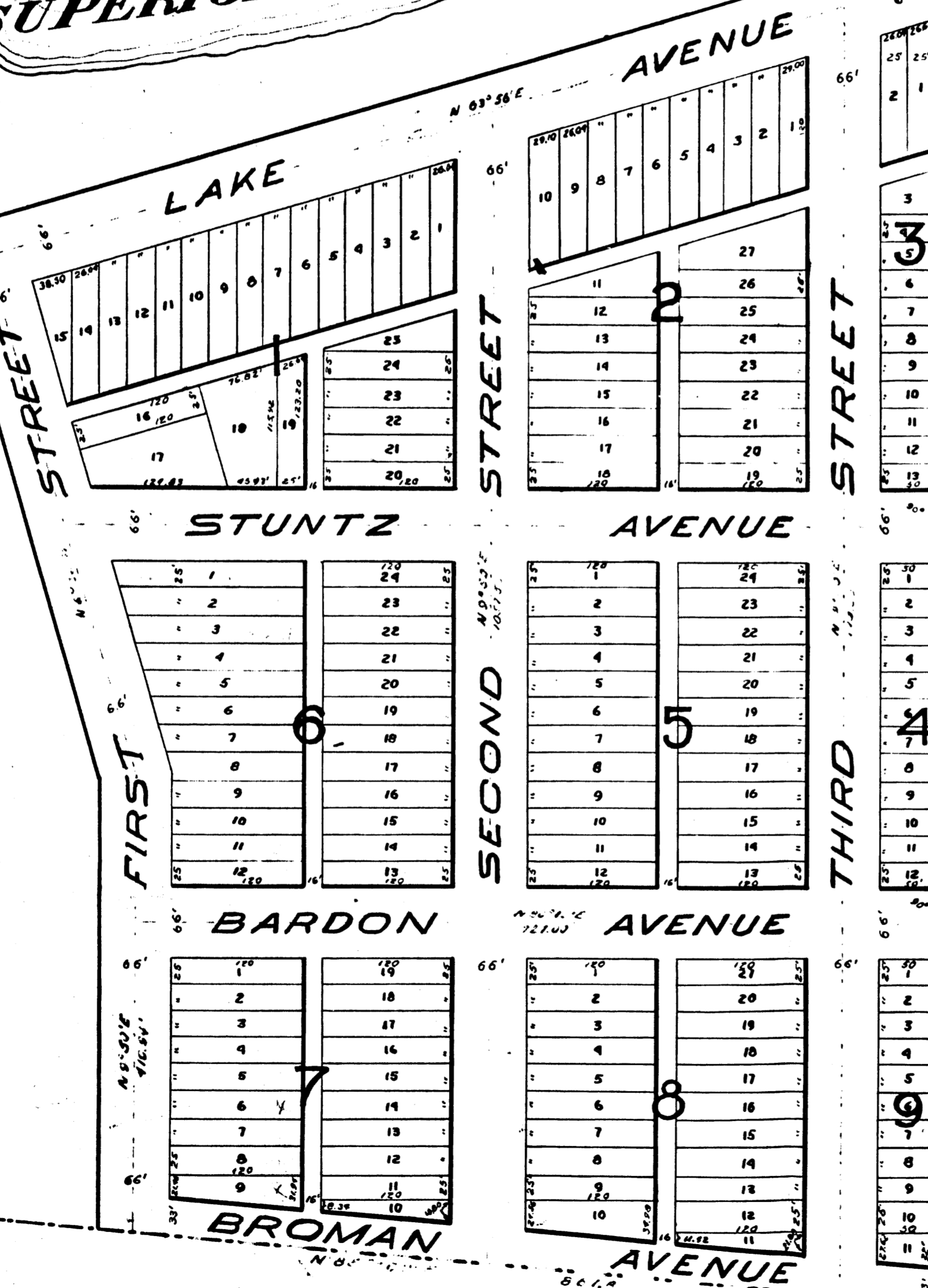
WISCONSIN

SCALE 1 INCH = 100 FEET

M. A. STRAND
SURVEYOR
SUPERIOR WISCONSIN

LAKE SUPERIOR

IRON RIVER



Orienta of which this is a plat is laid out in
 Four (4) Section Thirty four (34) Township Sift
 West Bayfield County Wisconsin according to the
 The external boundaries of the land as laid
 Beginning at the South East corner of said Lot Four (4)
 East and following the East line of said Lot Four (4)
 West to the southerly shore of Lake Superior, thence
 West to the southerly shore of said Lake Superior
 Superior to the Easterly line of Iron River thence
 and following the said Easterly line of said Iron River
 with the south line of the above mentioned Lot Four (4)
 North 85° 04' East and following said south line of said Lot Four (4)
 distance of 867.80 feet to the place of beginning.

THE exterior boundaries of the land which this plat is intended
 to represent are indicated on this plat on the south and east side by
 heavy dotted red lines whose several lengths and courses as given in red ink.
 And on the Northerly and Westerly sides by an irregular black line shaded
 blue.

The number of the Lots and Block and the width and names of
 Streets and Avenues and widths of Alleys are given in black ink All distances
 are given in feet and decimals of a foot

The base line of this survey and plat is the East line of the
 aforesaid Lot four (4) the Streets are parallel and the Avenues at right angles
 thereto except where otherwise noted on plat.

Wood monuments are indicated on the plat by a dot thus - ©
 Bearings are magnetic.

JULY 10, 1897

TRACED BY H.E.B.
 SEPT 22, 1938

UNOFFICIAL COPY
 This document has not been recorded in the
 Bayfield County Register of Deeds Office.