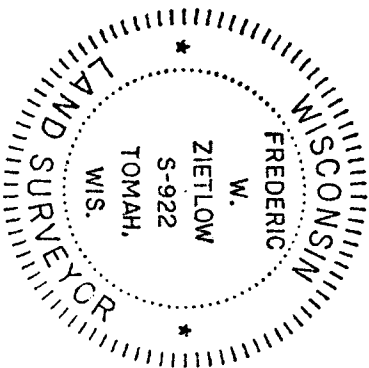
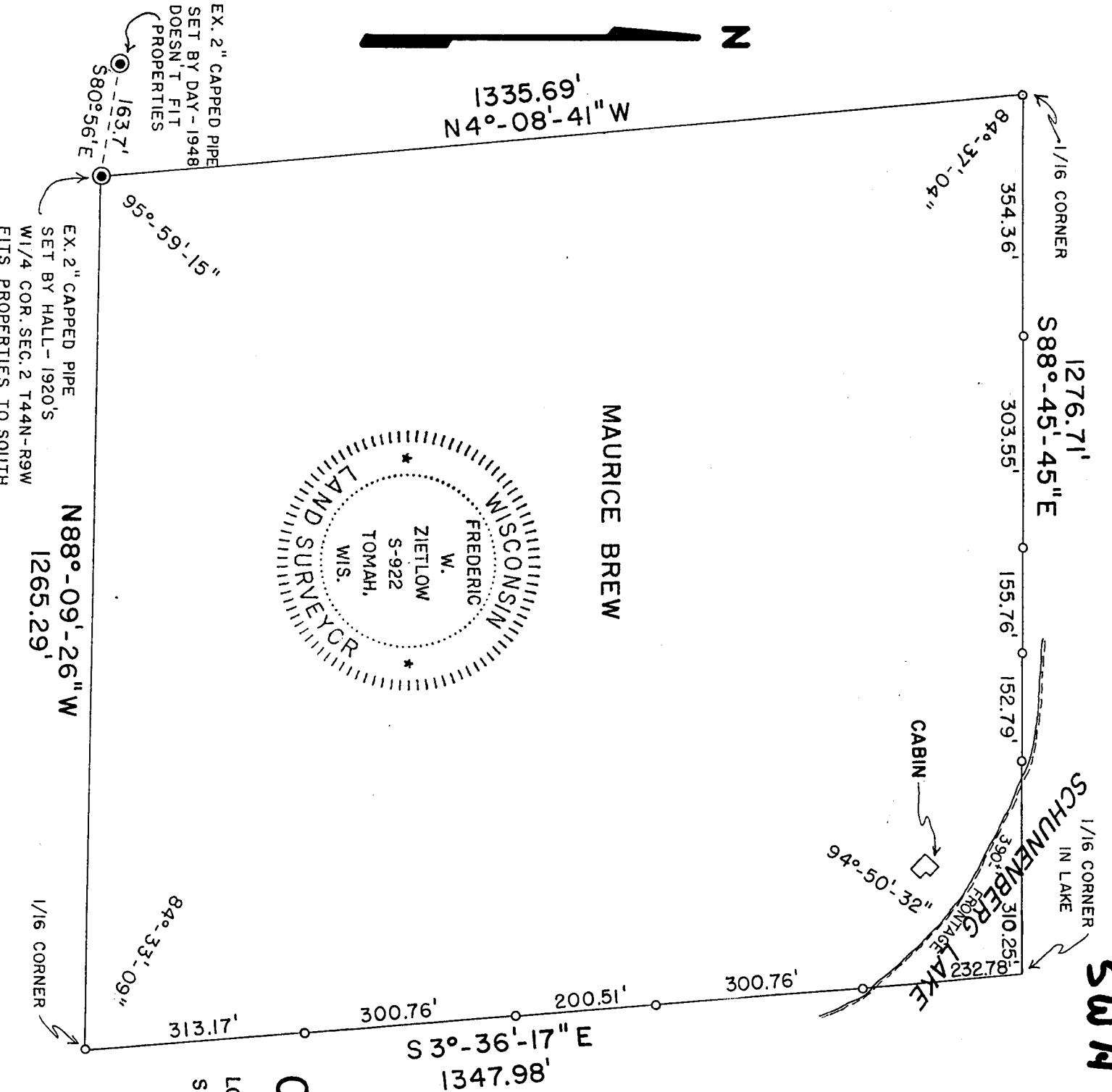


UNOFFICIAL COPY

#132

Contact the Bayfield County Register of Deeds Office to obtain an official copy of this document.



MAURICE BREW

SW 1/4 NW 1/4 2-44-9
6000089

102

SURVEYOR'S CERTIFICATE
 I, Frederic W. Zietlow, being a duly qualified Surveyor, do hereby certify that by the order and under the direction of Maurice Brew, I have surveyed and mapped the property described and the within map is the true and correct representation of the exterior boundaries of the land surveyed and that I have fully complied with the provisions of Chapter 236 of the Wisconsin Statutes to the best of my knowledge and belief.

Frederic W. Zietlow

F.W. ZIETLOW, REG. LAND SURVEYOR
 VACATIONLAND SURVEYORS, INC.
 GORDON, WISCONSIN
 289765

CERTIFIED SURVEY MAP

LOCATED IN THE SW 1/4 OF THE NW 1/4 OF SECTION 2, T44N-R9W, TOWN OF BARNES, BAYFIELD COUNTY, WISC.

LEGEND

o = SET 3/4" x 24" IRON BAR
 DATE - JUNE 27, 1973
 SCALE - 1" = 200'