

WASHBURN REAL ESTATE & INVESTMENT COMPANY'S

FIRST ADDITION

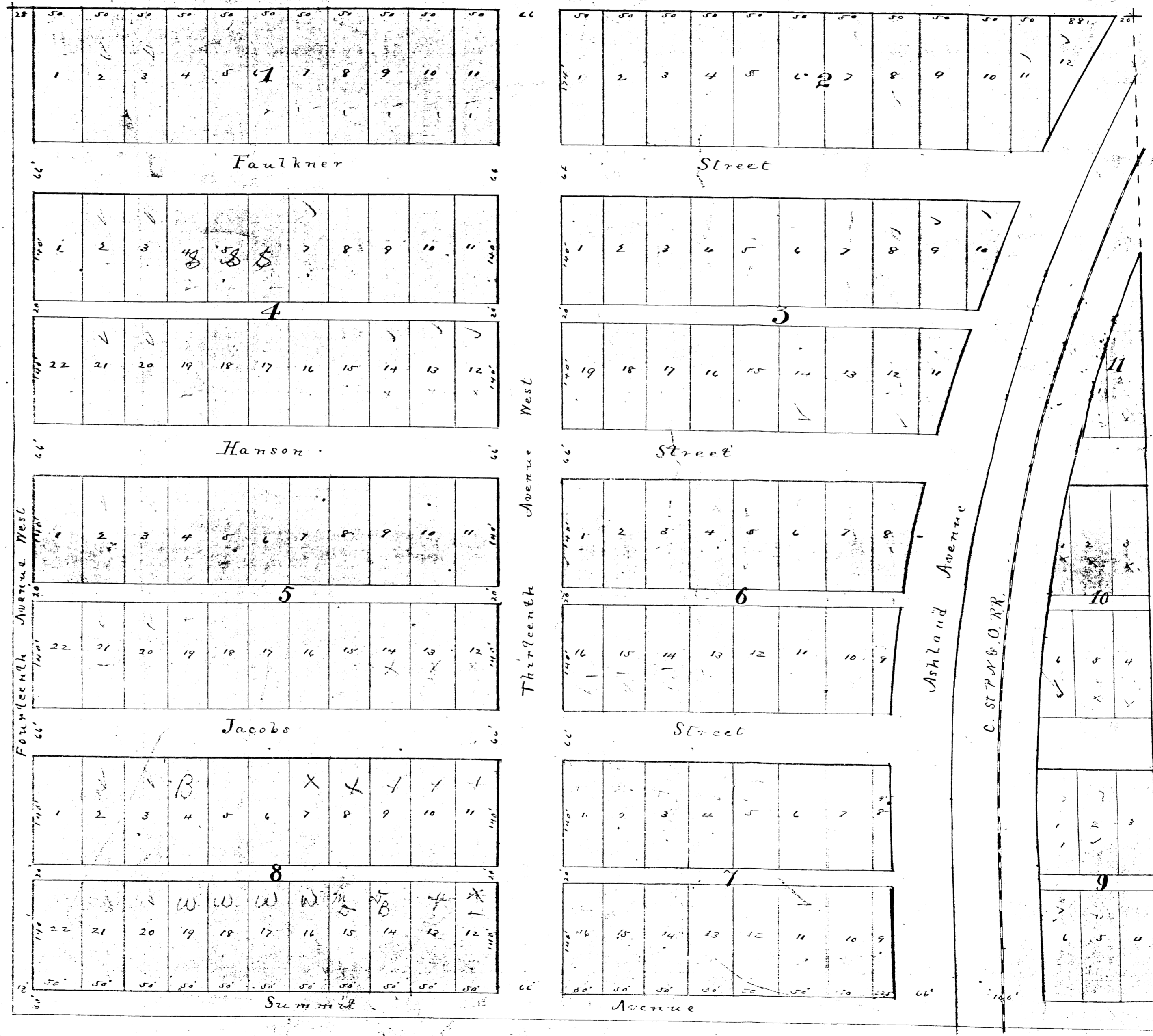
Scale 700 feet = 2 inch

to

WASHBURN.

S. J. Carpenter
Dep't of County Surveys
Bayfield County
Wisconsin

UNOFFICIAL COPY
Contact the Bayfield County Register of Deeds Office to obtain an official copy of this document.



16

1/14 Post

