

This document has not been recorded with the Bayfield County Register of Deeds Office.

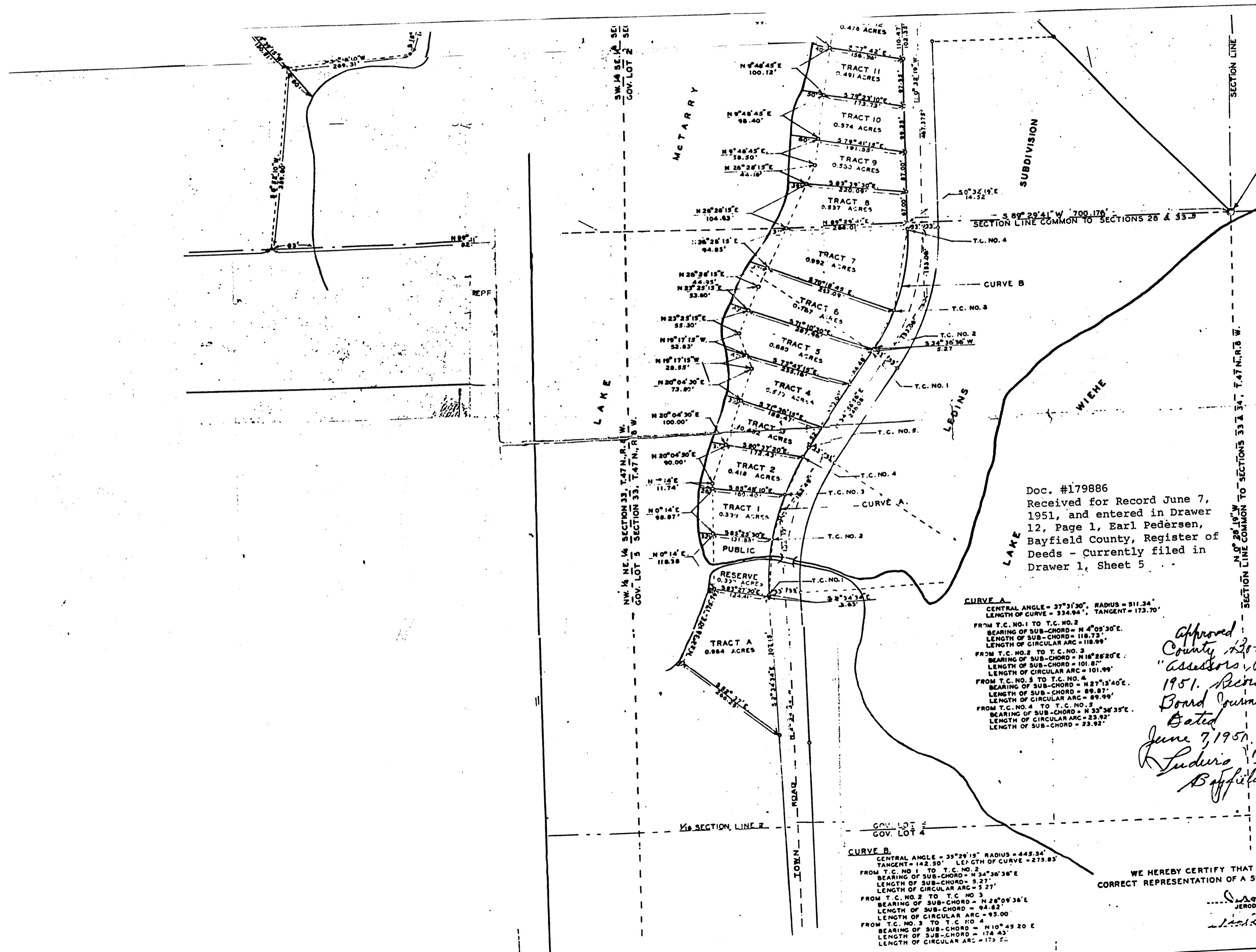
#1340

Note: Also found in files 28, 33, & 34-47-8

#1340
Note: Also found in 28-47-8 & 33-47-8 & 34-47-8

SECTION CORNER COMMON TO SECTIONS 27, 28, 33 & 34, T. 47 N., R. 8 W.

Sections 27 47-8
28 47-8
33 47-8
34 47-8



Doc. #179886
Received for Record June 7, 1951, and entered in Drawer 12, Page 1, Earl Pedersen, Bayfield County, Register of Deeds - Currently filed in Drawer 1, Sheet 5

CURVE A
CENTRAL ANGLE = 37°31'30" RADIUS = 511.34'
LENGTH OF CURVE = 334.94' TANGENT = 173.70'
FROM T.C. NO. 1 TO T.C. NO. 2
BEARING OF SUB-CHORD = N 4°05'30"E
LENGTH OF SUB-CHORD = 118.23'
LENGTH OF CIRCULAR ARC = 118.99'
FROM T.C. NO. 2 TO T.C. NO. 3
BEARING OF SUB-CHORD = N 16°28'20"E
LENGTH OF SUB-CHORD = 101.87'
LENGTH OF CIRCULAR ARC = 101.99'
FROM T.C. NO. 3 TO T.C. NO. 4
BEARING OF SUB-CHORD = N 27°13'40"E
LENGTH OF SUB-CHORD = 89.87'
LENGTH OF CIRCULAR ARC = 89.99'
FROM T.C. NO. 4 TO T.C. NO. 5
BEARING OF SUB-CHORD = N 33°36'35"E
LENGTH OF SUB-CHORD = 23.92'
LENGTH OF CIRCULAR ARC = 23.92'

CURVE B
CENTRAL ANGLE = 35°29'15" RADIUS = 445.34'
TANGENT = 142.50' LENGTH OF CURVE = 273.83'
FROM T.C. NO. 1 TO T.C. NO. 2
BEARING OF SUB-CHORD = N 34°36'36"E
LENGTH OF SUB-CHORD = 5.27'
LENGTH OF CIRCULAR ARC = 5.27'
FROM T.C. NO. 2 TO T.C. NO. 3
BEARING OF SUB-CHORD = N 28°09'36"E
LENGTH OF SUB-CHORD = 94.62'
LENGTH OF CIRCULAR ARC = 95.00'
FROM T.C. NO. 3 TO T.C. NO. 4
BEARING OF SUB-CHORD = N 10°45'20"E
LENGTH OF SUB-CHORD = 174.43'
LENGTH OF CIRCULAR ARC = 175.22'

Approved by Bayfield County Board as an "Assessors Plat" on April 17, 1951. Recorded in County Board Journal 9, page 462.
Dated June 7, 1951.
Ludwig Trautman
Bayfield County Clerk, Wis.

WE HEREBY CERTIFY THAT THE WITHIN MAP IS A CORRECT REPRESENTATION OF A SURVEY MADE BY US.

JEROD W. DAY ENGINEER
SURVEYOR