

Contact the Bayfield County Register of Deeds Office to obtain an official copy of this document.

**ADDITION No. 1 To EAST LAKE SUBDIVISION  
BAYFIELD COUNTY  
WISCONSIN**

GOVT. LOT 5 SEC. 34, T. 44N., R. 7W.  
Part GOVT. LOT 4 SEC. 3, T. 43N., R. 7W.

GOVT. LOT 5 SEC. 34  
T. 44N., R. 7W.

17  
A-16.25

Scale, 1 inch = 100 feet



I, Paul P. Young, hereby certify that I have surveyed the tracts of land shown in the annexed plat, said tracts being Govt Lot 5, S. 34, T. 44N., R. 7W., and a part of Govt Lot 4, S. 3, T. 43N., R. 7W., Bayfield County, Wis. That I have subdivided the same into lots as designated by the numbers, boundaries, courses, distances and quantities placed on said plat. That the exterior boundaries of said subdivision are as follows: Beginning at a point on the shore of East Lake, 200' South of the 1/2 sec. cor. S 34 T. 44N. R. 7W. and S. 3, T. 43N., R. 7W., thence North, 200' to 1/4 S. 34 and S, thence N. 2° 15' W., 153.2' to CS 1/4 Cor., thence S. 89° 00' E., 120.9' to the shore of East Lake, thence with the meanders of East Lake to the point of beginning. I also certify that this survey and map were made by the order and direction of Arthur Goff as owner of the property of Cable, Bayfield County, Wis. That the map is a correct representation of all the exterior boundaries of the land surveyed and of the divisions thereon made and that I have complied with the provisions of Chapter 236 of the Wisconsin Statutes of Surveying, Subdividing and Mapping the same.

Paul P. Young C.E.  
Subscribed and sworn to before me this 29th day of January 1937  
J. Belle Sweet Notary Public, Bayfield County, Wisconsin  
My commission expires March - 19 - 1939

I, Arthur Goff, owner, hereby certify that I have caused the lands described in the foregoing certificate of Paul P. Young, surveyor, to be surveyed and mapped as indicated on the within map.

Arthur Goff  
Subscribed and sworn to before me this 29th day of January 1937  
J. Belle Sweet Notary Public, Bayfield County, Wisconsin  
My commission expires March - 19 - 1939

**RESOLUTION.**  
Be it hereby resolved by the Town Board of Supervisors of the town of Drummond, Bayfield County, Wisconsin, regularly assembled this 10th day of February 1937, that the survey and plat of Addition Number One, of East Lake Subdivision as shown in the annexed plat be, and is hereby adopted and approved. I hereby certify that the above resolution was regularly adopted and approved by the Drummond Town Board of Supervisors this 10th day of February, A.D. 1937

O. A. Gleason Clerk  
Town of Drummond, Bayfield County Wis.

O. A. Gleason Clerk  
Town of Drummond, Bayfield County Wis.

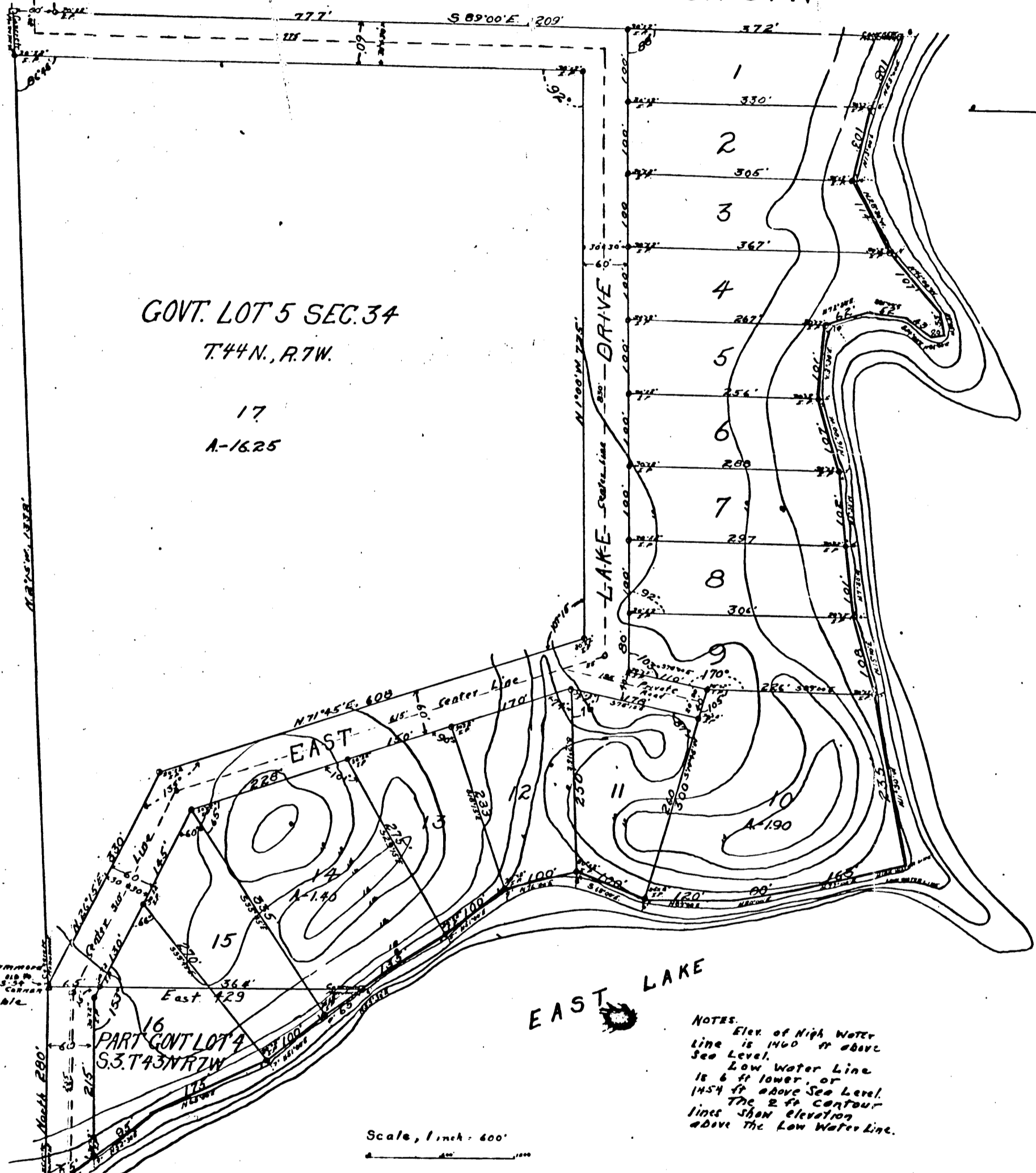
Approved by the Wisconsin State Board of Health, this 9th day of April 1937.

Frank R. Taylor  
State Domestic Sanitary Engineer.  
B. A. Hagan  
State Health Officer.

**RESOLUTION.**  
Be it hereby resolved by the Town Board of Supervisors of the Town of Cable, Bayfield County, Wisconsin, regularly assembled this 31st day of March 1937, that the survey and plat of Addition Number One of East Lake Subdivision as shown in the annexed plat be, and hereby is adopted and approved.  
I hereby certify that the above resolution was regularly adopted and approved by the Cable Town Board of Supervisors this 31st day of March 1937.

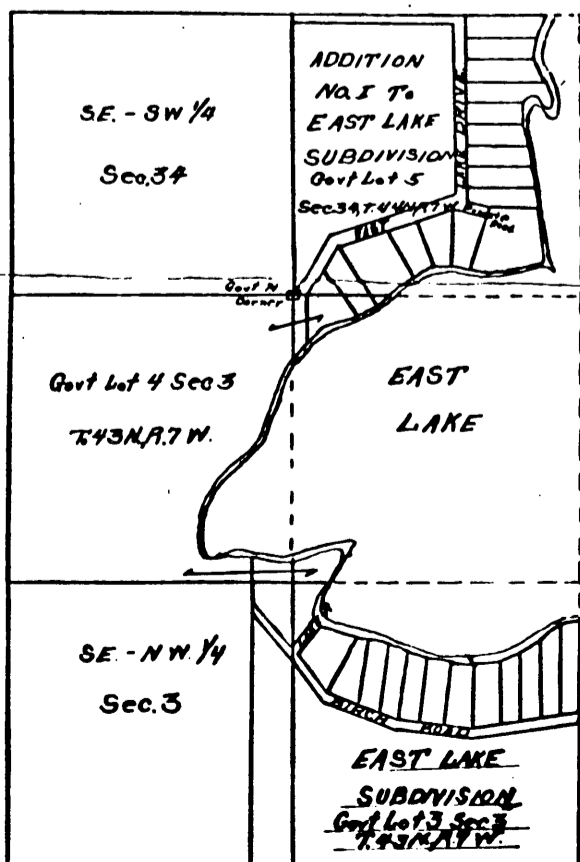
V. H. Wick Clerk  
Town of Cable,  
Bayfield County, Wis.

Approved this 5th day of April 1937  
M. W. Tortelton  
Director of Regional Planning



**NOTES.**  
Elev of High Water line is 1460 ft above Sea Level.  
Low Water Line is 6 ft lower, or 1454 ft above Sea Level.  
The 2 ft contour line shows elevation above the Low Water Line.

Scale, 1 inch = 400'



13P31