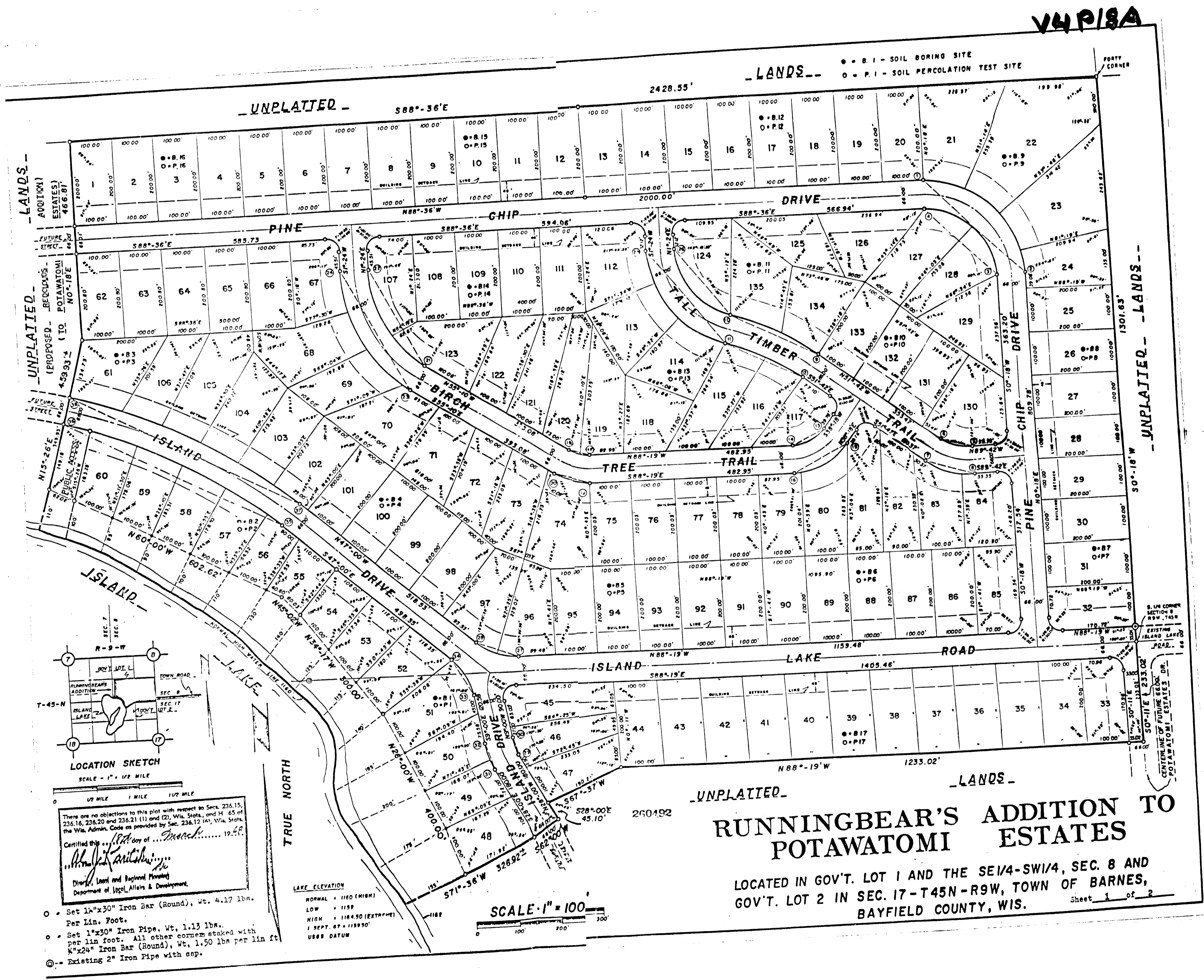


Contact the Bayfield County Register of Deeds Office to obtain an official copy of this document.



UNPLATTED - ADDITION ESTATES 466.81

UNPLATTED - RECLAMATION (PROPOSED) TO POTAWATOMI ESTATES 439.93

ISLAND

ISLAND

ISLAND

ISLAND

ISLAND

ISLAND

ISLAND

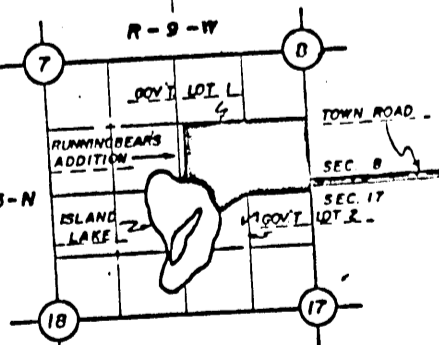
ISLAND

ISLAND

ISLAND

ISLAND

ISLAND



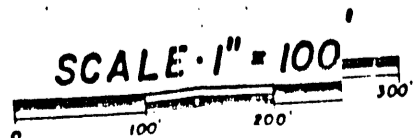
There are no objections to this plat with respect to Sects. 236.15, 236.16, 236.20 and 236.21 (1) and (2), Wis. Stats., and H. 65 of the Wis. Admin. Code as provided by Sec. 236.12 (A), Wis. Stats.

Certified this 18th day of March 1969

*Thomas J. Mitchell*  
 Director, Land and Regional Planning  
 Department of Local Affairs & Development

- - Set 1"x30" Iron Bar (Round), Wt. 4.17 lbs. Per Lin. Foot.
- - Set 1"x30" Iron Pipe, Wt. 1.13 lbs. per lin foot. All other corners staked with 4"x24" Iron Bar (Round), Wt. 1.50 lbs per lin ft
- - Existing 2" Iron Pipe with cap.

LAKE ELEVATION  
 NORMAL - 1160 (HIGH)  
 LOW - 1159  
 HIGH - 1164.90 (EXTREMELY)  
 1 SEPT. 67 - 1159.50'  
 UBB9 DATUM



**RUNNINGBEAR'S ADDITION TO POTAWATOMI ESTATES**

LOCATED IN GOV'T. LOT 1 AND THE SE 1/4-SW 1/4, SEC. 8 AND GOV'T. LOT 2 IN SEC. 17-T45N-R9W, TOWN OF BARNES, BAYFIELD COUNTY, WIS.

Contact the Bayfield County Register of Deeds Office to obtain an official copy of this document.

V4P/86

CURVE NO.	LCR NO.	RADIUS	CHORD LENGTH	CHORD BEARINGS	CENTRAL ANGLE	TANGENT BEARINGS
1-2	21	233.00'	326.34'	N44°-03'W	88°-54'	N0°-18'E
	22	233.00'	100.06'	N78°-12'W	24°-48'	N63°-48'W
	23	233.00'	100.06'	N51°-24'W	24°-48'	N39°-02'W
	24	233.00'	100.07'	N26°-36'W	24°-48'	N14°-12'W
	25	233.00'	58.81'	N6°-57'W	14°-30'	N0°-18'E
	26	167.00'	333.00'	S44°-09'E	88°-54'	S88°-36'E
	27	167.00'	120.06'	S67°-36'E	42°-36'	S88°-36'E
	28	167.00'	132.56'	S22°-03'E	42°-36'	S46°-28'E
	29	117.00'	76.18'	S70°-12'E	38°-00'	N89°-42'W
	30	183.00'	119.16'	S70°-12'E	38°-00'	S51°-42'W
	31	183.00'	89.99'	S65°-56'E	28°-28'	S60°-10'E
	32	183.00'	30.41'	S84°-58'E	9°-32'	N51°-12'W
	33	288.47'	228.43'	N62°-52'W	28°-46'	N51°-12'W
	34	288.47'	100.06'	N89°-16'W	12°-37'	N39°-02'W
	35	288.47'	202.80'	S68°-53'W	23°-00'	S74°-05'E
	36	288.47'	100.06'	S68°-53'W	23°-00'	S46°-28'E
	37	288.47'	100.06'	S68°-53'W	23°-00'	S22°-03'E
	38	288.47'	100.06'	S68°-53'W	23°-00'	S0°-18'E
	39	288.47'	100.06'	S68°-53'W	23°-00'	S14°-12'W
	40	288.47'	100.06'	S68°-53'W	23°-00'	S28°-28'E
	41	288.47'	100.06'	S68°-53'W	23°-00'	S42°-36'E
	42	288.47'	100.06'	S68°-53'W	23°-00'	S56°-44'E
	43	288.47'	100.06'	S68°-53'W	23°-00'	S70°-12'E
	44	288.47'	100.06'	S68°-53'W	23°-00'	S84°-58'E
	45	288.47'	100.06'	S68°-53'W	23°-00'	S88°-36'E
	46	288.47'	100.06'	S68°-53'W	23°-00'	S88°-36'E
	47	288.47'	100.06'	S68°-53'W	23°-00'	S88°-36'E
	48	288.47'	100.06'	S68°-53'W	23°-00'	S88°-36'E
	49	288.47'	100.06'	S68°-53'W	23°-00'	S88°-36'E
	50	288.47'	100.06'	S68°-53'W	23°-00'	S88°-36'E
	51	288.47'	100.06'	S68°-53'W	23°-00'	S88°-36'E
	52	288.47'	100.06'	S68°-53'W	23°-00'	S88°-36'E
	53	288.47'	100.06'	S68°-53'W	23°-00'	S88°-36'E
	54	288.47'	100.06'	S68°-53'W	23°-00'	S88°-36'E
	55	288.47'	100.06'	S68°-53'W	23°-00'	S88°-36'E
	56	288.47'	100.06'	S68°-53'W	23°-00'	S88°-36'E
	57	288.47'	100.06'	S68°-53'W	23°-00'	S88°-36'E
	58	288.47'	100.06'	S68°-53'W	23°-00'	S88°-36'E
	59	288.47'	100.06'	S68°-53'W	23°-00'	S88°-36'E
	60	288.47'	100.06'	S68°-53'W	23°-00'	S88°-36'E
	61	288.47'	100.06'	S68°-53'W	23°-00'	S88°-36'E
	62	288.47'	100.06'	S68°-53'W	23°-00'	S88°-36'E
	63	288.47'	100.06'	S68°-53'W	23°-00'	S88°-36'E
	64	288.47'	100.06'	S68°-53'W	23°-00'	S88°-36'E
	65	288.47'	100.06'	S68°-53'W	23°-00'	S88°-36'E
	66	288.47'	100.06'	S68°-53'W	23°-00'	S88°-36'E
	67	288.47'	100.06'	S68°-53'W	23°-00'	S88°-36'E
	68	288.47'	100.06'	S68°-53'W	23°-00'	S88°-36'E
	69	288.47'	100.06'	S68°-53'W	23°-00'	S88°-36'E
	70	288.47'	100.06'	S68°-53'W	23°-00'	S88°-36'E
	71	288.47'	100.06'	S68°-53'W	23°-00'	S88°-36'E
	72	288.47'	100.06'	S68°-53'W	23°-00'	S88°-36'E
	73	288.47'	100.06'	S68°-53'W	23°-00'	S88°-36'E
	74	288.47'	100.06'	S68°-53'W	23°-00'	S88°-36'E
	75	288.47'	100.06'	S68°-53'W	23°-00'	S88°-36'E
	76	288.47'	100.06'	S68°-53'W	23°-00'	S88°-36'E
	77	288.47'	100.06'	S68°-53'W	23°-00'	S88°-36'E
	78	288.47'	100.06'	S68°-53'W	23°-00'	S88°-36'E
	79	288.47'	100.06'	S68°-53'W	23°-00'	S88°-36'E
	80	288.47'	100.06'	S68°-53'W	23°-00'	S88°-36'E
	81	288.47'	100.06'	S68°-53'W	23°-00'	S88°-36'E
	82	288.47'	100.06'	S68°-53'W	23°-00'	S88°-36'E
	83	288.47'	100.06'	S68°-53'W	23°-00'	S88°-36'E
	84	288.47'	100.06'	S68°-53'W	23°-00'	S88°-36'E
	85	288.47'	100.06'	S68°-53'W	23°-00'	S88°-36'E
	86	288.47'	100.06'	S68°-53'W	23°-00'	S88°-36'E
	87	288.47'	100.06'	S68°-53'W	23°-00'	S88°-36'E
	88	288.47'	100.06'	S68°-53'W	23°-00'	S88°-36'E
	89	288.47'	100.06'	S68°-53'W	23°-00'	S88°-36'E
	90	288.47'	100.06'	S68°-53'W	23°-00'	S88°-36'E
	91	288.47'	100.06'	S68°-53'W	23°-00'	S88°-36'E
	92	288.47'	100.06'	S68°-53'W	23°-00'	S88°-36'E
	93	288.47'	100.06'	S68°-53'W	23°-00'	S88°-36'E
	94	288.47'	100.06'	S68°-53'W	23°-00'	S88°-36'E
	95	288.47'	100.06'	S68°-53'W	23°-00'	S88°-36'E
	96	288.47'	100.06'	S68°-53'W	23°-00'	S88°-36'E
	97	288.47'	100.06'	S68°-53'W	23°-00'	S88°-36'E
	98	288.47'	100.06'	S68°-53'W	23°-00'	S88°-36'E
	99	288.47'	100.06'	S68°-53'W	23°-00'	S88°-36'E
	100	288.47'	100.06'	S68°-53'W	23°-00'	S88°-36'E

**SURVEYOR'S CERTIFICATE**

I, Donald L. Mulock, Registered Land Surveyor, hereby certify, that I have surveyed, divided, and mapped RUNNINGBEAR'S ADDITION TO POTAWATOMI ESTATES, located in Gov't. Lot 1 and the SE 1/4 of the SW 1/4, Sec. 8 and Gov't. Lot 2 in Sec. 17-T45N-R9W, Town of Barnes, Bayfield County, Wisconsin; That I have made such survey, land division and plat by the order and under the direction of JUNEAU LAND COMPANY, INC., a Wisconsin corporation, of said land, to-wit:

Beginning at the SE corner of the SE 1/4 of the SW 1/4 of said Sec. 8; thence S6°-11'E along the centerline of Potawatomi Estates Drive, 233.02 feet; thence N86°-19'W, 1235.02 feet; thence S67°-37'W, 190.21 feet; thence S28°-00'E, 45.10 feet; thence S62°-0'W, 66.00 feet; thence S71°-36'W, 171.92 feet to a point on a meander line; thence N26°-00'W along said meander line, 400.00 feet; thence N34°-17'W along said meander line, 300.00 feet; thence N45°-02'W along said meander line 60.03 feet; thence N26°-00'W along said meander line, 400.00 feet; thence N34°-17'W along said meander line, 300.00 feet; thence N45°-02'W along said meander line 60.03 feet; thence N60°-00'W along said meander line, 602.62 feet; thence N15°-26'E, 349.93 feet; thence N0°-18'E, 466.81 feet; thence S88°-36'E, 2428.55 feet to the East line of the SE 1/4 of the SW 1/4 of Sec. 8; thence S0°-18'W along said East line 1301.63 feet to the point of beginning; including all lands lying between the meander lines shown and the waters edge of Inland Lake.

That such plat is a correct representation of all the exterior boundaries of the land surveyed and the subdivision thereof made.

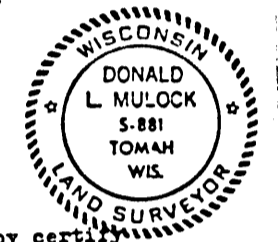
That I have fully complied with the provisions of Chapter 236 of the Wisconsin Statutes and the subdivision regulations of the Town of Barnes in surveying, dividing and mapping the same.

Subscribed and sworn to me this 14 day of February, 1968.

Donald L. Mulock  
Registered Land Surveyor  
Bayfield County, Wisconsin

DATED 2-14-68

\*Revised this 21st day of March, 1968.



**CORPORATE OWNER'S CERTIFICATE**

JUNEAU LAND COMPANY, INC., a corporation duly organized and existing under and by virtue of the laws of the State of Wisconsin, as owner, does hereby certify that said corporation caused the land described on this plat to be surveyed, divided, mapped and dedicated as represented on this plat.

JUNEAU LAND COMPANY, INC., does further certify that this plat is required by s. 236.10 or s. 236.12 to be submitted to the following for approval or objection: Division of Health, Department of Health and Social Services, Director, Local and Regional Planning, Department of Local Affairs and Development, and the Barnes Town Board.

IN WITNESS WHEREOF, the said JUNEAU LAND COMPANY, INC., has caused these presents to be signed by Michael P. Nordstrom, its President, and countersigned by Robert Mickey, its secretary, at Minneapolis, Minnesota, and its corporate seal to be hereunto affixed on this 14 day of February, 1968.

In presence of: Robert Mickey, Secretary

Personally came before me this 6 day of February, 1968, Michael P. Nordstrom, President and Robert Mickey, Secretary, of the above named Corporation to be known to be the persons who executed the foregoing instrument, and to me known to be such President and Secretary of said Corporation, and acknowledged that they executed the foregoing instrument as such officers as the deed of said corporation, by its authority.

Robert Mickey  
Secretary

**TOWN TREASURER'S CERTIFICATE**

STATE OF WISCONSIN)  
SS  
BAYFIELD COUNTY

I, Ann Champion, being the duly elected, qualified and acting Town Treasurer of the Town of Barnes, do hereby certify that in accordance with the records in my office, there are no unpaid taxes or special assessments as of April 8, 1968, on any of the land included in the plat of RUNNINGBEAR'S ADDITION TO POTAWATOMI ESTATES.

DATED April 8, 1968

Ann Champion  
Town Treasurer

**TOWN BOARD RESOLUTION**

Resolved, that the plat of RUNNINGBEAR'S ADDITION TO POTAWATOMI ESTATES, in the Town of Barnes, Juneau Land Company, Inc., owner, is hereby approved by the Town Board on April 8-1968.

Approved: Robert Mickey  
Town Clerk

I hereby certify that the foregoing is a copy of a resolution adopted by the Town Board of the Town of Barnes.

Jean Barker  
Jean Barker

**APPROVAL OF THE COUNTY ZONING COMMITTEE**

This plat approved this 9 day of April, 1968

William A. Stewart  
Chairman, County Zoning Committee

**RUNNINGBEAR'S ADDITION TO POTAWATOMI ESTATES**

There are no objections to this plat with respect to Secs. 236.10, 236.11, 236.12, 236.13, 236.14, 236.15, 236.16, 236.17, 236.18, 236.19, 236.20 and 236.21 (1) and (2) of the Wisconsin Statutes, Code as provided by Sec. 236.17 (1), Wis. Stat.

Certified this 14th day of February, 1968

W. J. Kartak  
Director of Local and Regional Planning  
Department of Local Affairs & Development

PT 5  
PT 1 28-1-2014 280 11-42-d  
260 8-42-d