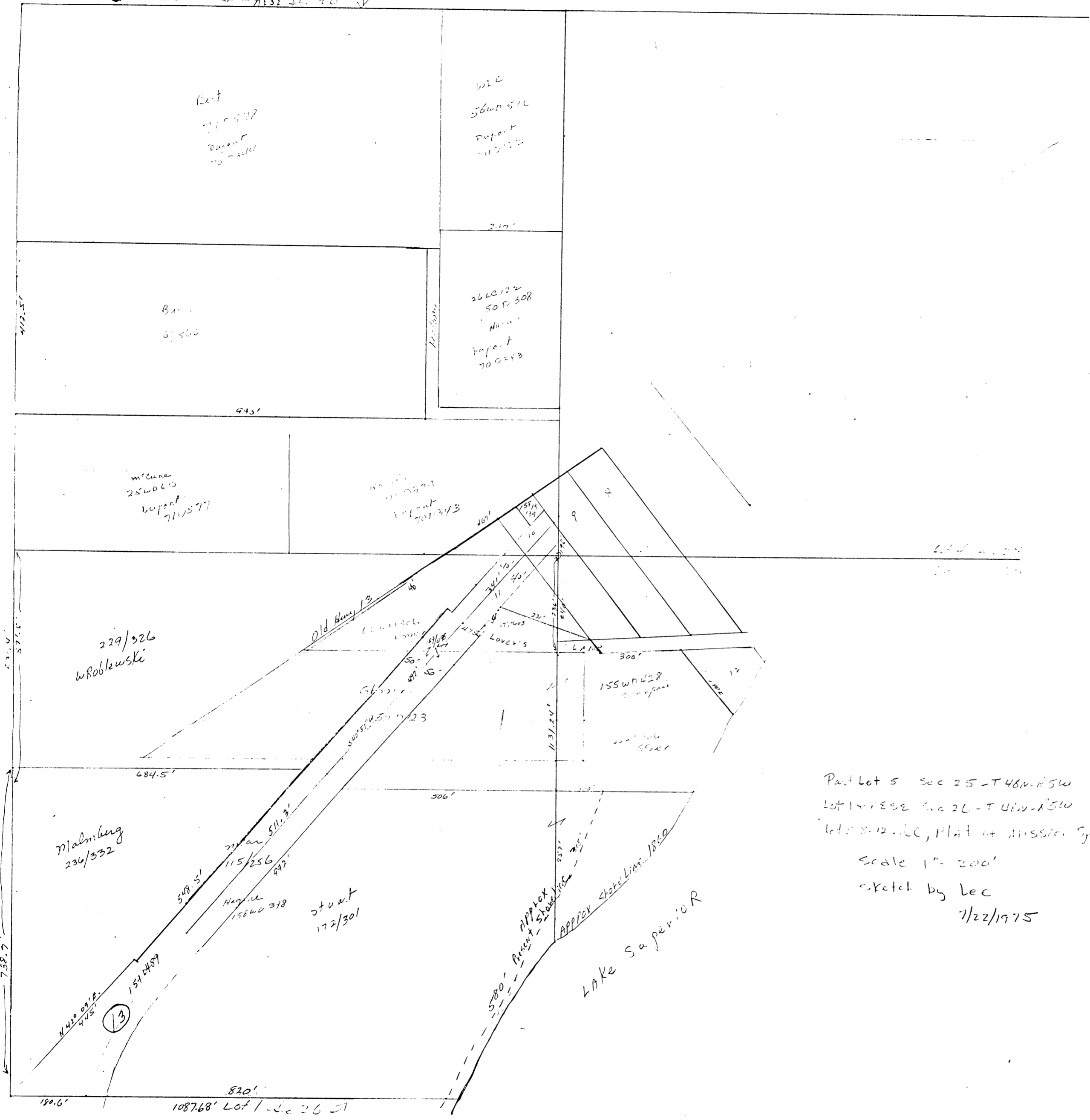


2-54-2

UNOFFICIAL COPY
This document has not been recorded with the Bayfield County Register of Deeds Office.



Part Lot 5 Sec 25 - T48N R5W
 Lot 14 - ESE Sec 26 - T48N R5W
 Lot 8 - 12 - SEC, Plat of Mission Spri.
 Scale 1" = 200'
 sketch by Lec
 7/22/1975