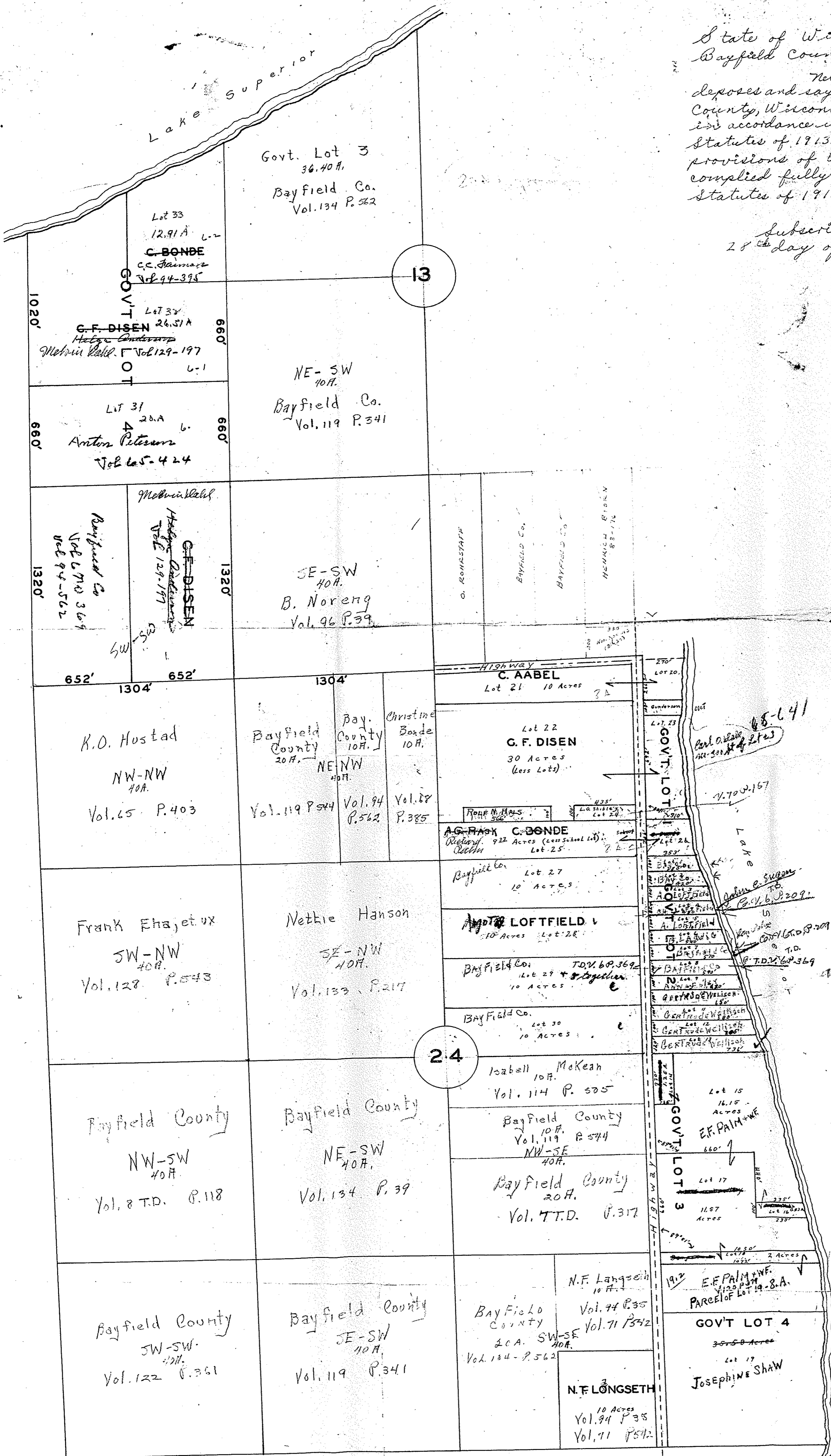


State of Wisconsin ss
Bayfield County ss

Nels M. Oscar, being first duly sworn, deposes and says, that he is the County Clerk of Bayfield County, Wisconsin. That he caused this plat to be made in accordance with the provisions of section 1047 a, Statutes of 1913. That he has complied with all the provisions of the said section, and has also complied fully with section 2288 and 2289 Statutes of 1913.

Nels M. Oscar, County Clerk
Subscribed and sworn to before me this
28th day of July, 1915.

Geo. A. Calder
Municipal Judge



SAND ISLAND
PLAT SHOWING

Sec. 13 and 24 - T-52-R-5-W
Subdivisions as called for by
deeds on record at County
Court House and conveyed
by name to the order of the
County Clerk. It is hereby
set aside as a public
trust.

W. W. Smith
County Surveyor



13-52-5
24-52-5

#1908