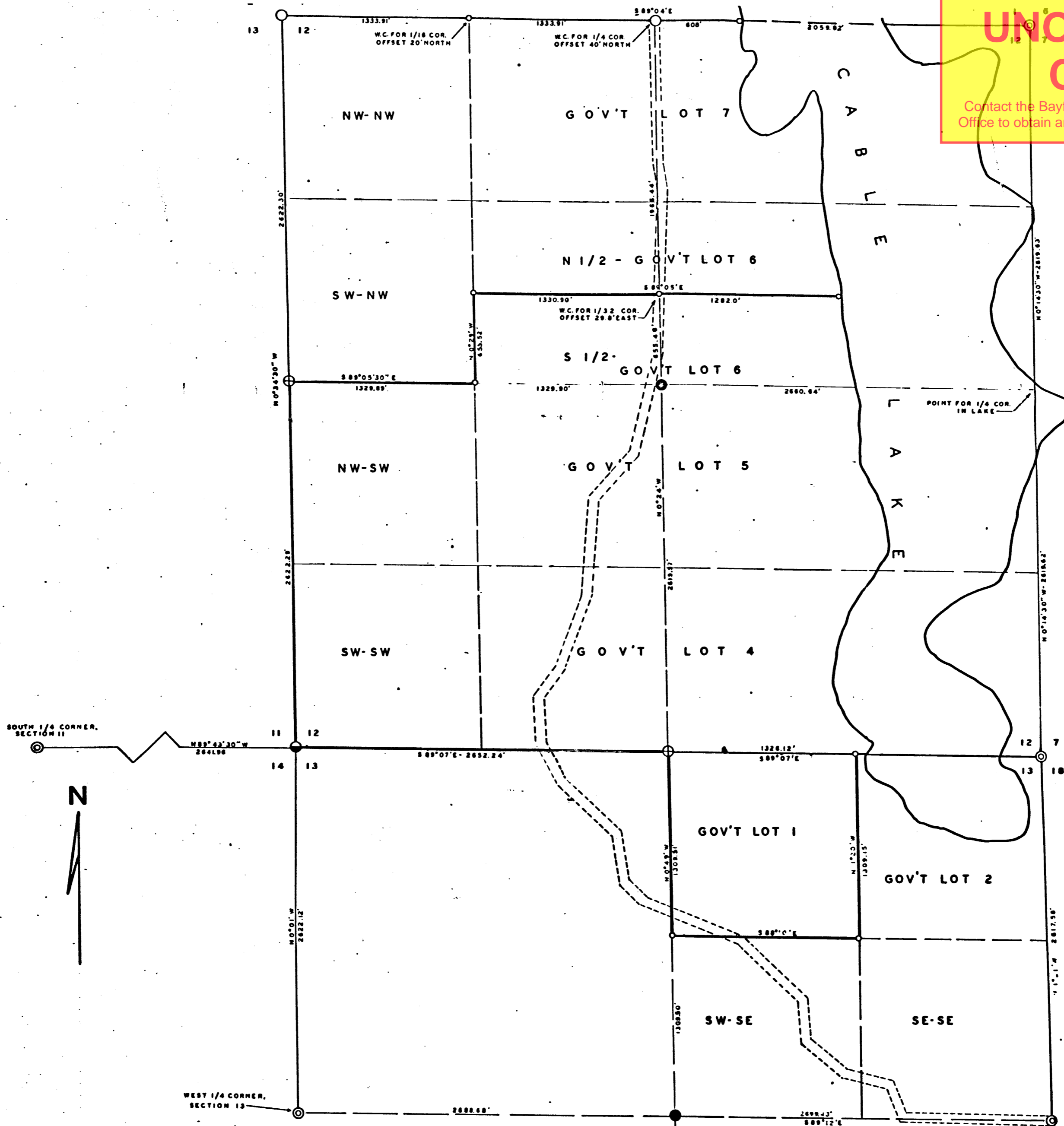


**UNOFFICIAL COPY**

Contact the Bayfield County Register of Deeds Office to obtain an official copy of this document.



**PLAT OF SURVEY:**

**SURVEY & SUBDIVISION OF SECTIONS 12 & 13, T43N, R8W, BAYFIELD CO., WIS.**

TO DELINEATE THE LINES OF THE FOLLOWING PARCELS:

- GOV'T LOT 4, SECTION 12
- GOV'T LOT 5, " 12
- THE SOUTH 1/2 OF GOV'T LOT 6, SECTION 12
- THE NW-SW & SW-SW, SECTION 12
- GOV'T LOT, SECTION 13

**AFFIDAVIT**

I HEREBY CERTIFY THAT I HAVE SURVEYED THE EXTERIOR & INTERIOR LINES OF SECTIONS 12 & 13, T43N, R8W, BAYFIELD CO., WIS., AS SHOWN ON THIS PLAT. THAT I HAVE FULLY COMPLIED WITH THE STATUTES OF THE STATE OF WISCONSIN & THE U.S. BUREAU OF LAND MANAGEMENT, AND THAT THIS PLAT IS A TRUE & ACCURATE REPRESENTATION OF SAID SURVEY.

*Thomas W. Nelson*  
THOMAS W. NELSON  
BAYFIELD CO. SURVEYOR  
WIS. REG. NO. 9-263

**LEGEND**

- ⊕ CORNER ESTABLISHED ON PREVIOUS SURVEY.
  - ⊙ " " BY SINGLE PROPORTION.
  - ⊗ " " DOUBLE " "
  - ⊙ CORNER FOUND & REMONUMENTED.
  - CENTER 1/4 SET AT INTERSECTION OF STRAIGHT LINES BETWEEN OPPOSITE 1/4 CORNERS.
- ALL THE ABOVE CORNERS ARE STANDARD 2" BAYFIELD CO. MONUMENTS, STAMPED TO IDENTIFY THE CORNER.  
○ 1" X 36" IRON PIPE  
BEARINGS ARE TRUE, BASED ON SOLAR OBSERVATIONS.

SCALE - 1 INCH = 400 FEET

MARCH 6, 1963

225400

200-15412-43-8

448/3