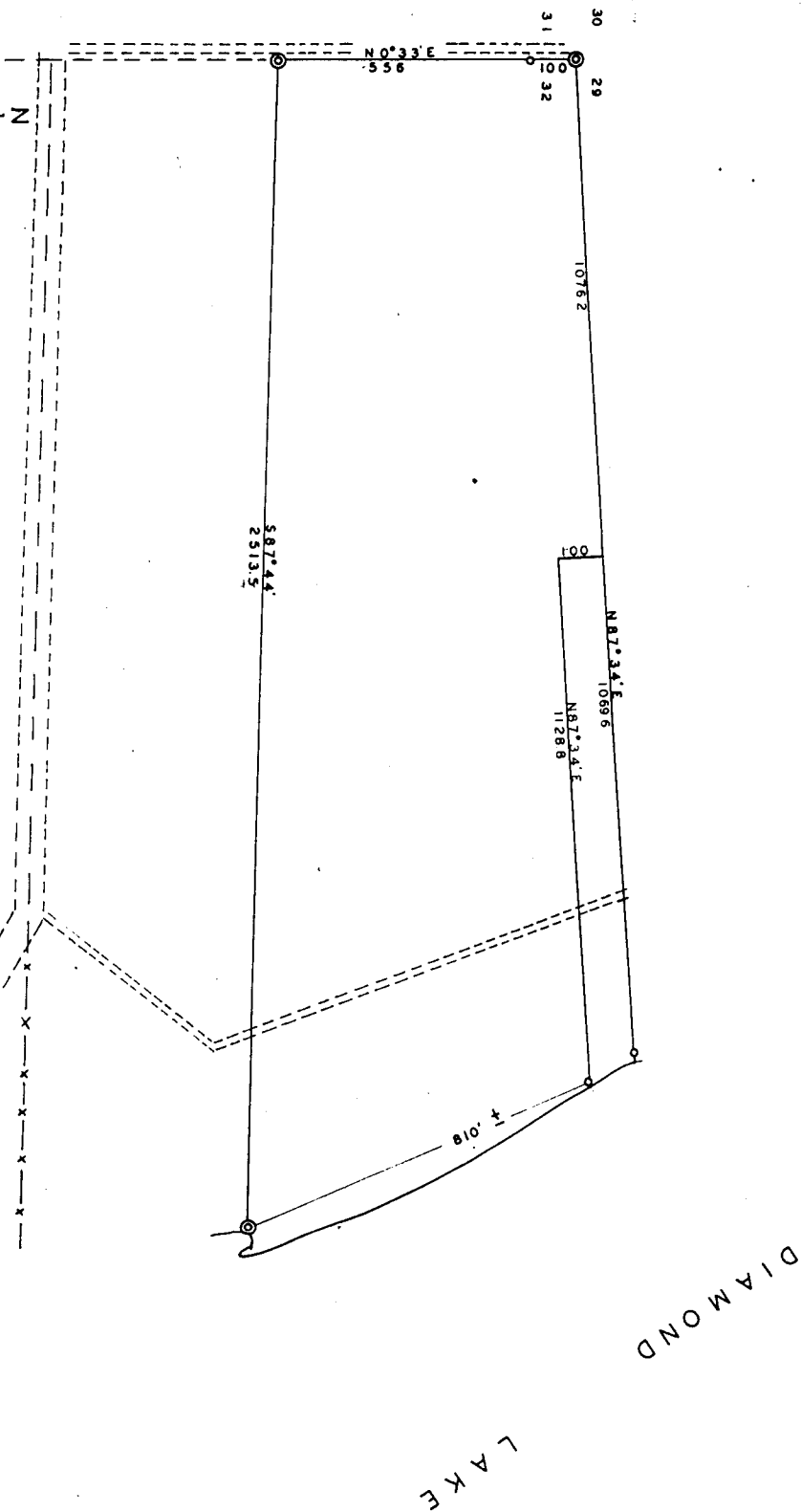


UNOFFICIAL COPY

Contact the Bayfield County Register of Deeds Office to obtain an official copy of this document.

PART OF:
GOV'T LOT 1, SEC 32, T 44N, R 6 W
BAYFIELD CO., WIS



LEGEND

- CORNER FOUND & ACCEPTED
- IRON PIPE SET
- 887.44' E TRUE BEARING
- 2153.5 " DISTANCE
- SCALE 1 INCH = 200 FEET
- OCTOBER 17, 1958.
- REVISED NOV. 3, 1958

CERTIFICATE:

I HEREBY CERTIFY THAT I HAVE MADE A SURVEY OF THE FOLLOWING DESCRIBED PROPERTY, & THAT THIS MAP IS A TRUE & ACCURATE REPRESENTATION OF THAT SURVEY.
" ALL OF GOV'T LOT 1, SEC. 32, T44N, R6W, BAYFIELD CO., WIS. EXCEPT THE NORTH 100 FEET AND THE SOUTH 500 FEET."

Thomas W. Nelson
THOMAS W. NELSON
BAYFIELD CO. SURVEYOR



61.1 32-44-6