

**UNOFFICIAL
COPY**

This document has not been recorded with the
Bayfield County Register of Deeds Office

MAR 17 1971

Edward A. Bay
COUNTY CLERK

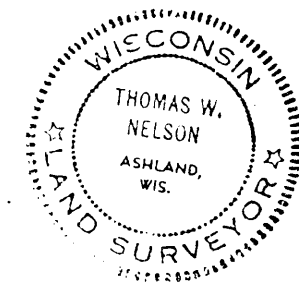
MAP OF SURVEY

PARCELS OF LAND IN SECTION 35, T. 51 N., R. 7 W., &
SECTION 2, T. 50 N., R. 7 W., BAYFIELD CO., WISCONSIN.

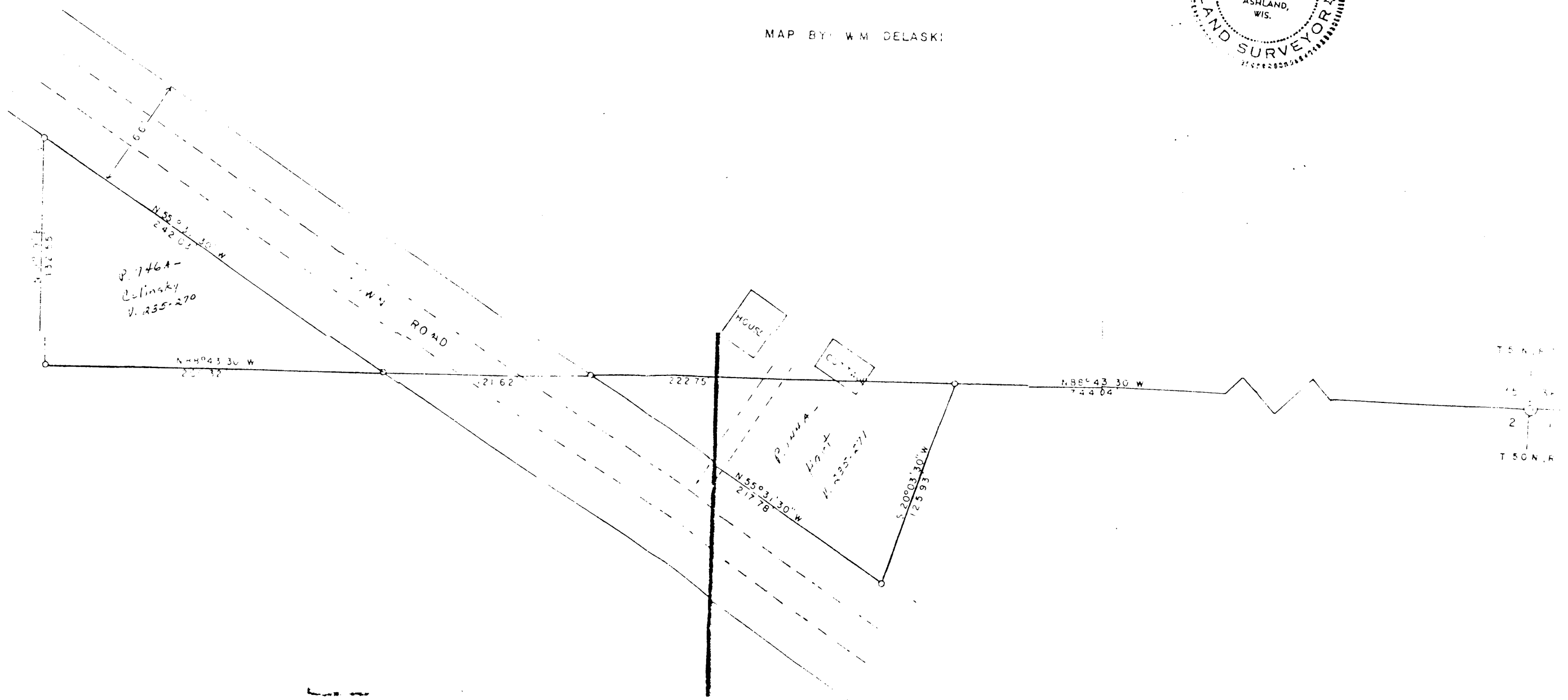
LEGEND

- IRON PIPE SET THIS SURVEY
 - ⊙ WOODEN POST FOUND IN PLACE
- BEARINGS ARE TRUE, BASED ON SOLAR OBSERVATION
SCALE: ONE INCH = 50 FEET
APRIL 20, 1970

SURVEY BY *Thomas W. Nelson*
THOMAS W. NELSON
WIS REG NO. S-263



MAP BY: W.M. DELASKI



35.51.7
2.50.7

#2008
Note: Also bound in
file 35.51.7
N