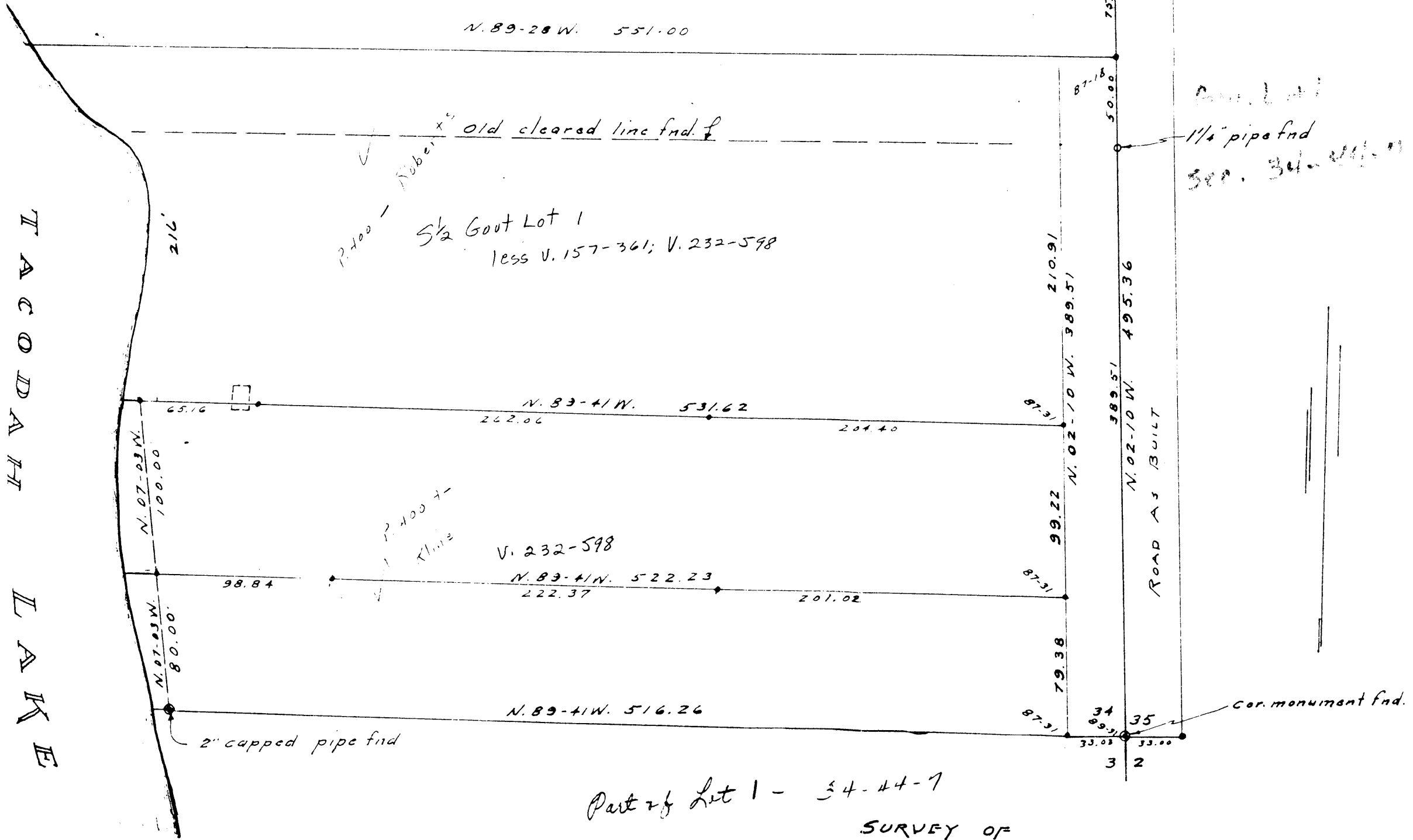




UNOFFICIAL COPY
This document has not been recorded with the Bayfield County Register of Deeds Office.

2037



Part of Lot 1 - 34-44-7
SURVEY OF
PART OF SECTION 34, T. 44N., R. 7W.
TOWN OF DRUMMOND, BAYFIELD COUNTY
scale - 1" = 50'

GC 1
34.44.7