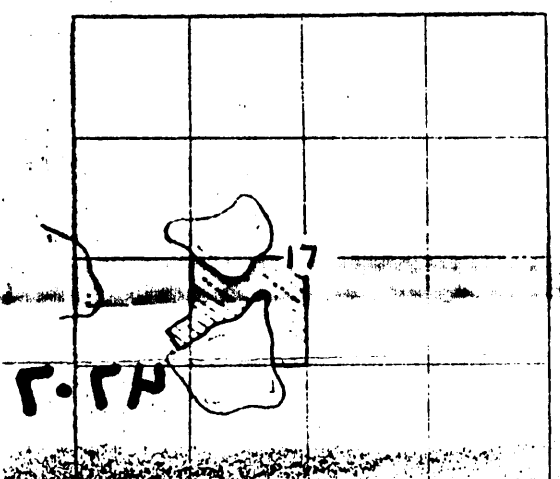
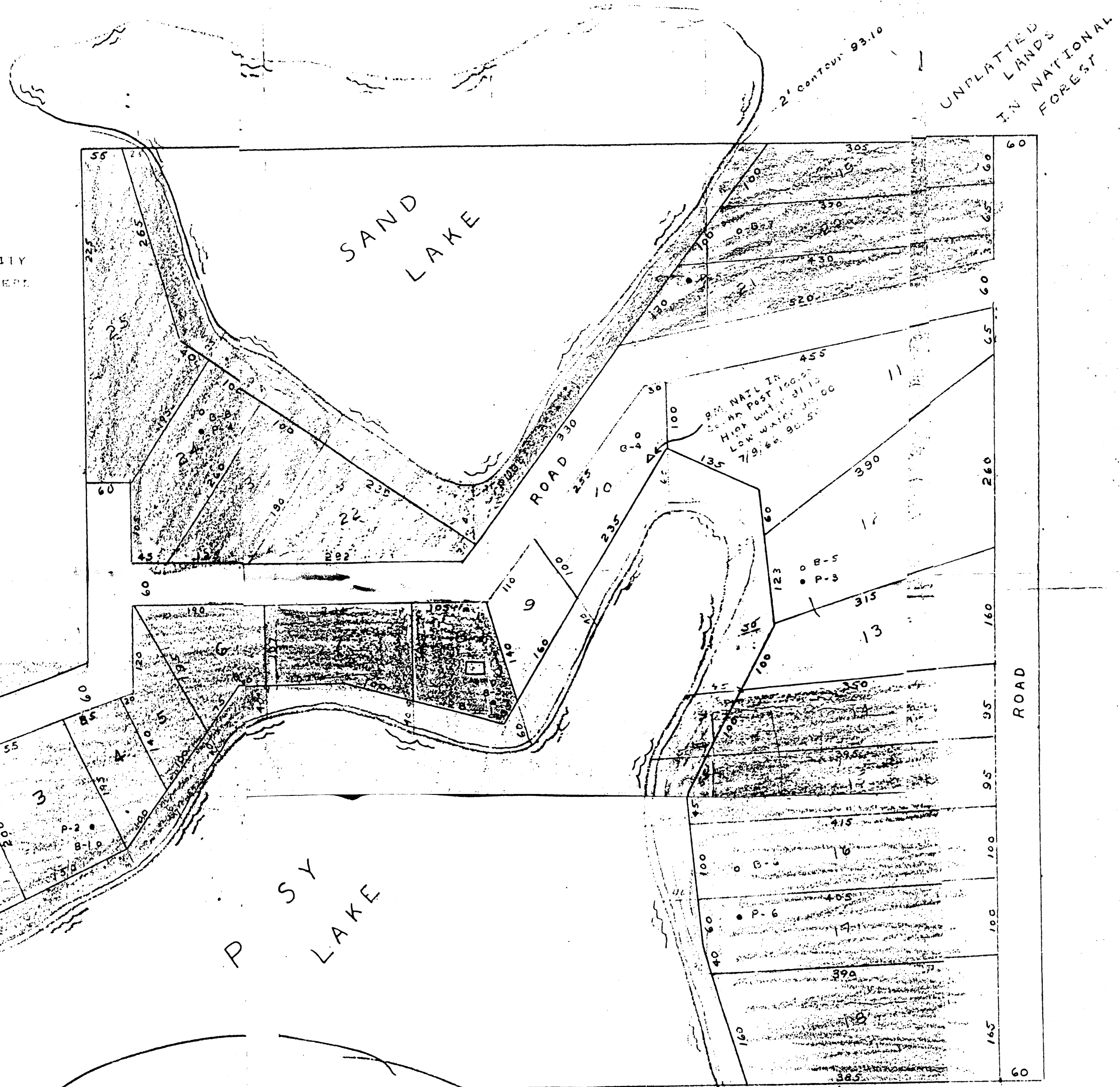


**PATSY LAKE
SUBDIVISION**

ED IN THE N¹/₂-SW¹/₄ SEC. 17, T. 47N, R. 7W, TOWN OF
N, BAYFIELD COUNTY, WISCONSIN
RS: ART SCHMIDT, PARK FALLS, WISCONSIN
ARNOLD LEDIN, MELLEN, WISCONSIN
YED BY: ART SCHMIDT R.L.S. DATE SURVEYED: 7/9/66

1 SOIL BORING O P-1 PERCOLATION TEST
SCALE: 1 INCH EQUALS 100 FEET

AGENCIES HAVING AUTHORITY TO OBJECT:
DIRECTOR PLANNING DIVISION, DEPT. OF RESOURCE DEVELOPMENT
STATE BOARD OF HEALTH



1261.85
UNPLATTED

GREEN - ARTHUR BORCK
BLUE - JOHN D. SELLUNG, LANGREN
BROWN - WALLIS RADFORD
YELLOW - T. K.
RED - DARRELL

UNPLATTED LANDS
IN NATIONAL FOREST

2' contour 93.10