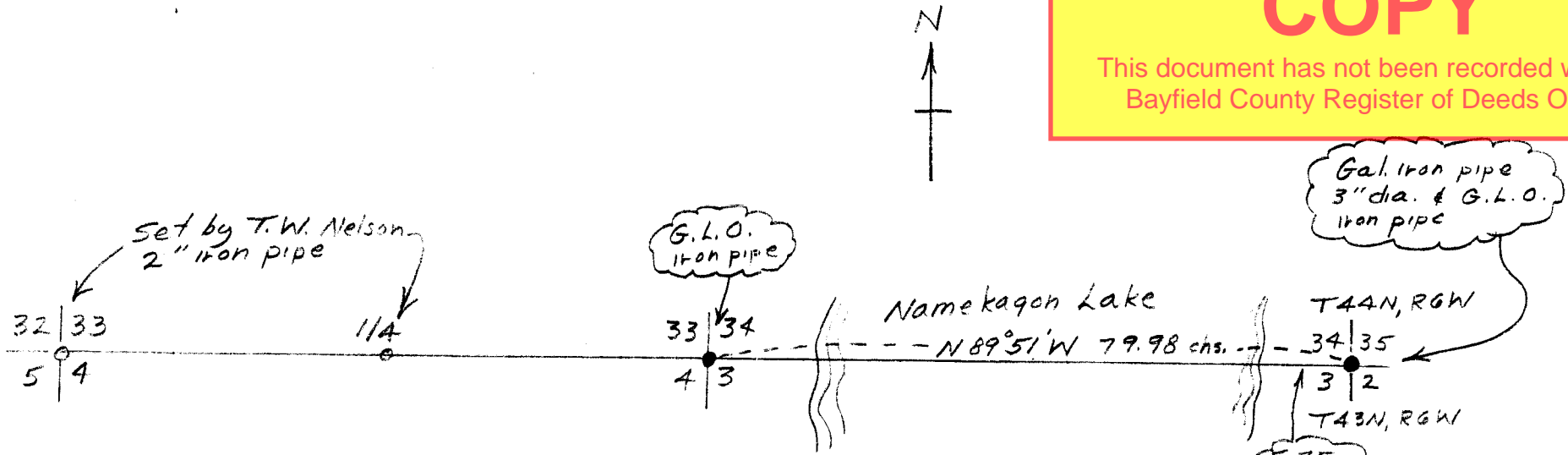


#2309

UNOFFICIAL  
34-44-6  
COPY

This document has not been recorded with the  
Bayfield County Register of Deeds Office.



N 89° 51' W bet. 34 & 3  
(General Land Office)

- 5.75 E. shore lake.
- 63.88 Point on W. shore lake.
- 67.58 Road, bts. N & S.
- 68.70 Enter muskeg swamp, bts. N & S
- 73.90 Leave swamp, bts. N & S, enter high land  
entirely surrounded by swamp.
- 77.60 Leave high land, bts. NE & SW, reenter swamp.
- 79.98 The cor. of secs. 3-4-33-34  
Set 2" iron post w/brass cap.