

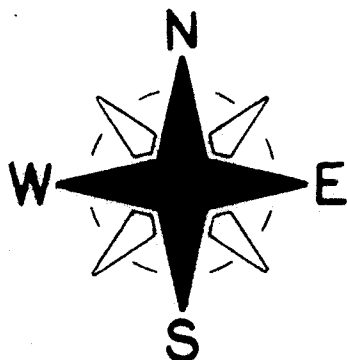
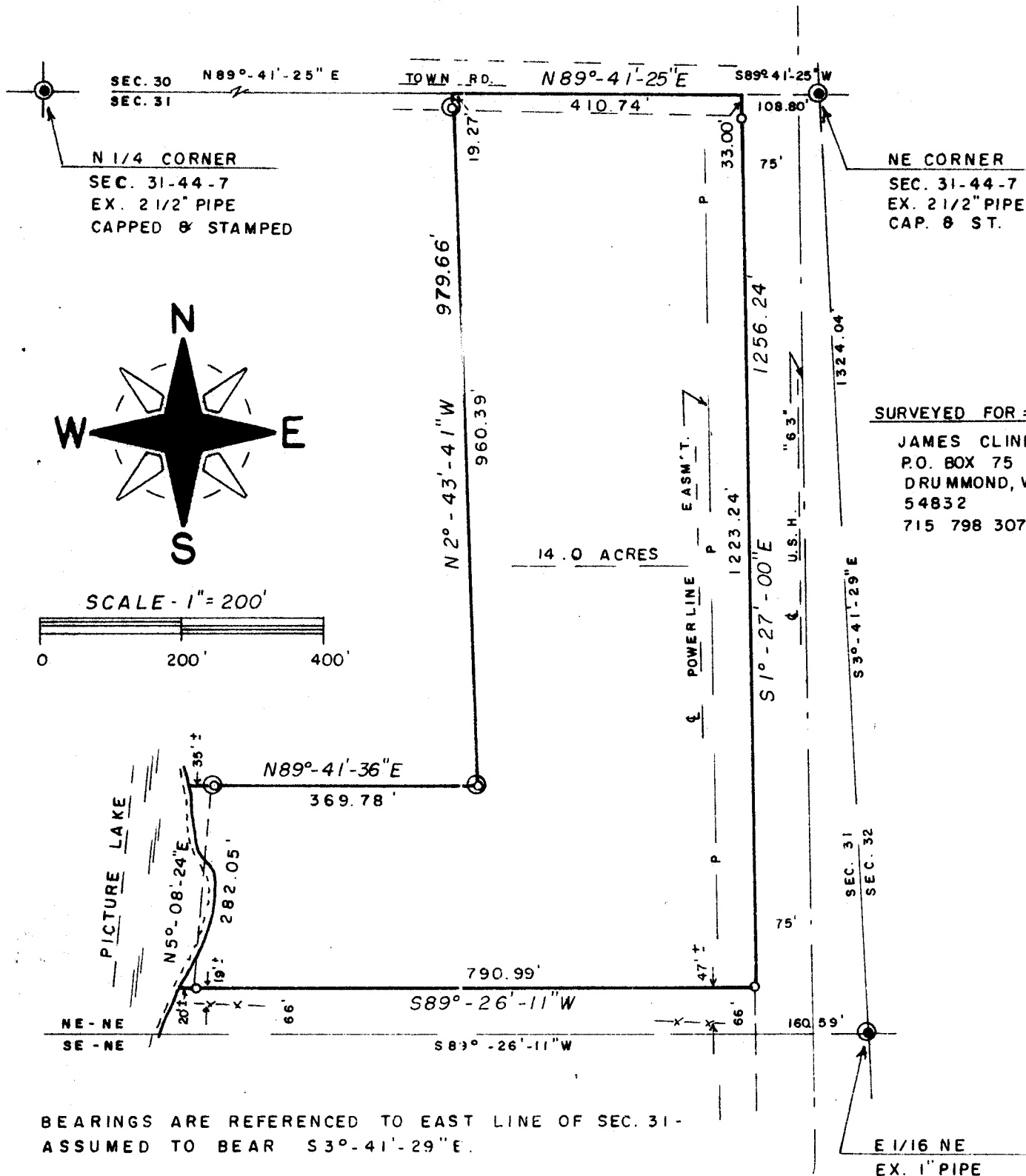
UNOFFICIAL COPY

2469

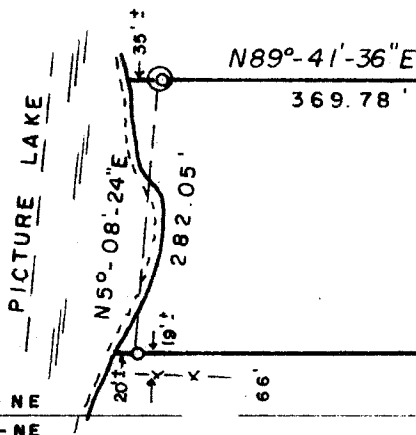
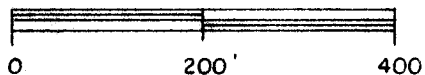
This document has not been recorded with the Bayfield County Register of Deeds Office.

PLAT OF

OF LANDS LOCATED IN THE NE1/4-NE1/4, SEC. 31-T44N-R7W, TOWN OF DRUMMOND, BAYFIELD COUNTY, WISCONSIN.



SCALE - 1" = 200'



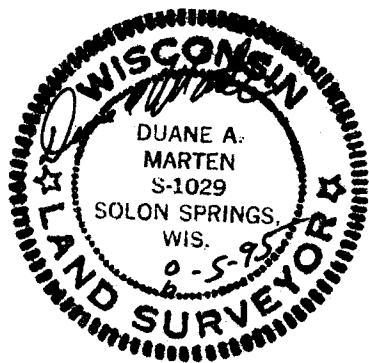
BEARINGS ARE REFERENCED TO EAST LINE OF SEC. 31- ASSUMED TO BEAR S3°-41'-29\"/>

- ⊙ = EX. 1" IRON PIPE SET BY J. SCHMIDT - S-1059
- = SET 1 1/4" x 24" IRON PIPE - MIN. WT. 1.13 LBS./LIN. FT.

I HEREBY CERTIFY THE ABOVE MAP IS TRUE AND CORRECT TO THE BEST OF MY KNOWLEDGE AND BELIEF. DATED THIS 5 DAY OF Aug, 1995.

Duane A. Marten

DUANE A. MARTEN - REG. LAND SURVEYOR
VACATIONLAND SURVEYORS, INC.
SOLON SPRINGS, WIS.



NE-NE
31-44-7