

# UNOFFICIAL COPY

This document has not been recorded with the Bayfield County Register of Deeds Office.

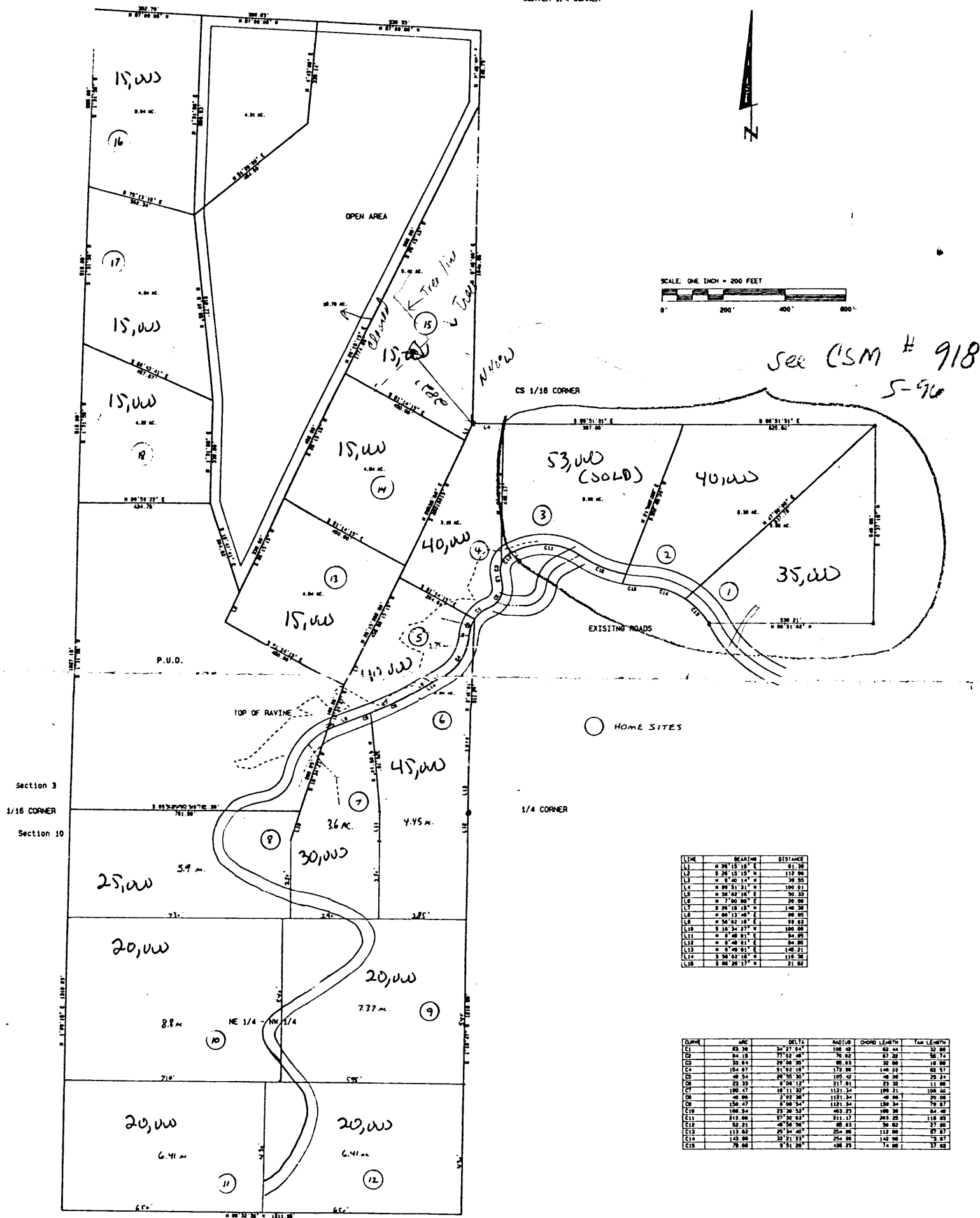
PRELIMINARY LAYOUT

FIRE TOWER HILL PROPERTY

LOCATED IN SECTIONS 3 AND 10, T.50N., R.4W., IN THE TOWN OF BAYFIELD, BAYFIELD COUNTY, WISCONSIN.

SW 1/16 CORNER

CENTER 1/4 CORNER



SCALE: ONE INCH = 200 FEET

see CSM # 918  
5-96

LINE	BEARING	DISTANCE
L1	S 29° 15' 18" E	411.20
L2	S 26° 13' 15" W	112.00
L3	S 4° 40' 14" W	70.25
L4	S 89° 51' 31" E	100.01
L5	S 56° 02' 16" E	50.23
L6	S 7° 00' 00" E	20.00
L7	S 24° 18' 18" E	140.20
L8	S 60° 13' 48" E	88.25
L9	S 54° 51' 18" E	88.25
L10	S 18° 24' 27" E	100.00
L11	S 0° 48' 01" E	84.25
L12	S 0° 48' 01" E	84.25
L13	S 0° 48' 01" E	140.21
L14	S 50° 03' 18" E	110.20
L15	S 80° 26' 17" W	21.62

CURVE	ARC	DELTA	ANGLE	CHORD LENGTH	TANGENT LENGTH
C1	83.26	34.27 67°	106.42	83.44	32.89
C2	84.18	77.02 48°	70.82	83.27	30.74
C3	33.84	20.06 30°	85.83	32.86	18.88
C4	154.87	21.62 14°	172.86	146.29	82.57
C5	48.54	48.56 30°	105.42	48.26	29.14
C6	23.33	0.06 12°	217.81	23.32	11.88
C7	180.23	18.11 32°	1121.34	180.23	100.40
C8	2.23 28°	0.06 54°	1121.34	48.46	29.06
C9	156.47	17.76 53°	1121.34	156.34	79.87
C10	180.24	17.76 53°	483.23	180.24	84.48
C11	212.80	57.26 63°	211.17	203.25	118.08
C12	52.21	48.56 30°	85.83	52.21	27.88
C13	113.63	21.62 14°	254.86	113.63	57.87
C14	143.86	32.71 21°	254.86	143.86	73.87
C15	79.88	0.51 26°	488.23	79.88	37.88

## LEGEND

Monument, as noted, found.  
Monument, as noted, set.

Client - Robert Davidson  
Project - FIRE, 1995  
S3T50NR4W on T50NR4W disk.  
Scale: One inch = 100 feet  
June 22, 1995  
Drafted by: LTN  
Sheet 1 of 1

ELSON  
SURVEYING AND  
ENGINEERING, INC.

101 WEST MAIN STREET  
FIRST FLOOR  
ASHLAND, WI. 54806  
(715) -682-2692

LAND SURVEYING AND PROFESSIONAL ENGINEERING SERVICES  
Map No.