

31-46-4
UNOFFICIAL
(ASHLAND CO.)
COPY

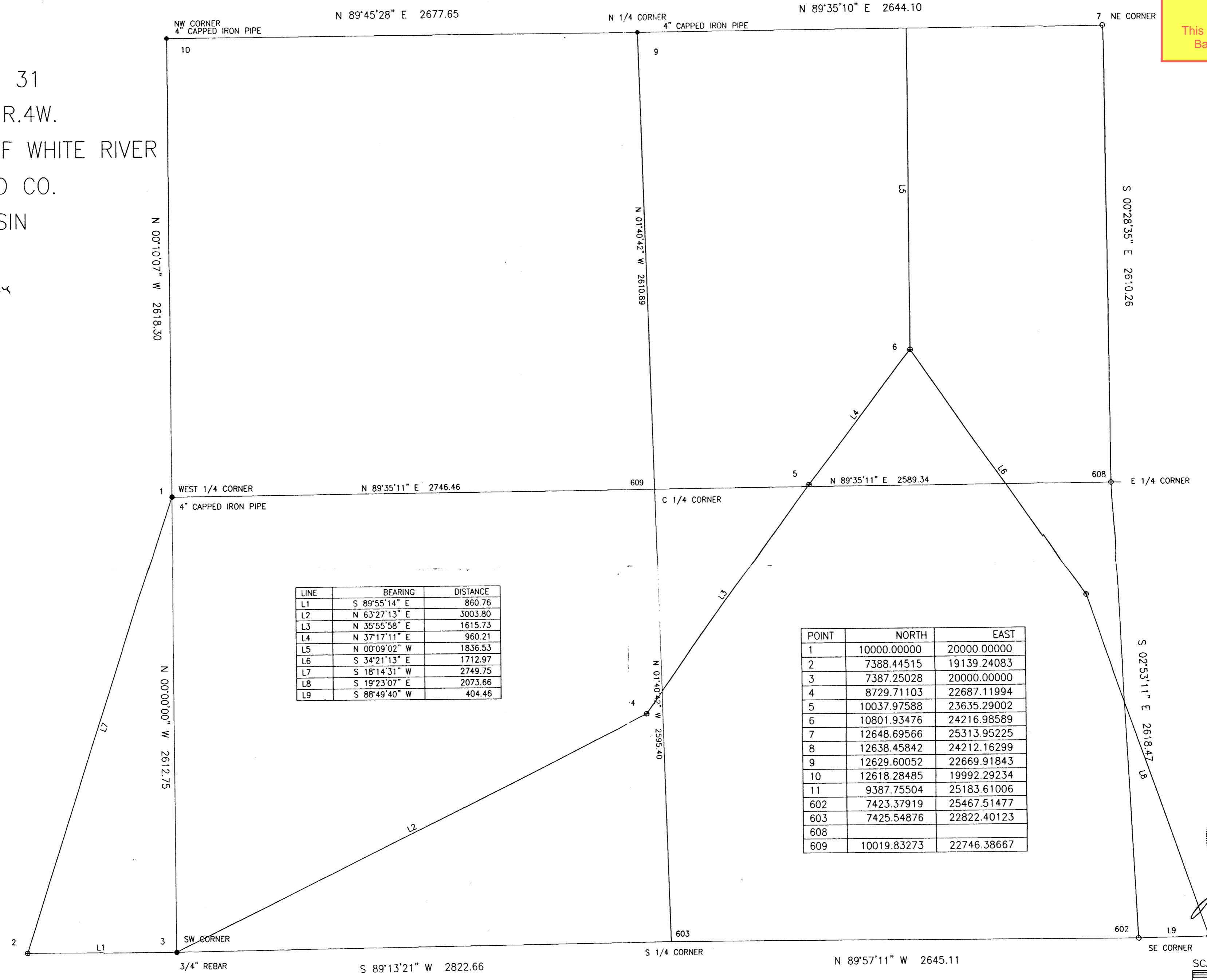
This document has not been recorded with the
Bayfield County Register of Deeds Office.

2739 Note: Also found
in 36-46-5

36-46-5
1-45-5

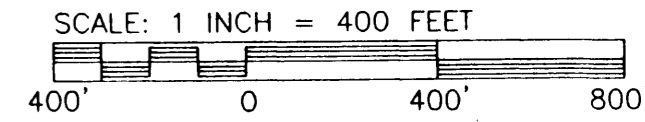
SECTION 31
T.46N., R.4W.
TOWN OF WHITE RIVER
ASHLAND CO.
WISCONSIN

465
36 Kelly



LINE	BEARING	DISTANCE
L1	S 89°55'14" E	860.76
L2	N 63°27'13" E	3003.80
L3	N 35°55'58" E	1615.73
L4	N 37°17'11" E	960.21
L5	N 00°09'02" W	1836.53
L6	S 34°21'13" E	1712.97
L7	S 18°14'31" W	2749.75
L8	S 19°23'07" E	2073.66
L9	S 88°49'40" W	404.46

POINT	NORTH	EAST
1	10000.00000	20000.00000
2	7388.44515	19139.24083
3	7387.25028	20000.00000
4	8729.71103	22687.11994
5	10037.97588	23635.29002
6	10801.93476	24216.98589
7	12648.69566	25313.95225
8	12638.45842	24212.16299
9	12629.60052	22669.91843
10	12618.28485	19992.29234
11	9387.75504	25183.61006
602	7423.37919	25467.51477
603	7425.54876	22822.40123
608		
609	10019.83273	22746.38667



LEGEND
 ● MONUMENT, AS NOTED, FOUND IN PLACE.
 ○ ASHLAND COUNTY SURVEY MONUMENT SET
 * TRAVERSE POINT

CLIENT: SEH
 FILE: S31T46R4
 SCALE: ONE INCH = 400 FEET
 SEPTEMBER 2, 1997
 DRAFTED BY: LTN
 SHEET 1 OF 1

REVISION	DATE

NELSON
 SURVEYING AND
 ENGINEERING, INC.
 LAND SURVEYING AND PROFESSIONAL ENGINEERING SERVICES

101 WEST MAIN STREET
 FIRST FLOOR
 ASHLAND, WI. 54806
 (715)-682-2692

MAP NO. 2754