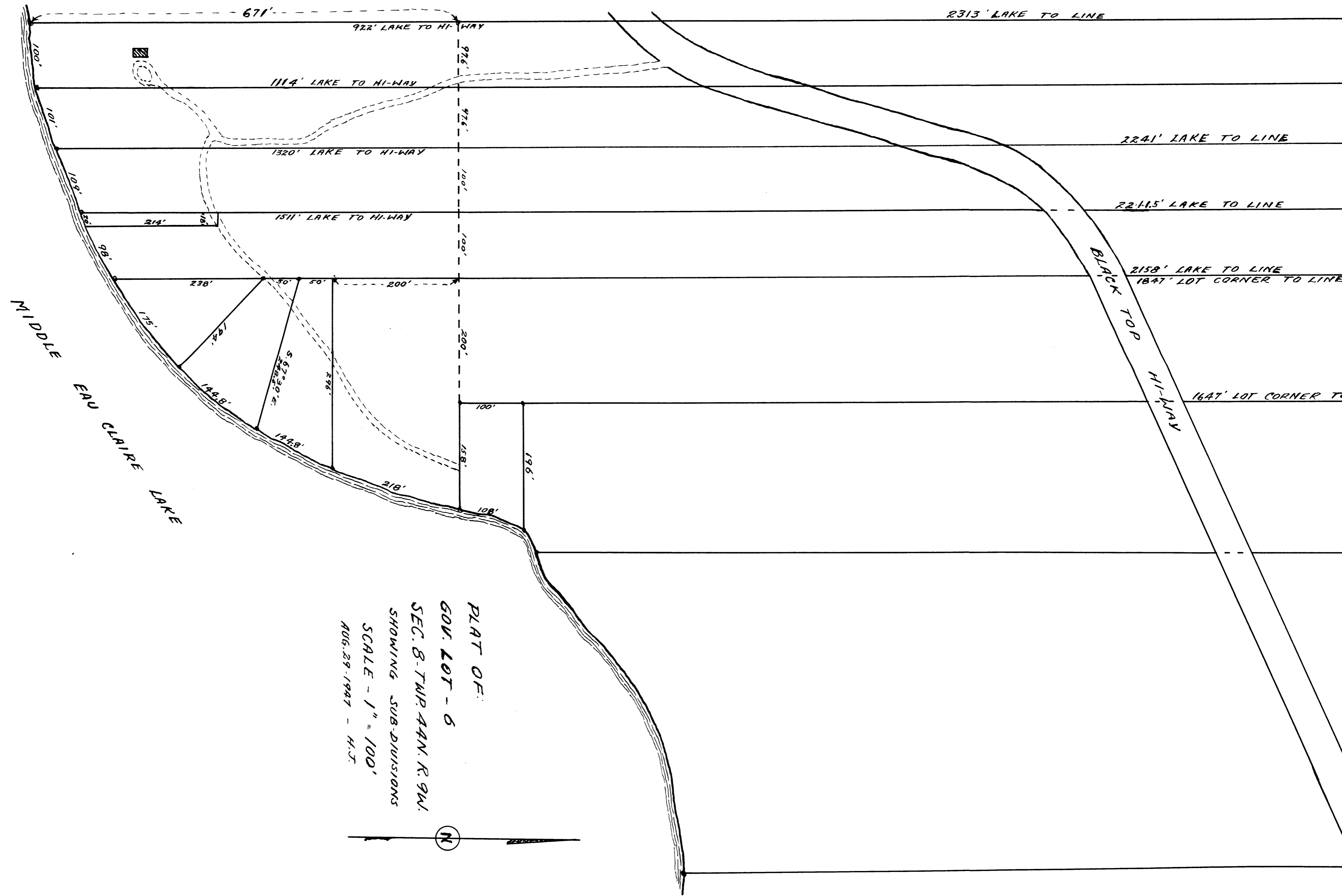


UNOFFICIAL COPY

This document has not been recorded with the Bayfield County Register of Deeds Office.



PLAT OF:
600' LOT - 6
SEC. 8 - TWP. 44N. R. 9W.
SHOWING SUB-DIVISIONS
SCALE - 1" = 100'
AUG. 29 - 1947 - H.J.



250

8-11-47