



Stock No. 26273

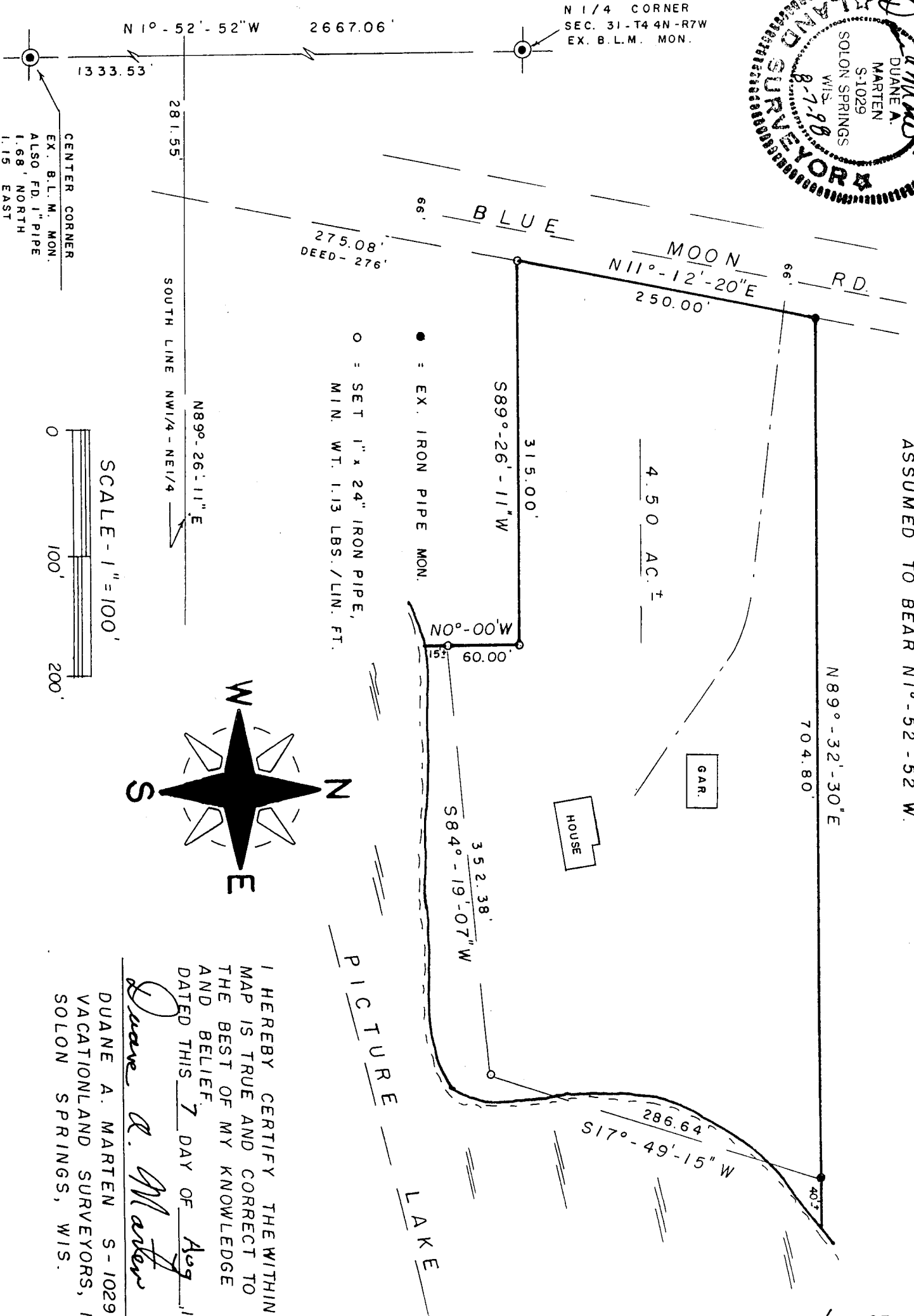
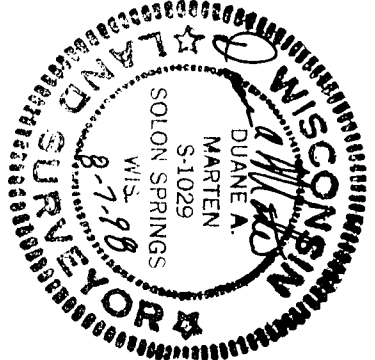
UNOFFICIAL COPY

2889

This document has not been recorded with the Bayfield County Register of Deeds Office.

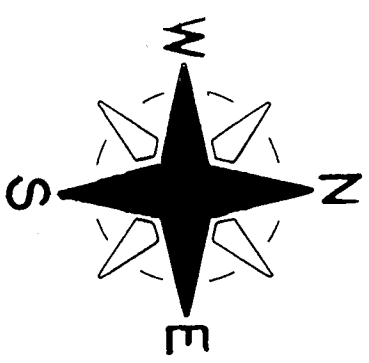
PLAT OF SURVEY

OF LANDS DESCRIBED IN VOL. 668 OF RECORDS, PAGE 252 AND LOCATED IN THE NW1/4-NE1/4, SEC. 31-T44N-R7W, TOWN OF DRUMMOND, BAYFIELD COUNTY, WISCONSIN.

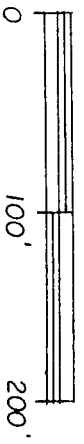


BEARINGS REFERENCED TO N-S 1/4 LINE ASSUMED TO BEAR N1°-52'-52" W.

NW-NE 31-44-7



SCALE - 1" = 100'



CENTER CORNER EX. B.L.M. MON. ALSO F.D. 1" PIPE 1.68' NORTH 1.15' EAST

I HEREBY CERTIFY THE WITHIN MAP IS TRUE AND CORRECT TO THE BEST OF MY KNOWLEDGE AND BELIEF.

DATED THIS 7 DAY OF Aug, 1998.

Duane A. Marten

DUANE A. MARTEN S-1029
 VACATIONLAND SURVEYORS, INC.
 SOLOM SPRINGS, WIS.