

UNOFFICIAL COPY

#2990

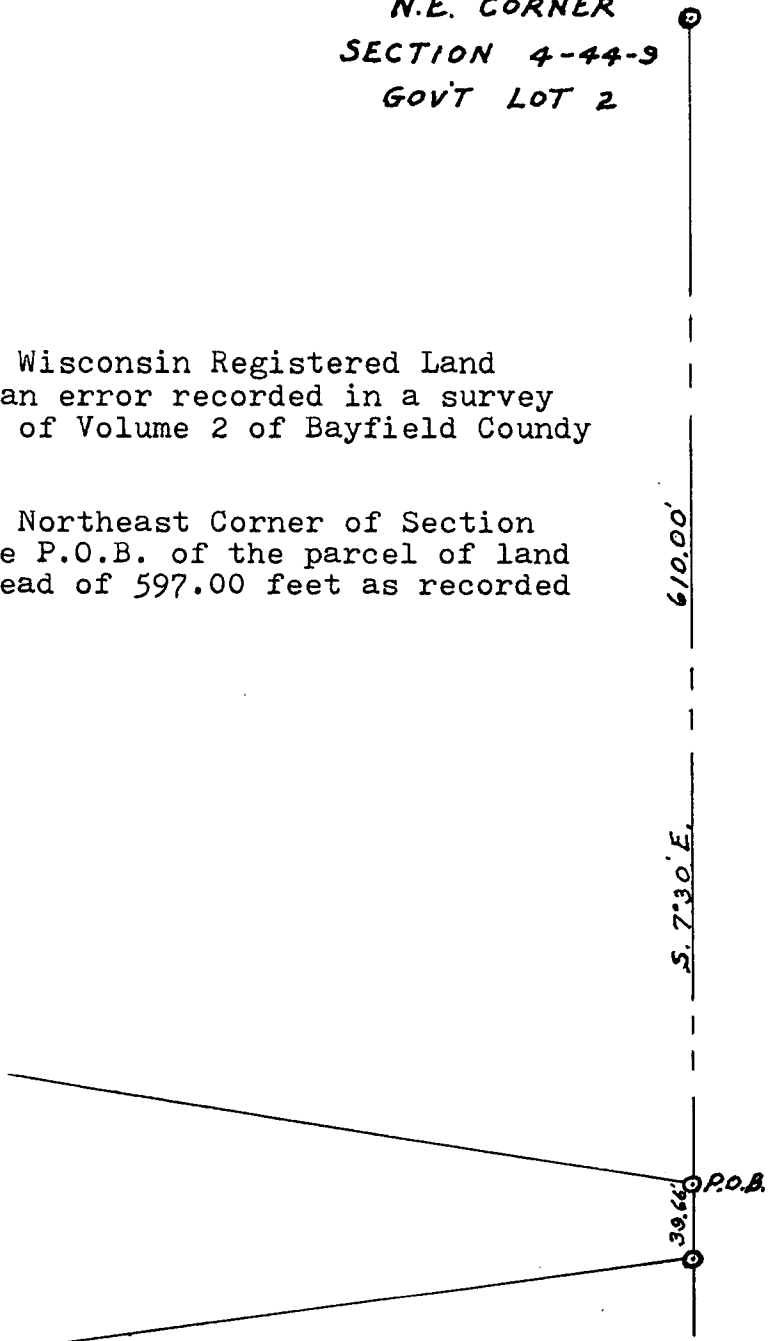
Contact the Bayfield County Register of Deeds Office to obtain an official copy of this document.

322334

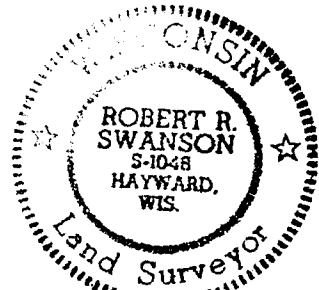
N.E. CORNER
SECTION 4-44-9
GOV'T LOT 2

I, Robert R. Swanson, Wisconsin Registered Land Surveyor, wish to correct an error recorded in a survey recorded on page 226, 226A of Volume 2 of Bayfield County Certified Survey Maps.

The distance from the Northeast Corner of Section 4-44-9 (Gov't Lot 2) to the P.O.B. of the parcel of land should be 610.00 feet instead of 597.00 feet as recorded on the Certified Survey.



GL. 2
4-44-9



Robert R. Swanson

7-10-78