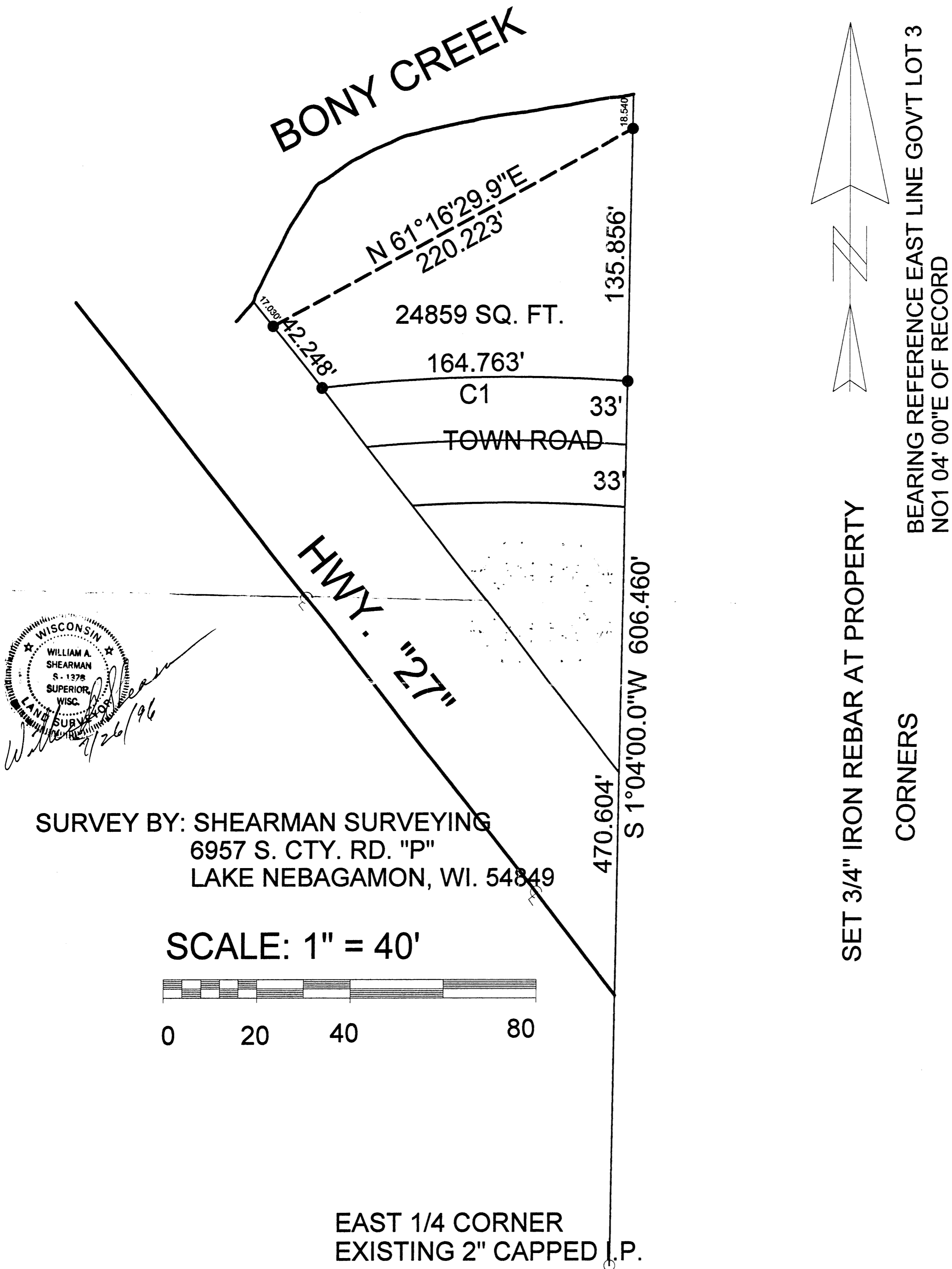


**UNOFFICIAL
COPY**

Contact the Bayfield County Register of Deeds
Office to obtain an official copy of this document.

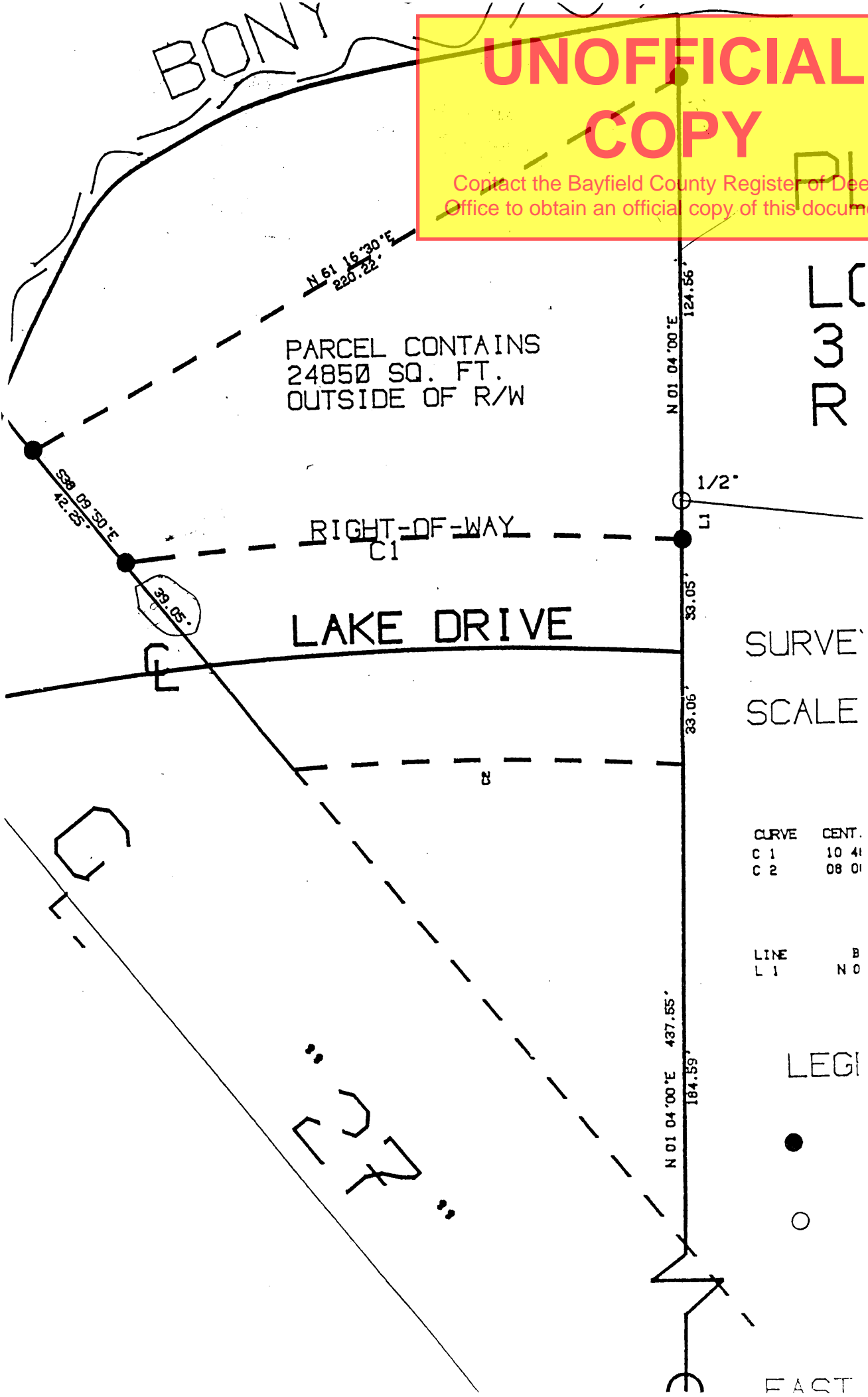
PLAT OF SURVEY

PARCEL OF LAND LOCATED IN GOV'T LOT 3,
SECTION 8, TOWN 44 NORTH, RANGE 9 WEST,
TOWN OF BARNES, BAYFIELD COUNTY WISCONSIN



UNOFFICIAL COPY

Contact the Bayfield County Register of Deeds Office to obtain an official copy of this document.



PARCEL CONTAINS
24850 SQ. FT.
OUTSIDE OF R/W

RIGHT-OF-WAY
C1

LAKE DRIVE

SURVEY
SCALE

CURVE	CENT.
C 1	10 41
C 2	08 01

LINE	B
L 1	N 0

LEG

FAST