



Stock No. 26273

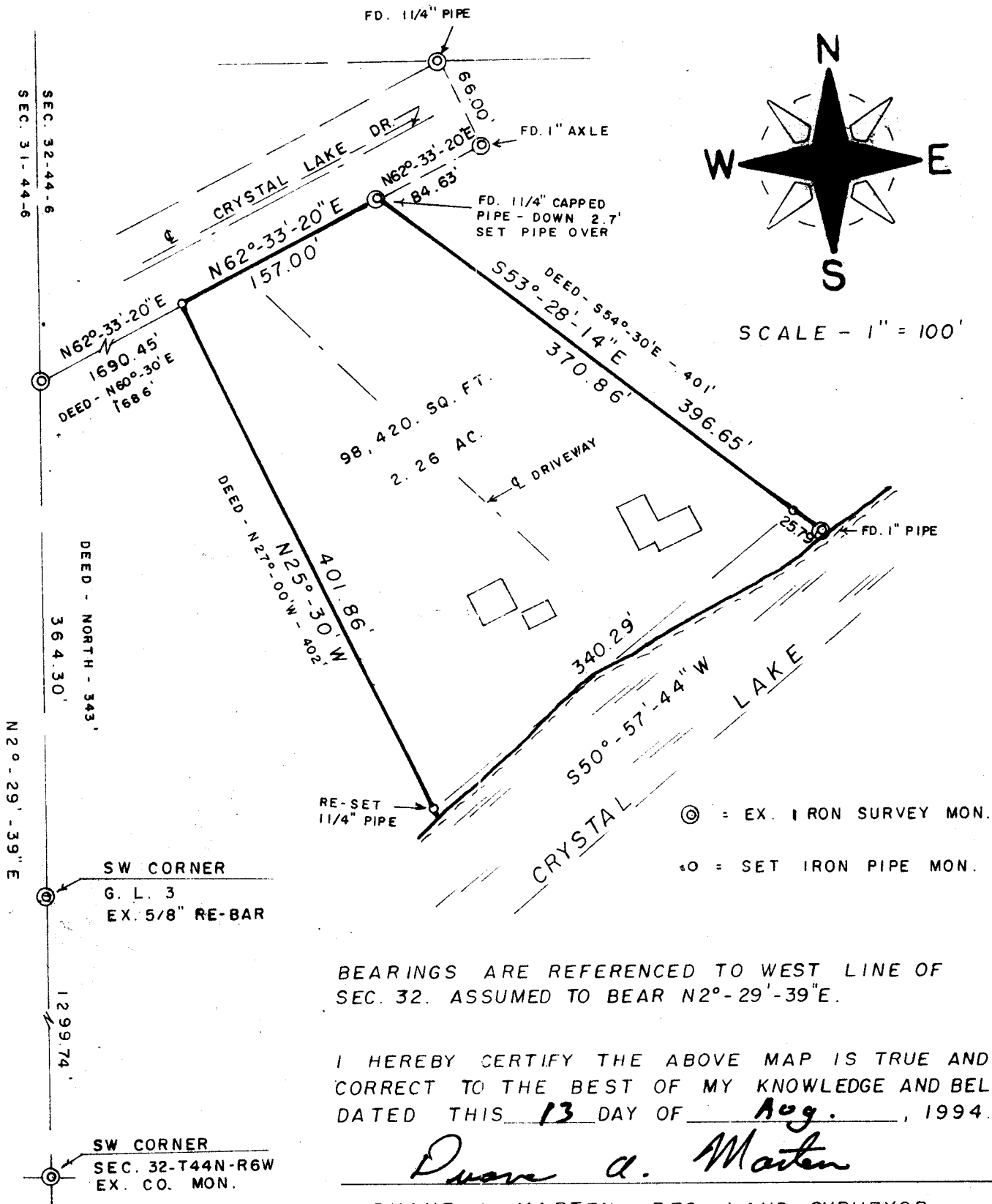
UNOFFICIAL COPY

This document has not been recorded with the Bayfield County Register of Deeds Office.

PLAT OF

LANDS LOCATED IN GOV'T. LOT 3, SEC. 32-T44N-R6W, TOWN OF GRANDVIEW, BAYFIELD COUNTY, WISCONSIN.

GL 3 32-44-6

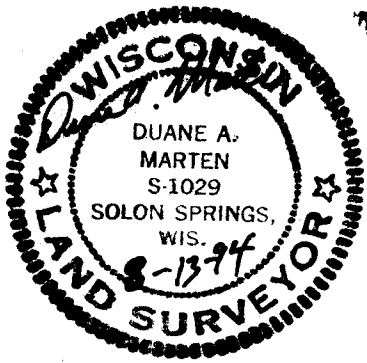


BEARINGS ARE REFERENCED TO WEST LINE OF SEC. 32. ASSUMED TO BEAR N2°-29'-39"E.

I HEREBY CERTIFY THE ABOVE MAP IS TRUE AND CORRECT TO THE BEST OF MY KNOWLEDGE AND BELIEF. DATED THIS 13 DAY OF Aug., 1994.

Duane A. Marten

DUANE A. MARTEN, REG. LAND SURVEYOR
 VACATIONLAND SURVEYORS, INC.
 SOLON SPRINGS, WIS.



SURVEYED FOR =
 DAVID STOKES
 1701 WELLESLEY AVE.
 ST. PAUL, MN. 55105

3079