

UNOFFICIAL COPY

3299
b6e3 #

This document has not been recorded with the Bayfield County Register of Deeds Office.

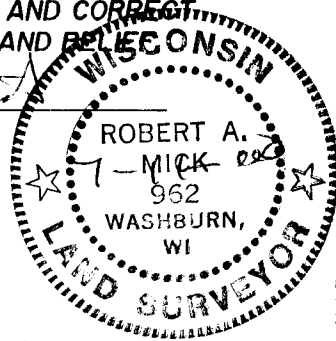
BOUNDARY SURVEY

OF THE N.1/2 AND THE S.1/2 OF THE S.1/2 OF THE SW.1/4 OF THE NW.1/4 OF SEC. 3, T.49N.,R.9W, TOWN OF ORIENTA, BAYFIELD COUNTY, WI.

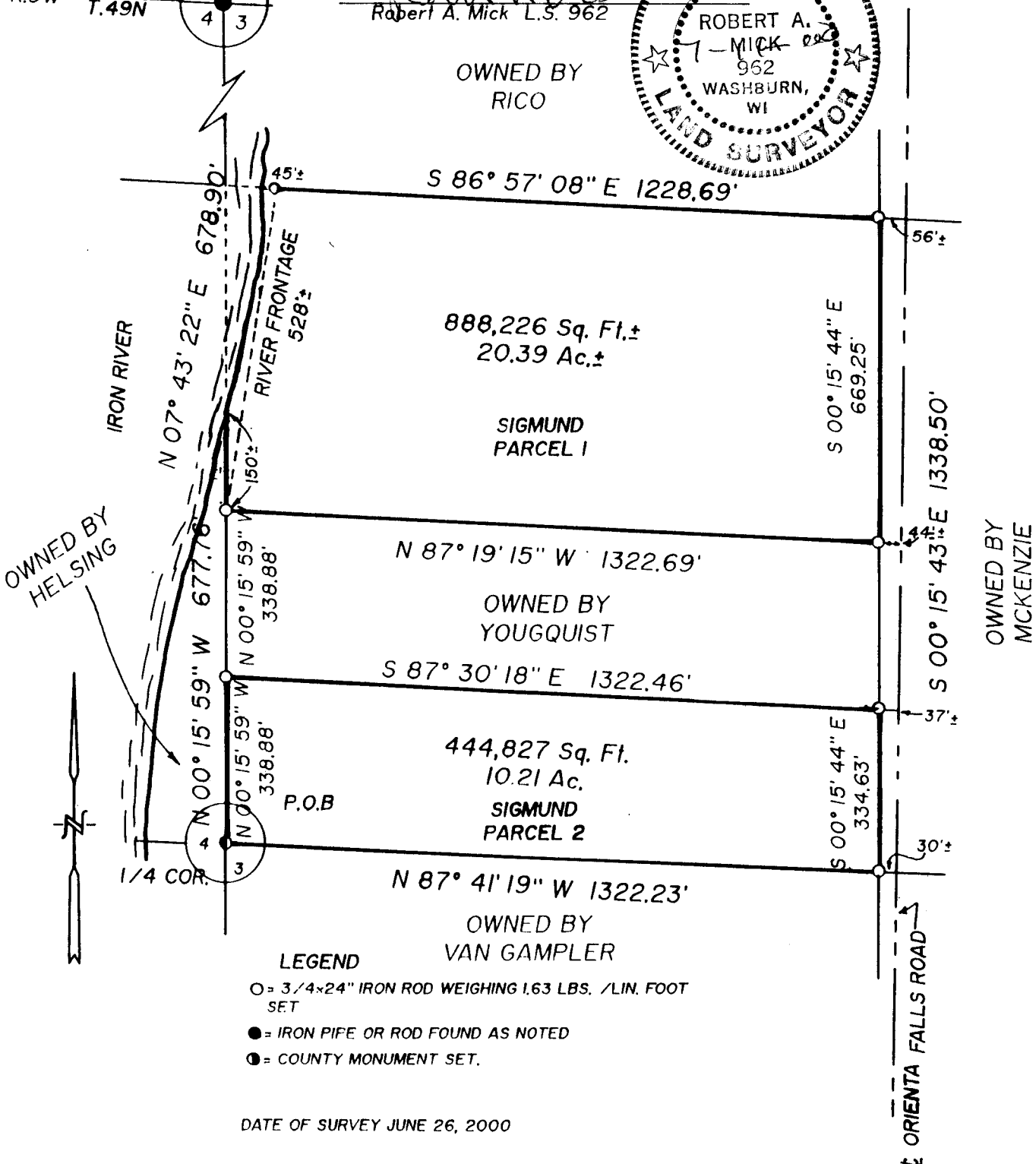
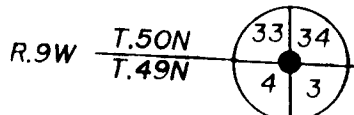
CERTIFICATE OF SURVEY

I HEREBY CERTIFY THIS MAP IS TRUE AND CORRECT TO THE BEST OF MY KNOWLEDGE AND BELIEF

Robert A. Mick
Robert A. Mick L.S. 962



OWNED BY RICO



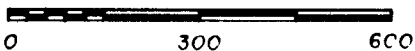
LEGEND

- = 3/4x24" IRON ROD WEIGHING 1.63 LBS. /LIN. FOOT SET
- = IRON PIPE OR ROD FOUND AS NOTED
- ⊙ = COUNTY MONUMENT SET.

DATE OF SURVEY JUNE 26, 2000

SUPERIOR SURVEYS, INC.
78215 STATE HWY. 13
WASHBURN WIS. 54891

SCALE



OWNED BY MCKENZIE

6-64-9 MN-MS