

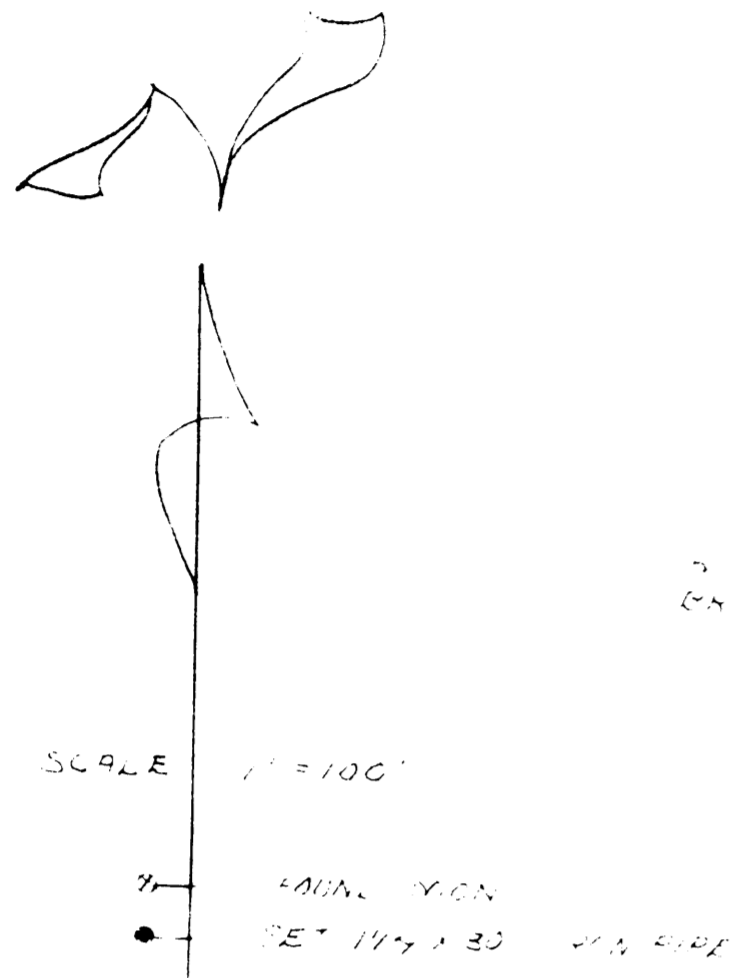
17042

UNOFFICIAL COPY

E 0-125

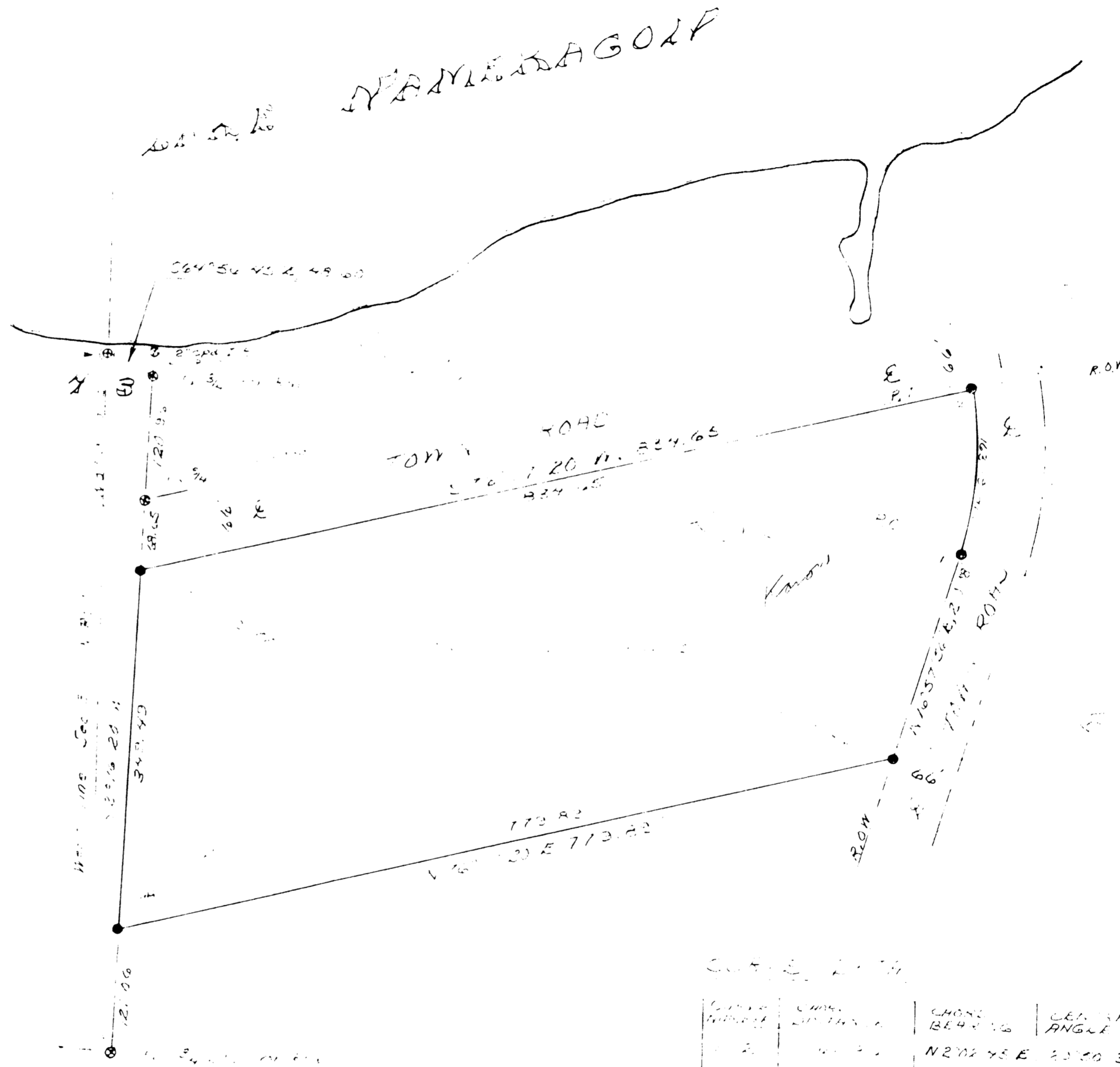
This document has not been recorded with the Bayfield County Register of Deeds Office.

ASB HARRY RISBERG



BEARING BASED ON THE MERIDIAN OF GREENWICH

JUNE 20 1922



CURVE DATA

CURVE NUMBER	CURVE DESCRIPTION	CHORD BEARING	CENTRAL ANGLE	RADIUS
1	1	N 202 45 E	150 30"	312.34

BY
 HEART OF THE APPOINTED SURVEYORS 1276.

SURVEY OF PART OF GOVT LOT 6 SEC 3, T43N R6W WISCONSIN STATE THAT TO THE BEST OF MY KNOWLEDGE AND ABILITY THIS MAP IS A CORRECT REPRESENTATION OF THE SURVEY MADE

ASB HARRY RISBERG