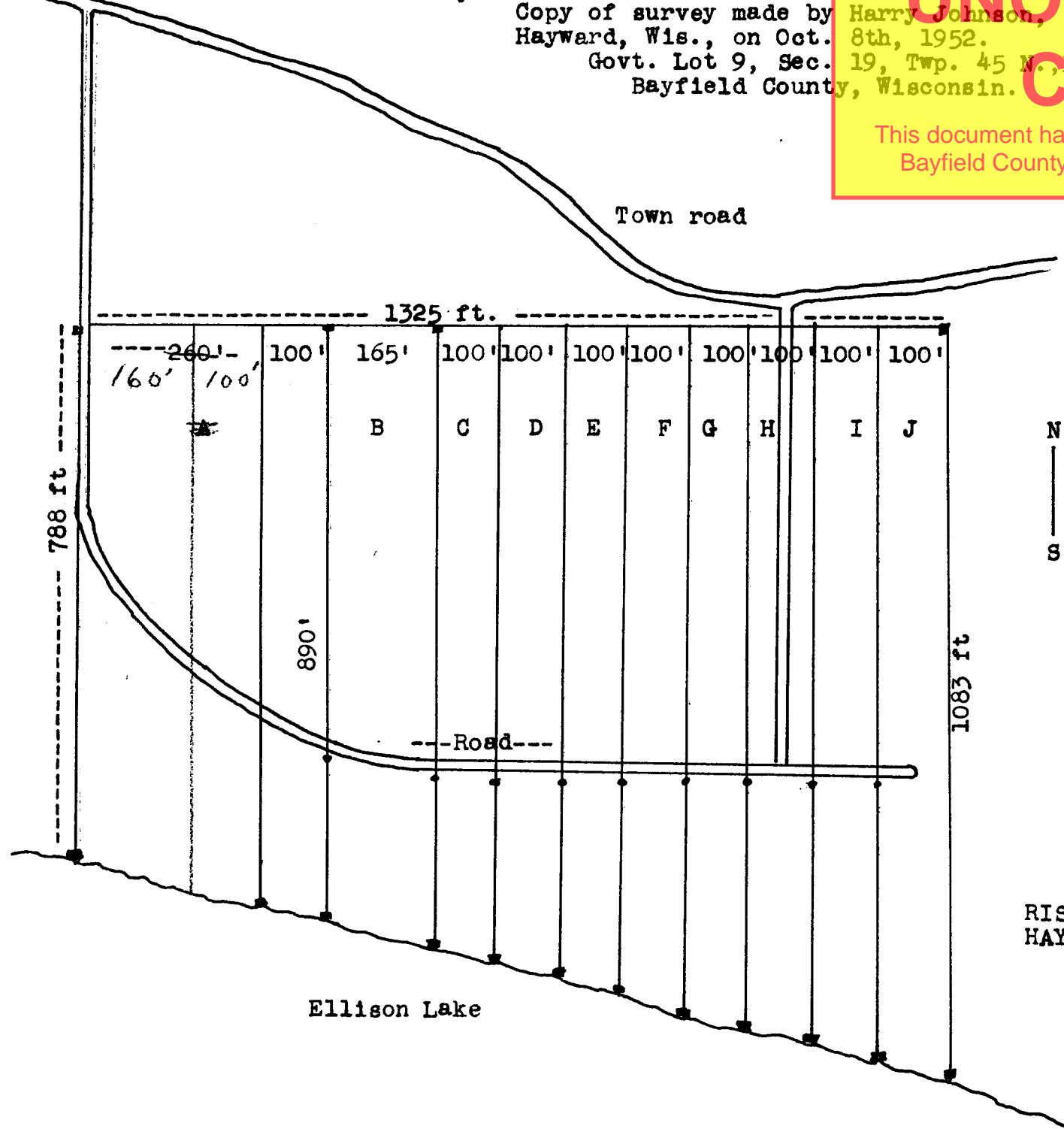


24-P1

P 10

Copy of survey made by Harry Johnson, Surveyor,  
Hayward, Wis., on Oct. 8th, 1952.  
Govt. Lot 9, Sec. 19, Twp. 45 N., Range 9 West  
Bayfield County, Wisconsin.

**UNOFFICIAL COPY**  
This document has not been recorded with the  
Bayfield County Register of Deeds Office.



N  
|  
S

RISBERG REAL ESTATE  
HAYWARD - WISCONSIN

Ellison Lake