

# UNOFFICIAL COPY

# 348

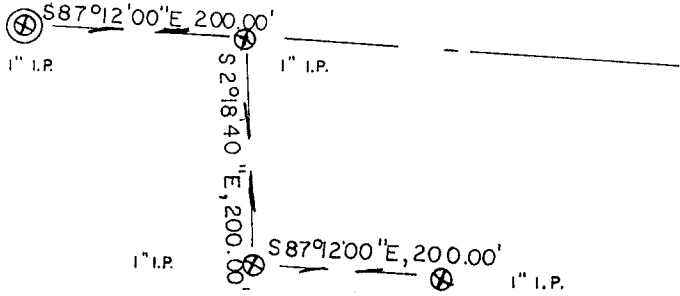
Contact the Bayfield County Register of Deeds Office to obtain an official copy of this document.

Gov. Lot 2 32-44-7

330812

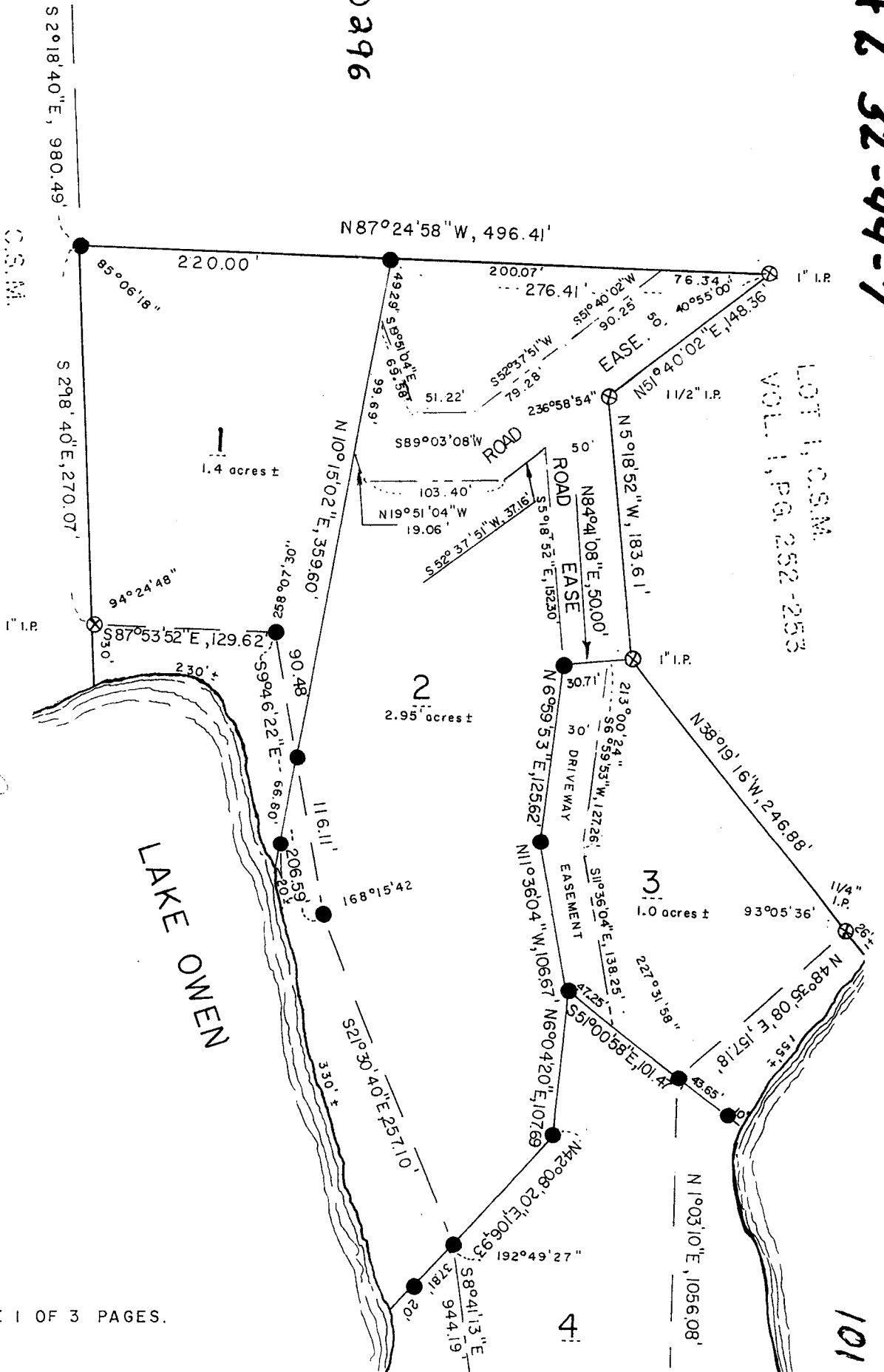
CSM # 000296

NW. CORNER GOVT. LOT 2,  
SEC. 32, T44N, R7W.



SCALE 1=100'

*Ronald J. Peterson*

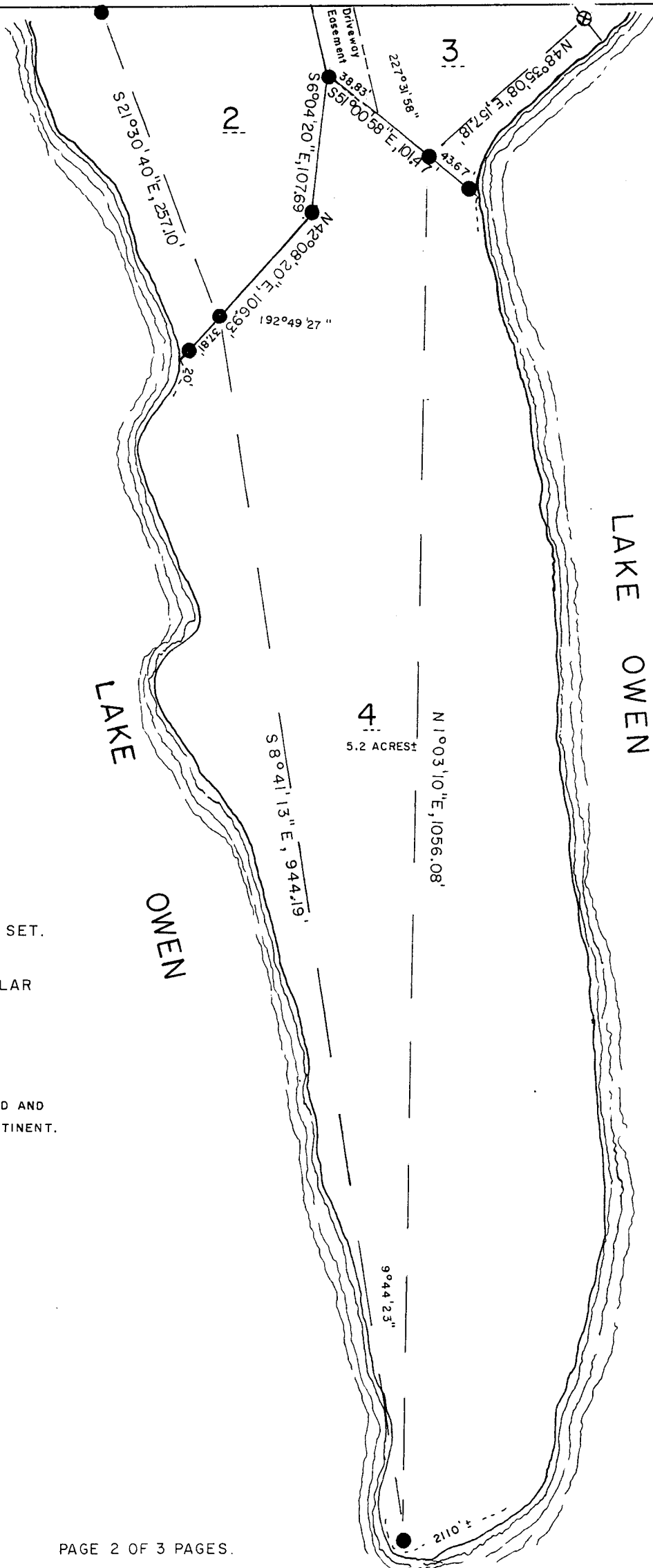


LOT 1, C.S.M.  
VOL. 1, PG. 252-253

# UNOFFICIAL COPY

Contact the Bayfield County Register of Deeds Office to obtain an official copy of this document.

"CONTINUED FROM PAGE 1"



SCALE 1" = 100'

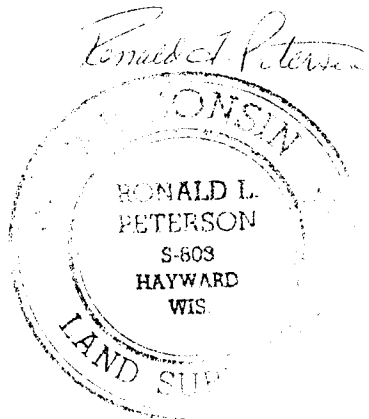
● DENOTES 1" x 30" IRON PIPE SET.

⊗ DENOTES MONUMENT FOUND.

BEARINGS ARE BASED ON SOLAR OBSERVATIONS.

OCTOBER 4, 1979.

NOTE 1 - LOT AREAS INCLUDE ROAD AND DRIVEWAY EASEMENTS WHERE PERTINENT.



# UNOFFICIAL COPY

Contact the Bayfield County Register of Deeds  
Office to obtain an official copy of this document.

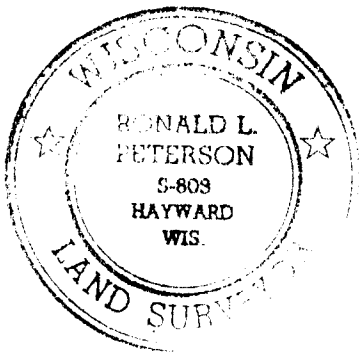
I, Ronald L. Peterson, Wisconsin Registered Land Surveyor, hereby certify that in compliance with Chapter 236.34 of the Wisconsin Statutes and under the direction of Allen R. Owen, owner, I have surveyed, divided and mapped the land herein described, that said map is a correct representation of the survey made, to the best of my knowledge and ability, and that said land is located in Govt. Lot 2, Section 32, T 44 N, R 7 W, described as follows;

Commencing at the Northwest corner of said Govt. Lot 2, Thence S 87° 12' 00" E, 200.00 feet, Thence S 2° 18' 40" E, 200.00 feet, Thence S 87° 12' 00" E, 200.00 feet, Thence S 2° 18' 40" E, 980.49 feet to the actual point of beginning, Thence continue S 2° 18' 40" E, 270.07 feet, to a meander corner on the Northerly shore of Lake Owen, Thence along the meander line of Lake Owen as follows, S 87° 53' 52" E, 129.62 feet, Thence S 9° 46' 22" E, 206.59 feet, Thence S 21° 30' 40" E, 257.10 feet, Thence S 8° 41' 13" E, 944.19 feet, Thence N 1° 03' 10" E, 1056.08 feet, Thence N 48° 35' 08" E, 157.18 feet, to the end of said meander line, Thence N 38° 19' 16" W, 246.88 feet, Thence N 5° 18' 52" W, 183.61 feet, Thence N 51° 40' 02" E, 148.36 feet, Thence N 87° 24' 58" W, 496.41 feet, to the point of beginning and including all the land between the meander line and the waters edge of Lake Owen, between the parcel lines extended.  
Subject to all existing easements and reservations.

This instrument drafted by  
Ronald L. Peterson  
October 8, 1979.

Approved this 15TH day of S OCTOBER, 1979, by Dawid Kuc  
Bayfield Co. Zoning Admin.

*Ronald L. Peterson*



Page 3 of 3 pages.