

UNOFFICIAL COPY

M.S.A. FILE NO. 38-103-6

This document has not been recorded with the Bayfield County Register of Deeds Office.

PROJECT NO. 7759

CLIENT: NATIONAL FOREST SERVICE

STREET: P.O. BOX 280

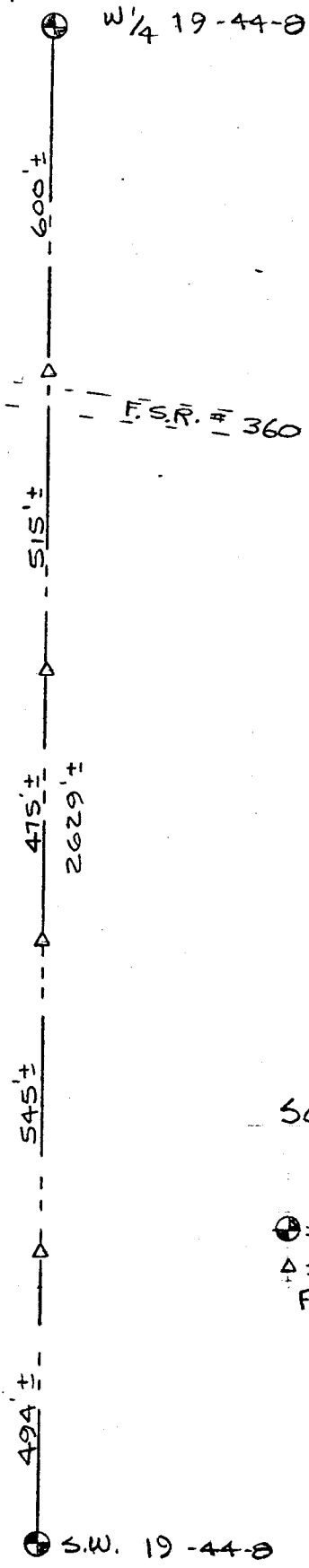
CITY: PARK FALLS, WISCONSIN

MID-STATE ASSOCIATES INC. BARABOO, WISCONSIN 53913

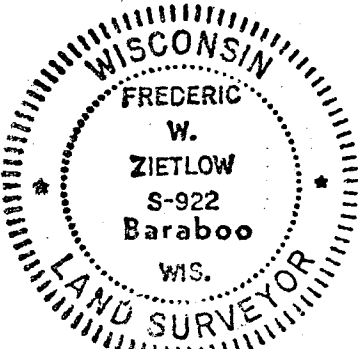
PLAT OF SURVEY

WEST LINE SW. 1/4 SECTION 19 - T.44N. - R.8W.
BAYFIELD COUNTY, WISCONSIN

#3639



SW 1/4



Frederic W. Zietlow
5-22-80

SCALE: 1"=300'

LEGEND

- ⊕ = 2 1/2" I.P. w/ 3/2" SCREW CAP
 - △ = NATIONAL FOREST SIGN POST
- FIELD SURVEY COMPLETE 4-30-80

19-44-8