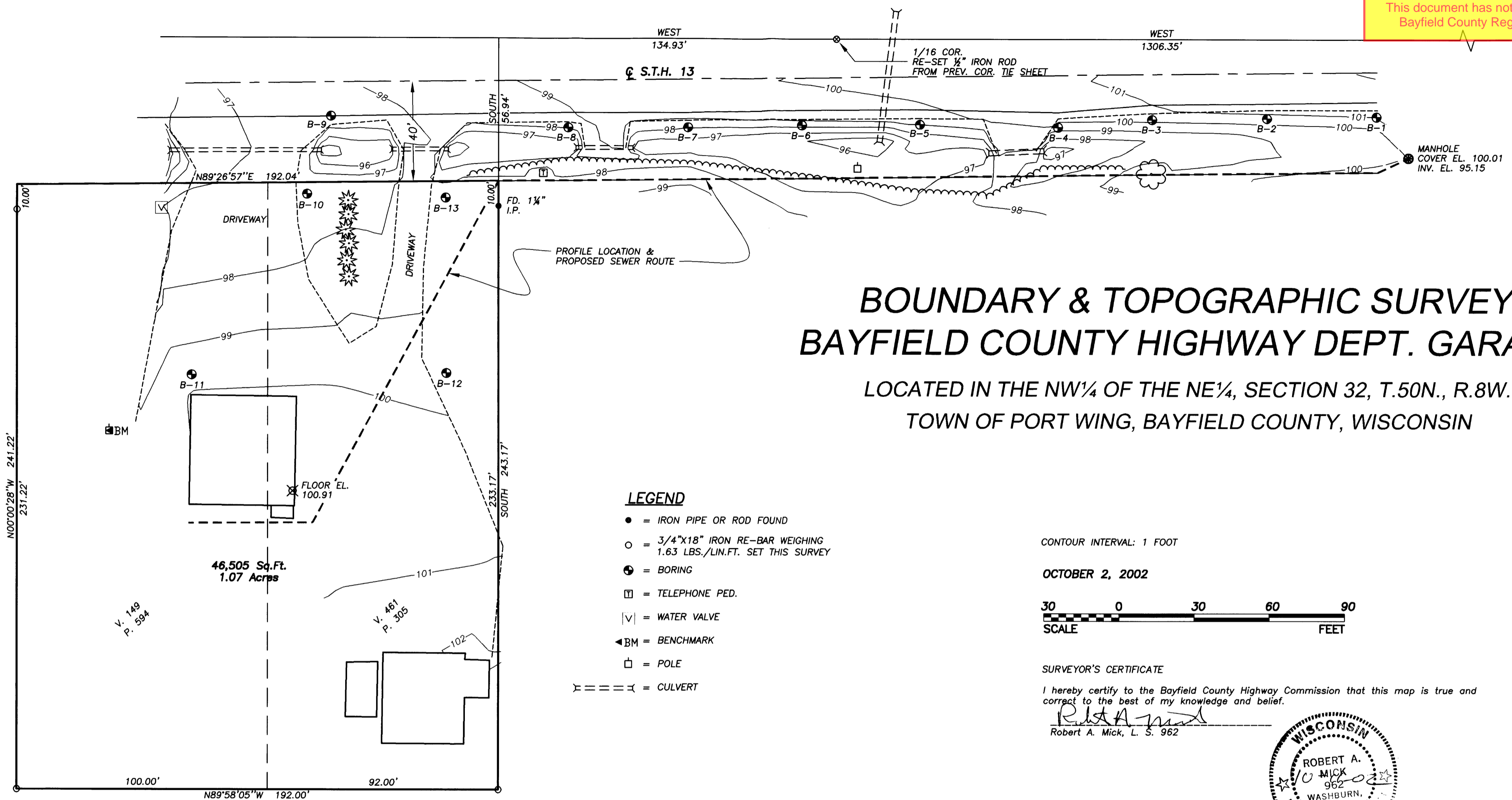
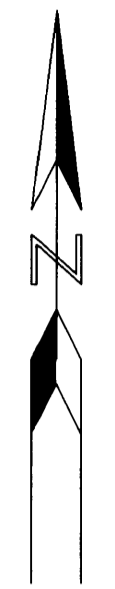
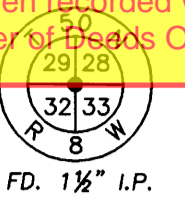


#3709

NW-NE

32-50-8  
**UNOFFICIAL COPY**

This document has not been recorded with the Bayfield County Register of Deeds Office.



# BOUNDARY & TOPOGRAPHIC SURVEY BAYFIELD COUNTY HIGHWAY DEPT. GARAGE

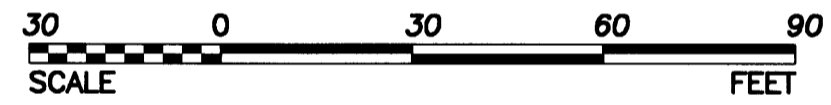
LOCATED IN THE NW¼ OF THE NE¼, SECTION 32, T.50N., R.8W.  
TOWN OF PORT WING, BAYFIELD COUNTY, WISCONSIN

### LEGEND

- = IRON PIPE OR ROD FOUND
- = 3/4"x18" IRON RE-BAR WEIGHING 1.63 LBS./LIN.FT. SET THIS SURVEY
- ⊕ = BORING
- = TELEPHONE PED.
- |∇| = WATER VALVE
- ◄BM = BENCHMARK
- = POLE
- = CULVERT

CONTOUR INTERVAL: 1 FOOT

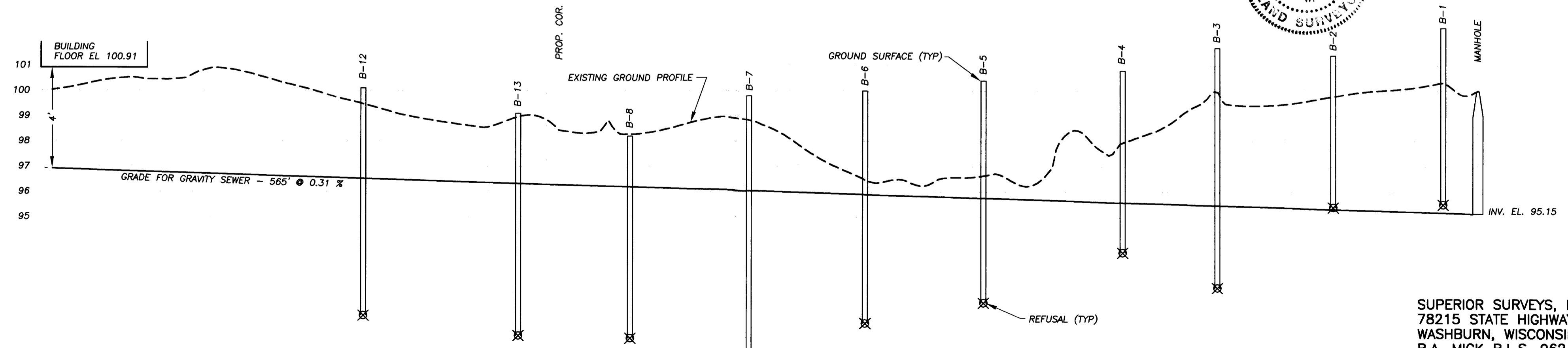
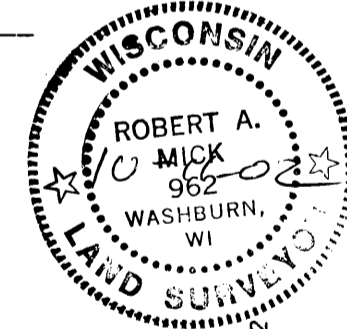
OCTOBER 2, 2002



### SURVEYOR'S CERTIFICATE

I hereby certify to the Bayfield County Highway Commission that this map is true and correct to the best of my knowledge and belief.

*Robert A. Mick*  
Robert A. Mick, L. S. 962



SUPERIOR SURVEYS, INC.  
78215 STATE HIGHWAY 13  
WASHBURN, WISCONSIN  
R.A. MICK R.L.S. 962