

UNOFFICIAL COPY

#408
8047#

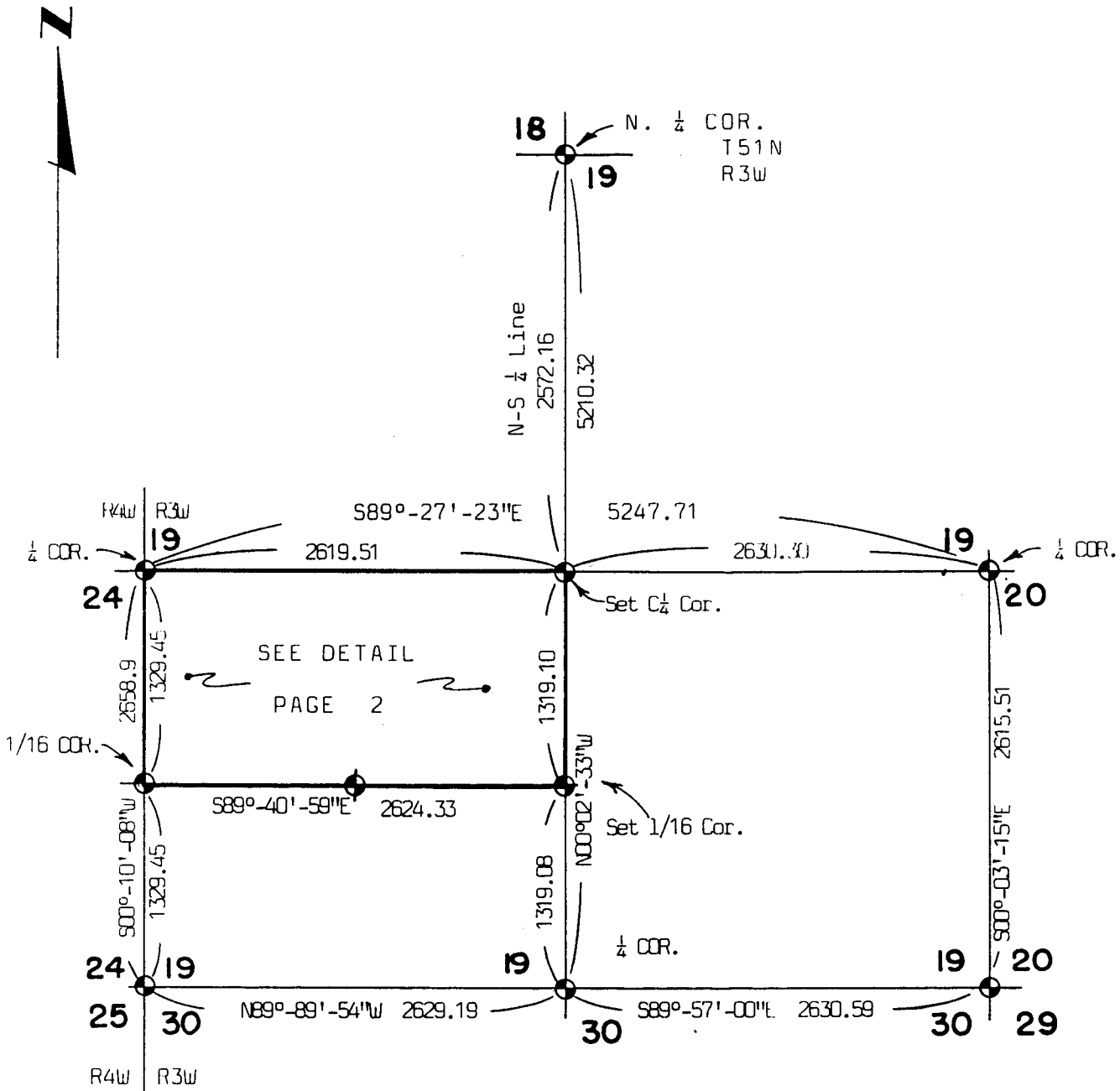
Contact the Bayfield County Register of Deeds Office to obtain an official copy of this document.

PAGE 1 OF 4 PAGES

PLAT OF SURVEY US Government Land

RED CLIFF INDIAN RESERVATION
PART OF N $\frac{1}{2}$, SW $\frac{1}{4}$, SEC 19, T51N, R3W
BAYFIELD COUNTY, WISCONSIN
CSM # 000386

347036



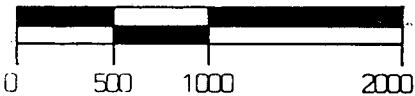
N 1/2 SW 1/4 19-51-3

LEGEND:

- Found 2 1/2" dia. brass capped pipe Set by the Bureau of Land Management in a 1975 Survey

NOTE:

- set 3/4"x30" iron rods at plat corners and where indicated
- bearings based on 1975 survey by the B.L.M. (solar observations)



Scale: 1"=1000'

DATE OF SURVEY: 1/82

281

UNOFFICIAL COPY

Contact the Bayfield County Register of Deeds
Office to obtain an official copy of this document.

PAGE 3 OF 4 PAGES

SURVEY NOTES

THIS SURVEY WAS MADE FOR THE RED CLIFF HOUSING AUTHORITY, RED CLIFF INDIAN RESERVATION FOR THE PURPOSE OF RECOVERING, ESTABLISHING, MARKING, AND PERPETUATING THE CORNERS AND BOUNDARY LINES AND WITHIN SECTION 19, TOWNSHIP 51 NORTH, RANGE 3 WEST, 4TH PRINCIPAL MERIDIAN, BAYFIELD COUNTY, WISCONSIN.

THE ORIGINAL TOWNSHIP BOUNDARIES OF TOWNSHIP 51 NORTH, RANGE 3 WEST WERE CONDUCTED BY ELISHA S. NORRIS, DEPUTY SURVEYOR, 1852. THE SUBDIVISION LINES WERE SURVEYED BY J. ALLEN BARBER, DEPUTY SURVEYOR, IN 1857. THE RECORDS AND PLATS OF THE ORIGINAL GOVERNMENT SURVEYS AND UNRECORDED RECORDS AND FIELD NOTES OF SUBSEQUENT SURVEY WORK WERE USED IN THIS SURVEY.

THE CORNER POSITIONS RECOVERED, AND ESTABLISHED BY THIS SURVEY ARE MARKED BY THE MONUMENT AND REFERRED BY THE BEARING TREES AND REFERENCE OBJECTS DESCRIBED ON THE LAND CORNER RECORDATION CERTIFICATE ON PUBLIC RECORD WITH THE REGISTER OF DEEDS OFFICE FOR BAYFIELD COUNTY, WISCONSIN.

THE BEARINGS BETWEEN CORNER POSITIONS ARE TRUE BEARINGS BY REFERENCE TO SOLAR OBSERVATIONS ON THE SECTION SUBDIVISION FOR SECTION 19. THE CONTROL TRAVERSE FOR CORNER RESTORATION AND ESTABLISHMENT MEETS THE STATE MINIMUM ACCURACY REQUIREMENTS OF 1 PART IN 3,000.

CORNERS ESTABLISHED

1. CENTER QUARTER CORNER SECTION 19
SET PK NAIL IN CENTERLINE OF DUMP ROAD.

D.H. NAIL & CAP IN P. POLE	N50°E	76.55 FEET
D.H. NAIL & CAP IN P. POLE	N51°W	50.93 FEET

2. SOUTH SIXTEENTH CORNER ON N-S 1/4 LINE OF SECTION 19.
SET 3/4" x 36" IRON ROD.

4" W. BIRCH	N71°W	29.00 FEET
3" OAK	S26°W	56.38 FEET

3. SOUTHWEST SIXTEENTH CORNER OF SECTION 19.
SET 3/4" x 36" IRON ROD.

6" W. BIRCH	N13°W	23.48 FEET
8" OAK	S45°W	14.33 FEET

THE ABOVE CORNERS WERE ESTABLISHED BY STANDARD SECTIONAL SUBDIVISIONAL METHODS.

UNOFFICIAL COPY

Contact the Bayfield County Register of Deeds Office to obtain an official copy of this document.

PAGE 4 OF 4 PAGES

1975 B.L.M. SURVEY CONTROLLING CORNERS

1. QUARTER CORNER TO SECTIONS 18&19
FOUND NAIL IN CENTERLINE OF PAVEMENT

6" BALSAM	N73°W	57.58 FEET
P. POLE	N70°E	37.95 FEET
2. QUARTER CORNER TO SECTIONS 19&24.
FOUND IRON POST W/BRASS CAP

8" OAK	N11°E	51.48 FEET
6" MAPLE	S02°W	52.80 FEET
3. QUARTER CORNER TO SECTIONS 19&20
FOUND IRON POST W/BRASS CAP

10" MAPLE	S57°E	1.65 FEET
17" OAK	N24°W	21.45 FEET
4. SECTION CORNER TO SECTIONS 19,20,29 & 30
FOUND 1½" HEXAGONAL HEAD BOLT

7" ALDER	N42°E	59.40 FEET
5" ASPEN	S12°E	41.58 FEET
6" ASPEN	S58°W	82.50 FEET
6" BIRCH	N36°W	50.16 FEET
5. QUARTER CORNER TO SECTIONS 19 & 30
FOUND 2½" IRON POST

6" OAK	S72°W	40.26 FEET
11" ASPEN	N38°W	69.30 FEET
6. SECTION CORNER TO SECTIONS 19,24,25 & 30
FOUND 2½" IRON POST

9" MAPLE	N68°E	20.46 FEET
6" ELM	S54°E	53.46 FEET
7" ALDER	S52°W	35.64 FEET
15" OAK	N60°W	35.64 FEET
7. SIXTEENTH CORNER TO SECTIONS 19&24
FOUND 2½" IRON POST

6" BIRCH	N88°E	33.66 FEET
8" MAPLE	S26°W	12.54 FEET

SURVEYOR'S AFFIDAVIT

COUNTY OF GOGEBIC)
STATE OF MICHIGAN) SS

I, JOHN R. GARSKE, A REGISTERED LAND SURVEYOR IN THE STATE OF WISCONSIN, HEREBY CERTIFY THAT THIS PLAT AND THE NOTES HEREON, OR ATTACHED, ARE A CORRECT REPRESENTATION OF A SURVEY I PERFORMED DURING JANUARY 1982, FOR THE RED CLIFF CHIPPEWA HOUSING AUTHORITY IN ACCORDANCE WITH THE STATUTES OF THE STATE OF WISCONSIN AND WITH THE ARTICLES OF MY CONTRACT.

John R. Garske (s)



JOHN R. GARSKE
REGISTERED LAND SURVEYOR
WISCONSIN REGISTRATION NO. S-1685

284