

4308360020  
T R SEC ROW COL

**CERTIFIED  
LAND CORNER RECORD**

Card 1 of

2	3	4	5	6	7
8	9	10	11	12	13

Index No. A-23  
(Alphabetical - Numerical)

S 1 T 42 N, R 8 W

I, NEAL A. HALBERG, do hereby certify that on the 8<sup>th</sup> day of

DECEMBER, 19 99, I recovered or restored the NORTH 44 corner of

Section 1, T 42 N, R 8 W,

Sawyer County Wisconsin, and that the following is a record of the evidence found at this corner and or a record of the new monument and accessories I have set to perpetuate its position.

Signature

*Neal A. Halberg*

Date 02-15-00

RLS W15-1322



Sawyer County Wisconsin

**Previous Surveys**

**Original Evidence Found**

Year of search \_\_\_\_\_ By \_\_\_\_\_  
Monument found \_\_\_\_\_  
Monument set \_\_\_\_\_

**Original Bearing Trees Found**

Species \_\_\_\_\_  
Diameter \_\_\_\_\_  
Bearing \_\_\_\_\_  
Distance \_\_\_\_\_

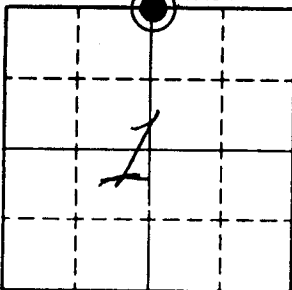
**Evidence of Subsequent Corner Restoration Found**

Year of search 1965 By T. NELSON  
Monument found NONE  
Monument set BC IRON PIPE  
Reference Objects found POSITION BY SINGLE PROPORTION

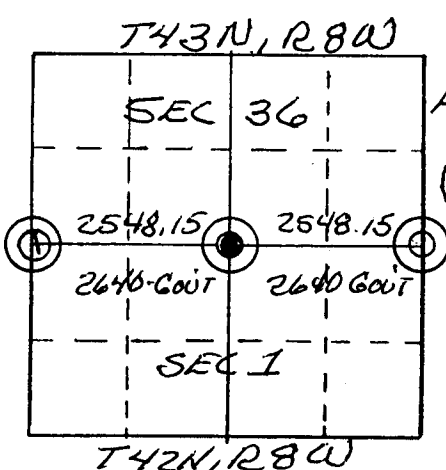
**Bearing Trees, Reference Objects**

Species \_\_\_\_\_  
Diameter \_\_\_\_\_  
Bearing \_\_\_\_\_  
Distance \_\_\_\_\_

Corner Location Sketch



Measurement Comparison Sketch



**Corner Perpetuation Record**

I find the following corner evidence. (If no evidence is found, use this space to describe re-establish procedure)

Monument found 2 1/2" DIA BRASS CAPPED IRON PIPE  
(POSITION NOT ACCEPTED)

Reference objects found A SURVEY OF THE NORTH LINE OF SECTION 1 FINDS THE SINGLE PROPORTION POSITION TO FALL S89°52'34"E 48.35' FROM FOUND BRASS CAPPED MON. MONUMENTED SINGLE PROPORTION POSITION AS NOTED BELOW

I perpetuate this corner in the following manner.

Monument set 3/4" x 3/4" AL MON w/ 3/4" DIA AL CAP @ SINGLE PROPORTION POSITION

Reference objects and description of corner area PLACED MON. FLUSH IN MOUND OF STONE.

- TIES
- 22" N. PINE, S27°W, 23.12' (X & CAP)
  - 12" MAPLE, S88°E, 14.14' (X & CAP)
  - 11" W. PINE, N48°E, 9.77' (X & CAP)
- SET WIT MON
- 1 1/4" x 24" IRON PIPE, S57°23'45"E, 303.01'
  - 1 1/4" x 24" IRON PIPE, S57°23'45"E, 22.80'

Received of the Sawyer County Surveyor's Office this 15<sup>th</sup> day of FEBRUARY, 19 2000, by

County Surveyor

Deputy

**COPY**

ORIGINAL CORNER CARDS ON FILE COUNTY SURVEYORS OFFICE