

4309360000  
T R SEC ROW COL

**CERTIFIED  
LAND CORNER RECORD**

Card 1 of 

1	2	3	4	5	6	7
8	9	10	11	12	13	14

Index No. A-1  
(Alphabetical - Numerical)  
S 6 T 42 N, R 8 W  
I, NEAL A HALBERG, do hereby  
certify that on the 1<sup>st</sup> day of  
JUNE, 19 95, I recovered or  
restored the NORTHWEST corner of  
Section 6, T 42 N, R 8 W,  
Sawyer County Wisconsin, and that the following is a  
record of the evidence found at this corner and or a  
record of the new monument and accessories I have set  
to perpetuate its position.

Sawyer County Wisconsin

**Previous Surveys**

**Original Evidence Found**

Year of search \_\_\_\_\_ By \_\_\_\_\_  
Monument found \_\_\_\_\_  
Monument set \_\_\_\_\_

**Original Bearing Trees Found**

Species \_\_\_\_\_  
Diameter \_\_\_\_\_  
Bearing \_\_\_\_\_  
Distance \_\_\_\_\_

**Evidence of Subsequent Corner Restoration Found**

Year of search \_\_\_\_\_ By \_\_\_\_\_  
Monument found \_\_\_\_\_  
Monument set \_\_\_\_\_  
Reference Objects found \_\_\_\_\_

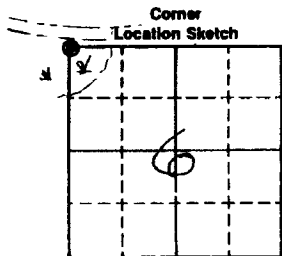
**Bearing Trees, Reference Objects**

Species \_\_\_\_\_  
Diameter \_\_\_\_\_  
Bearing \_\_\_\_\_  
Distance \_\_\_\_\_

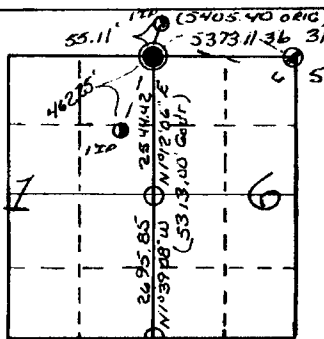
Signature Neal A. Halberg

Date July 12, 1995

RLS S-1322



Measurement Comparison Sketch



**Corner Perpetuation Record**

I find the following corner evidence. (If no evidence is found, use this space to describe re-establish procedure)

Monument found 2 1/2 BRASS CAPPED IRON PIPE

Reference objects found IT APPEARS THAT THE EXISTING MONUMENT HAS BEEN IN PLACE SINCE THE 1930'S. OVER THE YEARS IT HAS BEEN LOCALLY USED AND ACCEPTED. A RETRACEMENT SURVEY IN SEC 6, FINDS THE POSITION TO BE RELATIVELY COMPATIBLE WITH THE ORIGINAL SURVEY, WE ACCEPT POSITION AND SET AL MON 1/2 CAP ALONGSIDE FOUND MON.

I perpetuate this corner in the following manner.

Monument set 3/4 X 3/8 AL MON 1/2 3/4 DIA MKD. AL. CAP

Reference objects and description of corner area SET MON. ALONGSIDE 1/2 BRASS CAPPED IRON PIPE. PILED STONE AROUND BASE. FALLS IN SWAMP, SWLY. OF ROAD.  
1 X 24 IRON PIPE, N 29° 40' 10" E, 55.11  
9" TAM S 12° W, 16.13 X 1/2 CAP  
10" HEM, N 54° W, 23.65, X 1/2 CAP  
14" HEM, N 6° W, 32.56, X 1/2 CAP  
10" HEM, N 41° E, 21.10, X 1/2 CAP

Received of the Sawyer County Surveyor's Office this 12<sup>th</sup> day of July, 19 95, by

County Surveyor

Neal Halberg  
Deputy

**COPY**  
ORIGINAL CORNER  
CARDS ON FILE  
COUNTY SURVEYORS OFFICE

397  
396  
VOL. 9 P. 404