

Stock No. 26273

UNOFFICIAL COPY

Contact the Bayfield County Register of Deeds Office to obtain an official copy of this document.

#431
Notes: Absent
1-20-15-7

PLAT OF SURVEY

U.S. GOVERNMENT PROPERTY LINES

The north line of Sections 3 and 4, Township 45 North, Range 7 West and the East line of Section 29, Township 46 North, Range 7 West, Fourth Principal Meridian, COUNTY OF BAYFIELD, STATE OF WISCONSIN.



CSM# 000526

LEGEND

- Recovered 2" diameter iron pipe with a 3 inch brass tablet stamped to identify the corner.
- Corner monumented. Set a 2 inch inside diameter, 4 foot long, flanged bottom, aluminum pipe capped with a 3 inch aluminum tablet stamped to identify the corner.
- Line marked by blazed trees and iron sign posts set in line.
- Shoreline of lakes scaled from air photos.

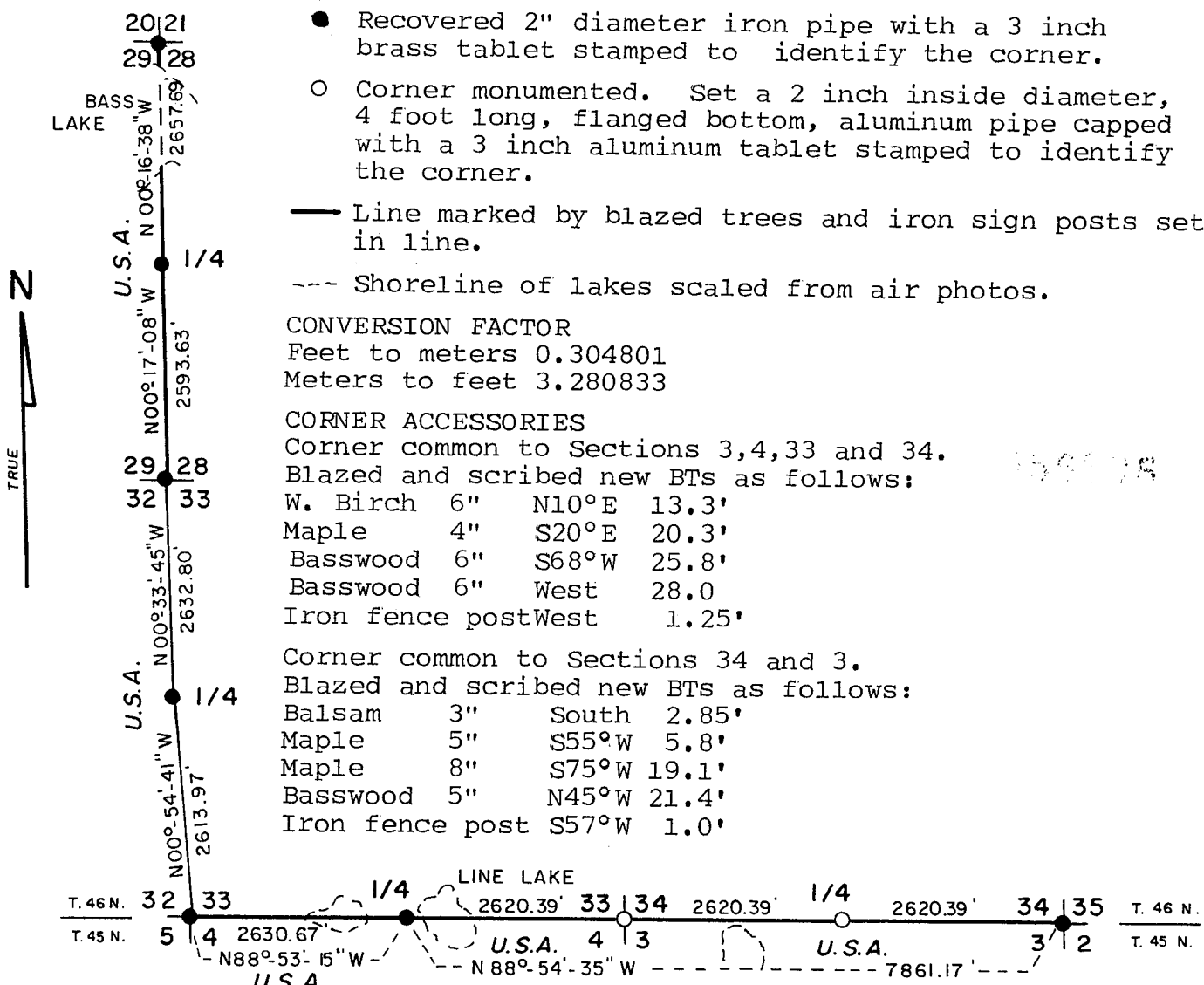
CONVERSION FACTOR
Feet to meters 0.304801
Meters to feet 3.280833

CORNER ACCESSORIES
Corner common to Sections 3,4,33 and 34.
Blazed and scribed new BTs as follows:

W. Birch	6"	N10°E	13.3'
Maple	4"	S20°E	20.3'
Basswood	6"	S68°W	25.8'
Basswood	6"	West	28.0'
Iron fence post	West		1.25'

Corner common to Sections 34 and 3.
Blazed and scribed new BTs as follows:

Balsam	3"	South	2.85'
Maple	5"	S55°W	5.8'
Maple	8"	S75°W	19.1'
Basswood	5"	N45°W	21.4'
Iron fence post	S57°W		1.0'



NOTE: The corner common to Sections 3,4,33 and 34 and the corner common to Sections 3 and 34 were set on the straight line between the north 1/4 corner of Section 4 and the northeast corner of Section 3 by single proportion.

STATE OF WISCONSIN)
COUNTY OF BAYFIELD) SS

I, Larry T. Nelson, registered land surveyor, hereby certify; That I have made a survey of the section lines shown on this plat in accordance with the rules for the subdivision survey of the public lands; and that this plat map is a correct representation of the method used and of the location of monuments and accessories as established and described to perpetuate the location of the corners set.

Larry T. Nelson
Larry T. Nelson
Wisconsin Registered Land Surveyor
Certificate No. S-1276

Aug 17, 1984
Date

NORTH LINE Section 3+4-45-7 East Line 29-46-7