

# UNOFFICIAL COPY

This document has not been recorded with the Bayfield County Register of Deeds Office.

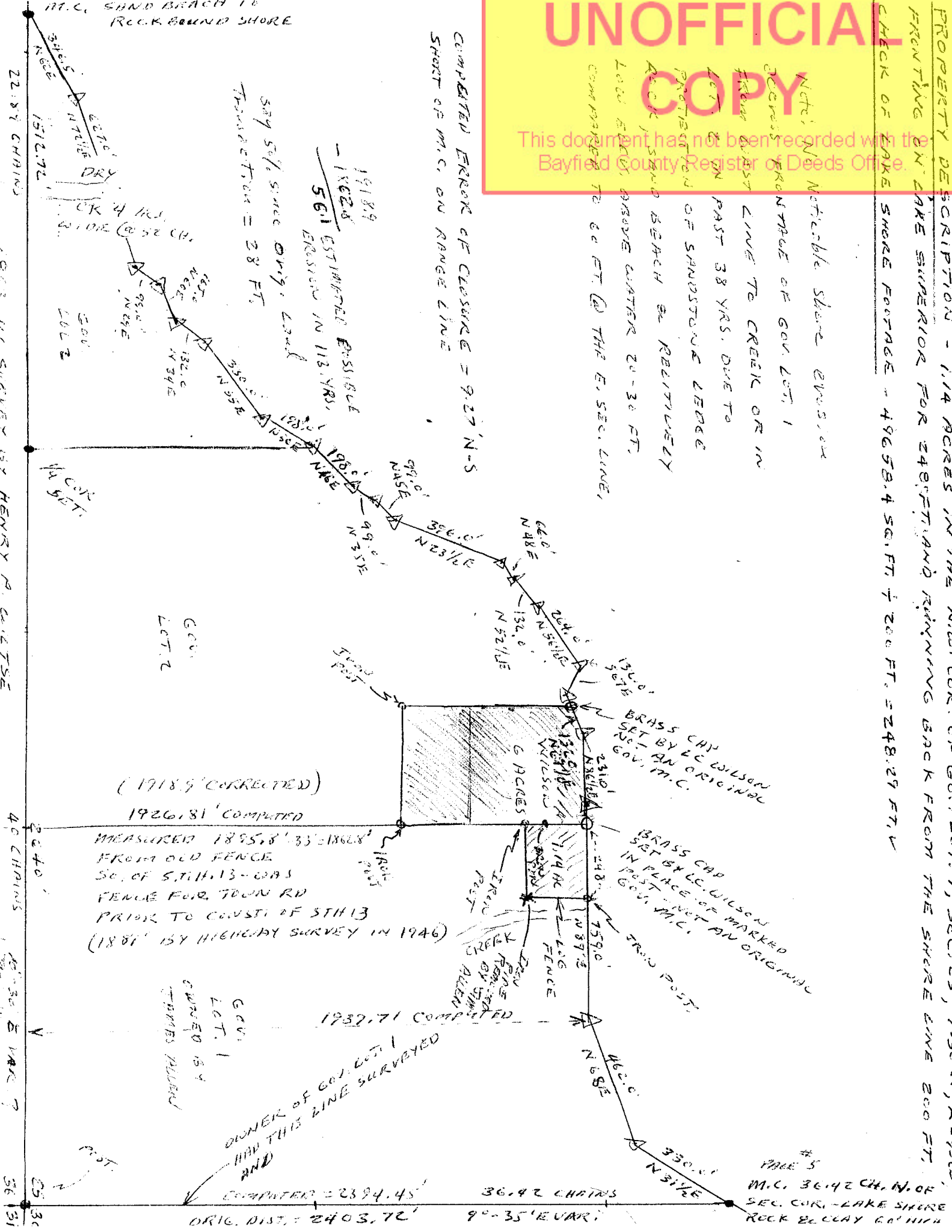
PROPERTY DESCRIPTION - 1.14 ACRES IN THE NW COR. OF GOV. LOT 1, SEC. 25, T-50 N, R-9 W, CONTAINING ON LAKE SUPERIOR FOR 248 FT. AND RUNNING BACK FROM THE SHORE LINE 200 FT. CHECK OF LAKE SHORE FOOTAGE - 49658.4 SQ. FT. ± 200 FT. = 248.29 FT. ±

Notes: Noticeable shore erosion OCCURRED FROM FRONTRIDGE OF GOV. LOT 1 FROM QUART LINE TO CREEK OR IN PAST 38 YRS. DUE TO PROTECTION OF SANDSTONE LEDGE ROCK, SAND BEACH & RELATIVELY LOW LEVEL, ABOVE WATER 20-30 FT. COMPARED TO 60 FT @ THE E. SEC. LINE,

COMPUTED ERROR OF CLOSURE = 9.27' N-S SHORT OF M.C. ON RANGE LINE

1918.9  
- 1862.4  
56.1  
ESTIMATED POSSIBLE EROSION IN 113 YRS.

589 5/8" since orig. could  
Translation = 28 FT



(1918.9 CORRECTED)  
1926.81 COMPLETED  
MEASURED 1895.8' ± 33' = 1862.8'  
FROM OLD FENCE  
SO. OF S.T.H. 13 - WAS  
FENCE FOR TOWN RD  
PRIOR TO CONSTRUCTION OF S.T.H. 13  
(1881' BY HIGHWAY SURVEY IN 1946)

GOV. LOT 1  
COVERED BY  
STAMPED MATERIAL

1932.71 COMPLETED  
OWNER OF GOV. LOT 1  
HAD THIS LINE SURVEYED

COMPUTED = 2394.45'  
ORIG. DIST. = 2403.72'

36.92 CHAINS  
9°-35' E VAR.

PAGE #  
PAGE 5  
M.C. 36.42 CH. N. OF  
SEC. COR. - LAKE SHORE  
ROCK & CLAY GO. HIGH