



Stock No. 26273

4406310000

VOL. 3 OF LCR PAGE 25-  
Otto Korpela 28  
REGISTER OF DEEDS

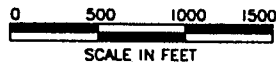
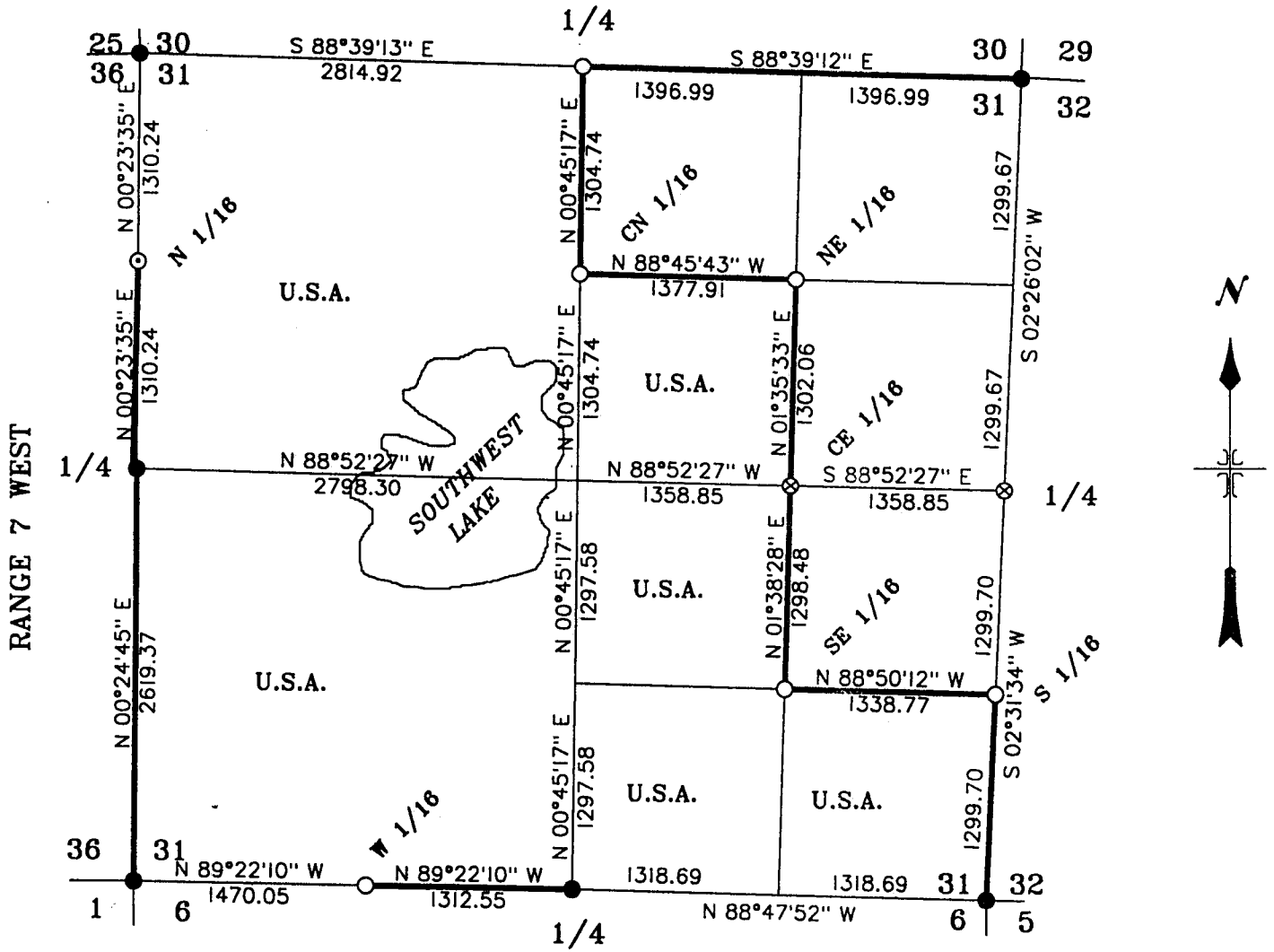
427816

'96 JUL 8 PM 1 17

REGISTER'S OFFICE/S.S.  
BAYFIELD COUNTY, WIS.

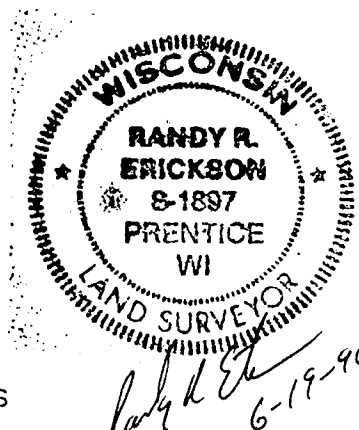
# PLAT OF SURVEY

U.S.A. LANDS BEING THE SOUTHEAST 1/4, SOUTHEAST 1/4, SOUTHWEST 1/4 NORTHEAST 1/4, WEST 1/2 SOUTHEAST 1/4, AND WEST 1/2 OF SECTION 31, TOWNSHIP 44 NORTH, RANGE 6 WEST, 4TH P.M., BAYFIELD COUNTY, WISCONSIN.



### LEGEND

- RECOVERED EXISTING MONUMENT TO FOREST SERVICE SPECS.
- SET A 2" x 36" ALUMINUM PIPE MONUMENT
- SET A 3/4" x 60" ALUMINUM ROD WITH W/ 3 1/4" ALUMINUM CAP
- ⊙ SET A 1/2" x 24" IRON REBAR W/ ALUMINUM REFERENCE MONUMENTS
- LINE MARKED TO FOREST SERVICE SPECIFICATIONS.



25



Stock No. 26273

## SURVEY NOTES SECTION 31, T44N, R6W

THIS SURVEY WAS MADE BY THE U.S.D.A. FOREST SERVICE AT THE REQUEST OF THE HAYWARD/GLIDDEN DISTRICT RANGER FOR THE PURPOSE OF RECOVERING, MARKING, AND PERPETUATING THE CORNERS OF U.S. GOVERNMENT LANDS ON THE PERIMETER AND WITHIN SECTION 31, TOWNSHIP 44 NORTH, RANGE 6 WEST, 4TH P.M., BAYFIELD COUNTY, WISCONSIN.

THE ORIGINAL GOVERNMENT SURVEY OF THE TOWNSHIP LINES WAS MADE IN 1857 BY DEPUTY SURVEYOR ALBERT STUNTZ. THE ORIGINAL SUBDIVISION OF THE TOWNSHIP WAS DONE BY DEPUTY SURVEYOR DANIEL NORTON IN 1859. SURVEYOR JOHN FORSS RETRACED THE WEST LINE OF SECTION OF SECTION 31 IN 1916. RLS # 263 THOMAS NELSON RETRACED THE EAST AND SOUTH LINES OF SECTION 31, 1958-1960. RLS # 1029 DUANE MARTEN SUBDIVIDED SECTION 31 IN 1982 AND MARKED THE CORNERS OF THE NE 1/4 NE 1/4. MEASUREMENTS FROM THE 1982 SURVEY MATCH CLOSELY WITH THIS CURRENT SURVEY.

THE BASIS OF BEARING FOR THIS SURVEY IS TRUE AS DETERMINED BY A SOLAR OBSERVATION ALONG A LEG OF THE CONTROL TRAVERSE NEAR THE NORTH 1/16 LINE OF SECTION 31.

ALL TRAVERSE LOOPS WERE COMPLETED USING AN ELECTRONIC TOTAL STATION INSTRUMENT WITH AN ELECTRONIC DATA COLLECTOR. ALL TRAVERSE LOOPS HAD AN ERROR OF CLOSURE RATIO BETTER THAN 1:5000.

NO ENCROACHMENT OF SIGNIFICANCE WERE FOUND DURING THIS SURVEY. SURVEY WAS DONE DURING DECEMBER 1995 AND JANUARY 1996.

## CORNERS RECOVERED

1. TOWNSHIP CORNER TOWNS 43 AND 44 NORTH, RANGES 6 AND 7 WEST. RECOVERED IRON PIPE MONUMENT SET BY JOHN FORSS IN 1915 ALONG WITH CEDAR BT N47E DOWN AND DECAYING. OLD WHITE WOOD POST SOUTH 1.4 FEET. MONUMENT IS A 3" x 36" IRON PIPE WITH IRON CAP STAMPED TO IDENTIFY THE CORNER. MONUMENT EXTENDS 1 FOOT ABOVE GROUND. MARKED NEW BEARING TREES:
 

MAPLE	5"	N 40 W	31.62 FT
MAPLE	10"	N 40 E	25.02 FT
ASH	10"	N 30 E	49.77 FT
STEEL SIGN POST		NORTH	1.4 FT
2. SOUTH ONE QUARTER CORNER SECTION 31, T 44 N, R 6 W. RECOVERED MONUMENT AS DESCRIBED ON CERTIFIED LAND CORNER RESTORATION FORM, INDEX NO. Z-3, U.S.F.S. RECORDS. PREPARED BY RLS # 263 IN 1960. 1960 BEARING TREES ARE GONE. MARKED NEW BEARING TREES:
 

BALSAM	4"	S 04 W	37.02 FT
BALSAM	3"	S 88 W	33.58 FT
RED PINE	2"	N 03 W	25.08 FT
STEEL SIGN POST		WEST	0.7 FT
3. SOUTHEAST CORNER OF SECTION 31, T44N, R6W. RECOVERED MONUMENT AS DESCRIBED ON CERTIFIED LAND CORNER RESTORATION FORM, INDEX NO. Z-5, U.S.F.S. RECORDS. PREPARED BY RLS # 263 IN 1960. 1960 BEARING TREES ARE GONE. MARKED NEW BEARING TREES:
 

W.PINE	9"	N 88 E	42.77 FT
MAPLE	7"	S 12 E	6.06 FT
W.PINE	18"	N 18 E	8.71 FT
4. ONE QUARTER CORNER COMMON TO SECTIONS 31 AND 32, T44N, R 6W. RECOVERED A 2" x 2" IRON PIPE OF UNKNOWN ORIGIN, SET ABOUT 10-15 YEAR AGO. ACCEPTED PIPE AS CORNER POSITION BECAUSE OF IT'S PROXIMITY TO THE ACTUAL PROPORTIONATE POINT BETWEEN THE SECTION CORNERS. DROVE A 3/4" x 60" ALUMINUM ROD WITH A 3 1/4" ALUMINUM CAP, STAMPED TO IDENTIFY THE CORNER, INSIDE THE 2" PIPE. NEW MONUMENT EXTENDS 9" ABOVE THE SWAMP. MARKED NEW BEARING TREES:
 

TAMARACK	6"	N 85 E	40.04 FT
SPRUCE	4"	N 11 W	15.77 FT
SPRUCE	4"	S 42 W	12.76 FT
STEEL SIGN POST		NORTH	0.5 FT



Stock No. 26273

5. CORNER TO SECTION 29-30-31-32, T 44 N, R 6 W.  
RECOVERED MONUMENT AS DESCRIBED ON CERTIFIED LAND CORNER RESTORATION FORM, INDEX NO. V-5, U.S.F.S. RECORDS. PREPARED BY RLS # 263 IN 1960. W.PINE BT S 7 E 80.2 FEET IS GONE OTHER BTs ARE GOOD. MONUMENT BENT OVER FROM SNOW PLOW, REPLACED IT WITH A 2" x 36" ALUMINUM PIPE MONUMENT WITH AN ALUMINUM CAP STAMPED TO IDENTIFY THE CORNER, SET FLUSH WITH GROUND. ALSO SET A STEEL SIGN POST ON NORTH EDGE OF MONUMENT.
6. NORTHWEST CORNER SECTION 31, T 44 N, R 6 W.  
RECOVERED MONUMENT AS DESCRIBED ON DOCUMENT # 269963, PAGE 287, VOLUME 1, CSMs, BAYFIELD COUNTY RECORDS. PREPARED IN 1970 BY RLS # 785. JACK PINE BEARING TREES GONE FROM 1970. MARKED 2 NEW BEARING TREES:  
MAPLE 4" S 03 W 10.60 FT  
MAPLE 3" N 79 E 17.99 FT
7. WEST QUARTER CORNER SECTION 31, T 44 N, R 6 W.  
RECOVERED MONUMENT AS DESCRIBED ON DOCUMENT # 269965, PAGE 287, VOLUME 1 OF CSMs, BAYFIELD COUNTY RECORDS, PREPARED IN 1970 BY RLS # 785.

## CORNERS RESTORED

1. ONE QUARTER CORNER TO SECTIONS 30 AND 31, T 44 N, R 6 W.  
RESTORED CORNER BY SINGLE PROPORTIONATE MEASURE BETWEEN THE NORTHEAST CORNER AND NORTHWEST CORNER OF SECTION 31. SET A 2" x 36" ALUMINUM PIPE MONUMENT WITH AN ALUMINUM CAP STAMPED TO IDENTIFY THE CORNER. MARKED BEARING TREES:  
MAPLE 3" N 30 W 13.14 FT  
RED PINE 8" S 82 E 10.47 FT  
RED PINE 8" S 61 W 19.50 FT  
STEEL SIGN POST EAST 0.5 FT

## CORNERS ESTABLISHED

1. NORTH 1/16 CORNER SEC. 31 T44N, R6W AND SEC. 36 T44N, R7W.  
ESTABLISHED CORNER AT MID POINT ON LINE BETWEEN THE WEST 1/4 CORNER AND NORTHWEST CORNER OF SECTION 31. SET A 1/2" x 25" IRON REBAR 6" BELOW ROAD SURFACE. CORNER FALLS 3 FEET NORTH OF FOREST ROAD #212 CENTERLINE. SET TWO REFERENCE MONUMENTS: 2" x 36" ALUMINUM PIPE MONUMENTS WITH ALUMINUM CAPS STAMPED TO IDENTIFY EACH R.M. MARKED BEARING TREE:  
MAPLE 4" S 19 W 78.39 FT  
REFERENCE MONUMENT #1 S 32 E 48.90 FT  
REFERENCE MONUMENT #2 N 24 E 38.21 FT  
SET STEEL SIGN POST ALONG SIDE OF EACH REFERENCE MONUMENT.
2. WEST 1/16 CORNER SEC. 31, T44N, R6W AND SEC. 6, T43N, R6W.  
ESTABLISHED CORNER BY SINGLE PROPORTIONATE MEASURE BETWEEN THE SOUTH QUARTER CORNER AND SOUTHWEST CORNER OF SECTION 31. SET A 2" x 36" ALUMINUM PIPE MONUMENT WITH AN ALUMINUM CAP STAMPED TO IDENTIFY THE CORNER. MONUMENT EXTENDS 4" ABOVE THE GROUND. MARKED BEARING TREES:  
ASPEN 4" N 73 E 5.50 FT (BARK SCRIBED)  
BALSAM 3" S 83 W 8.98 FT (BARK SCRIBED)  
SPRUCE 11" S 76 E 15.72 FT  
STEEL SIGN POST EAST 0.3 FT
3. SOUTH 1/16 CORNER TO SECTIONS 31 AND 32, T 44 N, R 6 W.  
ESTABLISHED CORNER AT MID POINT ON LINE BETWEEN THE EAST QUARTER CORNER AND SOUTHEAST CORNER OF SECTION 31. SET A 2" x 36" ALUMINUM PIPE MONUMENT WITH AN ALUMINUM CAP STAMPED TO IDENTIFY THE CORNER. MONUMENT EXTENDS 8" ABOVE GROUND AND IS 28 FEET WEST OF ROAD CENTERLINE. PIPE FROM 1989 SURVEY IS ON SOUTH SIDE OF NEW MONUMENT. MARKED BTS:  
MAPLE 5" S 08 W 61.64 FT  
MAPLE 4" N 70 W 22.08 FT  
W.PINE 7" N 36 W 16.85 FT  
STEEL SIGN POST SOUTH 0.6 FT  
PLANTATION POST NORTH 17 FEET

27



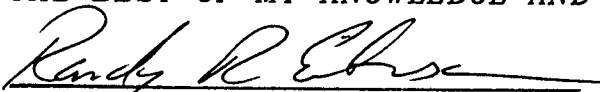
Stock No. 26273

4. SOUTHEAST 1/16 CORNER SECTION 31, T 44 N, R 6 W.  
ESTABLISHED CORNER AT THE INTERSECTION OF STRAIGHT LINES BETWEEN OPPOSING 1/16 CORNERS ON THE PERIMETER OF THE SOUTHEAST QUARTER OF SECTION 31. SET A 2" x 36" ALUMINUM PIPE MONUMENT WITH AN ALUMINUM CAP STAMPED TO IDENTIFY THE CORNER. MONUMENT EXTENDS 3" ABOVE THE GROUND. MARKED BTs:
- |                      |    |        |          |
|----------------------|----|--------|----------|
| MAPLE                | 4" | S 70 W | 31.44 FT |
| MAPLE                | 7" | N 01 W | 65.50 FT |
| MAPLE                | 3" | S 71 E | 16.85 FT |
| STEEL SIGN POST EAST |    |        | 1.8 FT   |
5. CENTER-EAST ONE SIXTEENTH CORNER SECTION 31, T 44 N, R 6 W.  
ESTABLISHED CORNER MID POINT ON LINE BETWEEN THE CENTER QUARTER AND EAST QUARTER CORNER OF SECTION 31. DROVE A 3/4" x 60" SOLID ALUMINUM ROD WITH A 3 1/4" ALUMINUM CAP STAMPED TO IDENTIFY THE CORNER. MONUMENT EXTENDS 8" ABOVE THE SWAMP. MARKED BEARING TREES:
- |                       |    |        |          |
|-----------------------|----|--------|----------|
| MAPLE                 | 3" | N 20 W | 31.19 FT |
| MAPLE                 | 4" | N 87 E | 54.51 FT |
| W.PINE                | 4" | N 60 E | 61.68 FT |
| STEEL SIGN POST NORTH |    |        | 0.7 FT   |
6. NORTHEAST ONE-SIXTEENTH CORNER SECTION 31, T 44 N, R 6 W.  
ESTABLISHED CORNER AT THE INTERSECTION OF STRAIGHT LINES BETWEEN OPPOSING 1/16 CORNERS ON THE PERIMETER OF THE NORTHEAST QUARTER OF SECTION 31. SET 2" x 36" ALUMINUM PIPE MONUMENT WITH AN ALUMINUM CAP STAMPED TO IDENTIFY THE CORNER. MONUMENT SET 11" BELOW SURFACE OF SHOULDER 17 FEET SOUTH OF THE CENTERLINE OF FOREST ROAD # 212. MARKED BTs:
- |          |     |        |                         |
|----------|-----|--------|-------------------------|
| W. PINE  | 3"  | S 08 E | 38.17 FT (BARK SCRIBED) |
| RED PINE | 11" | S 61 W | 48.84 FT                |
| RED PINE | 6"  | N 06 E | 59.41 FT                |
- BRUSHED AND POSTED LINE RUNS SOUTH FROM CORNER.
7. CENTER NORTH ONE SIXTEENTH CORNER SECTION 31, T 44 N, R 6 W.  
ESTABLISHED CORNER AT MID POINT ON LINE BETWEEN THE CENTER QUARTER CORNER AND NORTH QUARTER CORNER OF SECTION 31. SET A 2" x 24" ALUMINUM PIPE MONUMENT WITH AN ALUMINUM CAP STAMPED TO IDENTIFY THE CORNER. MONUMENT SET 6" BELOW SURFACE OF SOUTH EDGE OF FOREST ROAD # 212. MARKED BTs:
- |          |     |        |          |
|----------|-----|--------|----------|
| RED PINE | 12" | N 31 W | 88.05 FT |
| RED PINE | 11" | N 01 E | 78.74 FT |
| OAK      | 13" | N 28 E | 94.04 FT |

## SURVEYORS AFFIDAVIT

STATE OF WISCONSIN)  
COUNTY OF BAYFIELD)SS

I RANDY R. ERICKSON, LAND SURVEYOR FOR THE U.S.D.A. FOREST SERVICE AND A REGISTERED LAND SURVEYOR IN THE STATE OF WISCONSIN, DO HEREBY CERTIFY THAT I HAVE SURVEYED AND SUBDIVIDED SECTION 31, TOWNSHIP 44 NORTH, RANGE 6 WEST, 4TH P.M., BAYFIELD COUNTY, WISCONSIN. DURING THIS SURVEY I HAVE COMPLIED WITH THE RULES FOR THE SURVEY OF PUBLIC LANDS AND STATUTES OF THE STATE OF WISCONSIN CONCERNING SURVEYS. THE PLAT OF SURVEY AND ACCOMPANYING NOTES ARE A CORRECT AND ACCURATE REPRESENTATION OF THE SURVEY TO THE BEST OF MY KNOWLEDGE AND BELIEF.

  
RANDY R. ERICKSON  
WISCONSIN REGISTERED LAND SURVEYOR  
#1897

6-19-96  
DATE

CREW MEMBERS:  
RANDY ERICKSON LAND SURVEYOR  
GREG MAYER INSTRUMENT  
BRIAN BOEHM TARGET AND AXE

