

21-44.9

Delaney Land Can Chase Lake

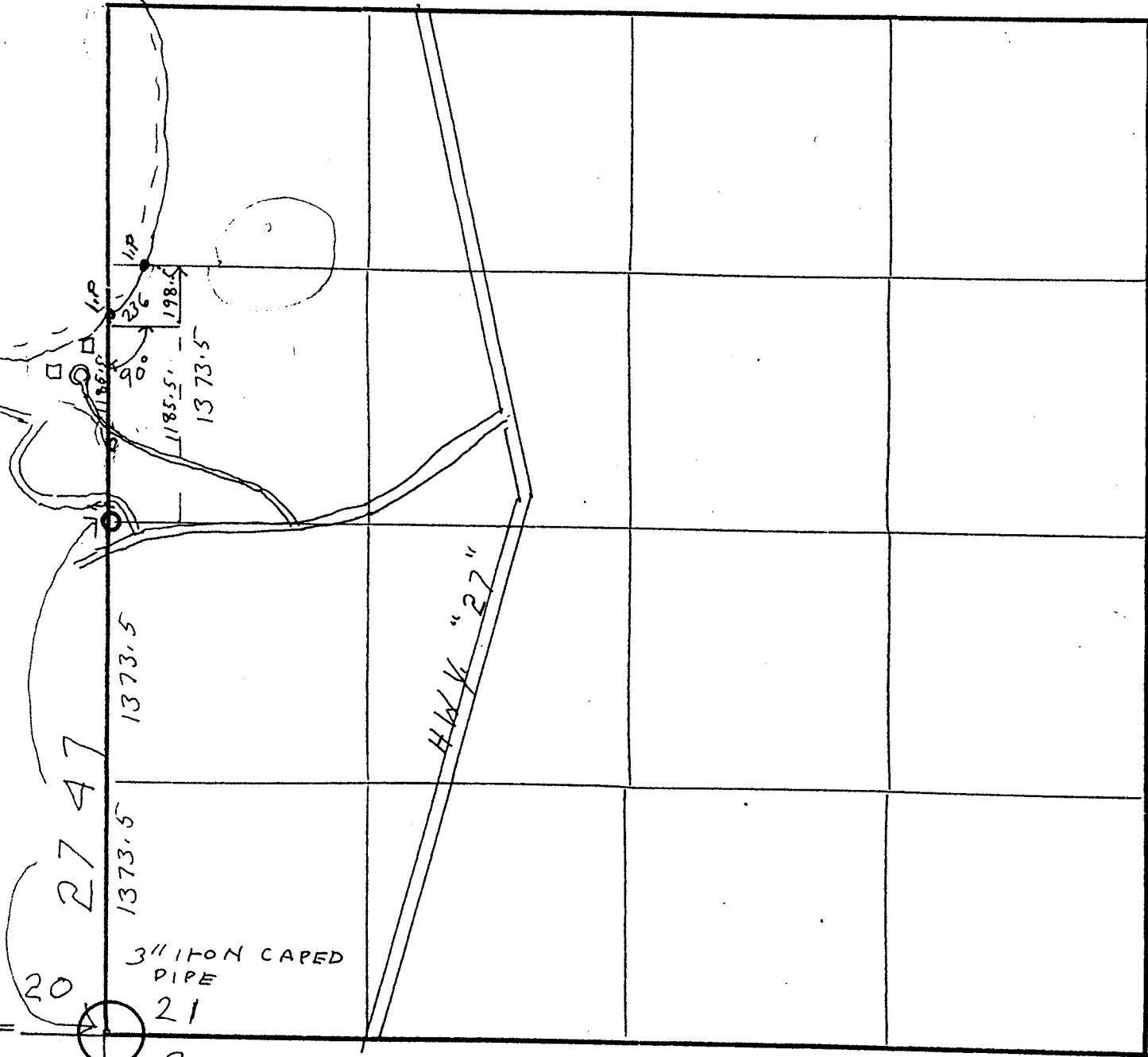
Record of Survey

UNOFFICIAL COPY
This document has not been recorded with the Bayfield County Register of Deeds Office.

Township 44, North of Range 9 of 4 Principal Meridian as presented by the courses and distances on the following plat, and annexed field-notes of survey:

- Established the center of the section at the point of intersection of straight quarter lines.
- Established all quarter-quarter corners upon the section boundary at proportional distances between known section and quarter section corners, according to the original field-notes of the Government survey.
- Established all lost corners at proportionate distances between known corners, according to the original field-notes of the Government survey.

Oral



Plat of Section 21, Township 44N North, Range 9 of 4 Principal Meridian Scale 80 chains to 6 inches. The figures in red ink are the lengths of the lines as stated in the field-notes of the Government survey.

Declination of the Magnetic Meridian from the True Meridian _____
Surveyed and sub-divided _____ A. D. 19 _____, in accordance with the State Laws and Instructions of the Commissioner of the General Land office, and recorded on pages _____ of the Register in the County Clerk's office.

WITNESS my hand this _____ day of Nov. 15, A. D. 19 61

William J. Labe Surveyor

4488