

CORNER NUMBER

4 5 0 6 3 6 0 0 0 0  
T. R. Sec. Row Col.

R9-5680-5 (7/15/64) H. C. MILLER CO., MILW.

CERTIFIED LAND CORNER RESTORATION

RECORDED AT 11:50 A.M.

ON MAR 31 1965 IN  
Vol. 1 of 511 Page 188

State of Wisconsin }  
County of Bayfield } ss.

*Earl Pederson*  
REGISTER OF DEEDS

I Elwood L. Olson, do hereby certify that on the 27th day of October, 1964, I found evidence of the Section (Township) corner of Sections 1-6-31-36 Township 44 and 45 North, Range 5 and 6 West, Fourth Principal Meridian, as described hereon; and that from this evidence I established a new monument and accessories as described hereon to perpetuate the original location of this corner:

Description of original monument and accessories and subsequent restorations:

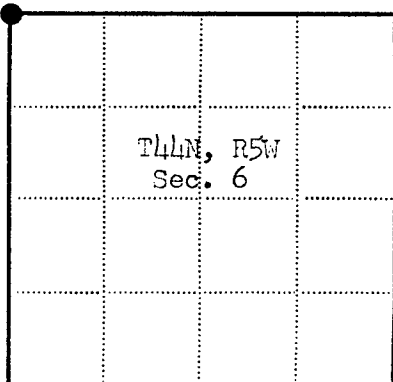
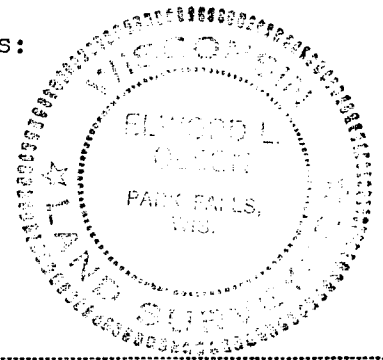
Original corner established in 1857 From notes of Jerod W. Day, Surveyor, as copied by  
by Albert C. Stuntz, Government Day from notes of Wm. H. Nettleton.  
Deputy Surveyor. Set iron pipe. Falls in the center of the road.  
Sugar 12 N56W 32 links.  
Linden 10 S45W 28 links.  
Hemlock 9 S65E 110 links.  
" 10 N72E 24 links.

Description of corner evidence found:

Found iron pipe set by Nettleton 2" under road surface, tipped over (hit by grader). Pipe is 3 inch dia., 36 inches long galvanized iron pipe with 5 inch dia. galvanized iron cap stamped: T44N, R6W, S1, T44N, R5W, S6, S, 31. The corner is in road running E. and W. and 4 feet N. of center of road. I determine the upright position of the monument and reset same with top 8 inches below road surface. A squared white wood witness post bears S0°30'W, 23.95 feet from monument.

Description of monument and accessories I established to perpetuate the original location of this corner:

I establish a reference monument to section corner; set 2" inside dia., 5' long, flanged bottom, concrete filled, galvanized wrought iron pipe with 3" bronze tablet stamped: REFERENCE MONUMENT, T45N, R5W, R6W, S1, S6, S31, S36, T44N, SOUTH, 40.95 FT., S.785, 1964. Monument extends 18" above ground and is surrounded by mound of stone. Thence from section corner reference monument bears North, 40.95 feet.  
Blazed and scribed new bearing trees to section corner as follows:  
Maple 7" S31°W, 58.6 feet.  
Maple 5" S34°E, 60.2 feet.  
Nail metal BT sign on both BTs. Paint BTs red.



● = Corner monument restored  
□ =

Resident witnesses.....

Dated at Park Falls Wisconsin, this 29th day of December, 1964.

Signature Elwood L. Olson Title Registered Land Surveyor  
(County Surveyor, Registered Land Surveyor, or other duly authorized official)

Surveyors Registration No. S-785

Office of..... County of.....

I hereby certify that the within instrument was filed in this office for record on the..... day of..... 19....., and was filed in Book No..... Page No..... of County Records.

Signature..... Title.....

Township....., Range....., Section....., Index No....., Page No.....

158

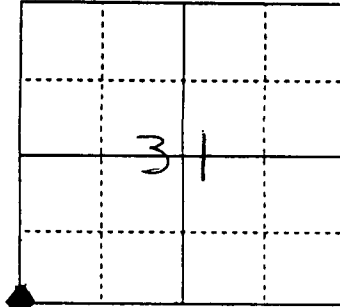
4	5	0	6	3	6	0	0	0	0
T	R	SEC	ROW	COL					

## Survey Corner Information Form

Note: This form does not fulfill the requirements of Wisconsin Administrative Code A-E 7.08. It is intended to identify possible PLSS corners discovered by Groeschl Forestry Consulting Inc. (GFC) during the performance of customary field work. This information is recorded to facilitate further investigation by registered land surveyors.

(A) Identify the possible corner by reference to the US Public Land Survey System.

Possible Corner SW  
 Section 31  
 T 45 N  
 R 5 W or E  
 Town/City/Village Lincoln  
 County Bayfield Wisconsin



◆ denotes possible PLSS monument.

(B) Describe the discovered monument and any other material evidence encountered.

Stamped survey monument, about 4" below ground about 4' ~~south~~ north of E of FR 377 (Camp 8).  
 Wood witness post on south side of road and stamped iron w.c. north of corner about 41'.

(C) Complete the approximate coordinate information assigned to the possible PLSS corner.

Northing	<u>46° 19' 40.23867" N</u>	Date	<u>10/04/01</u>
Easting	<u>91° 02' 55.95964" W</u>	Instrument	<u>Trimble PPro XRS</u>
Altitude	<u>1206.83 ft.</u>	Est. Accuracy	<u>± 2.375 us ft. @ 95% CI</u>
Projection	<u>Lat./Lon.</u>	Name	<u>GFC, Inc.</u>
Datum	<u>WGS 1984</u>		



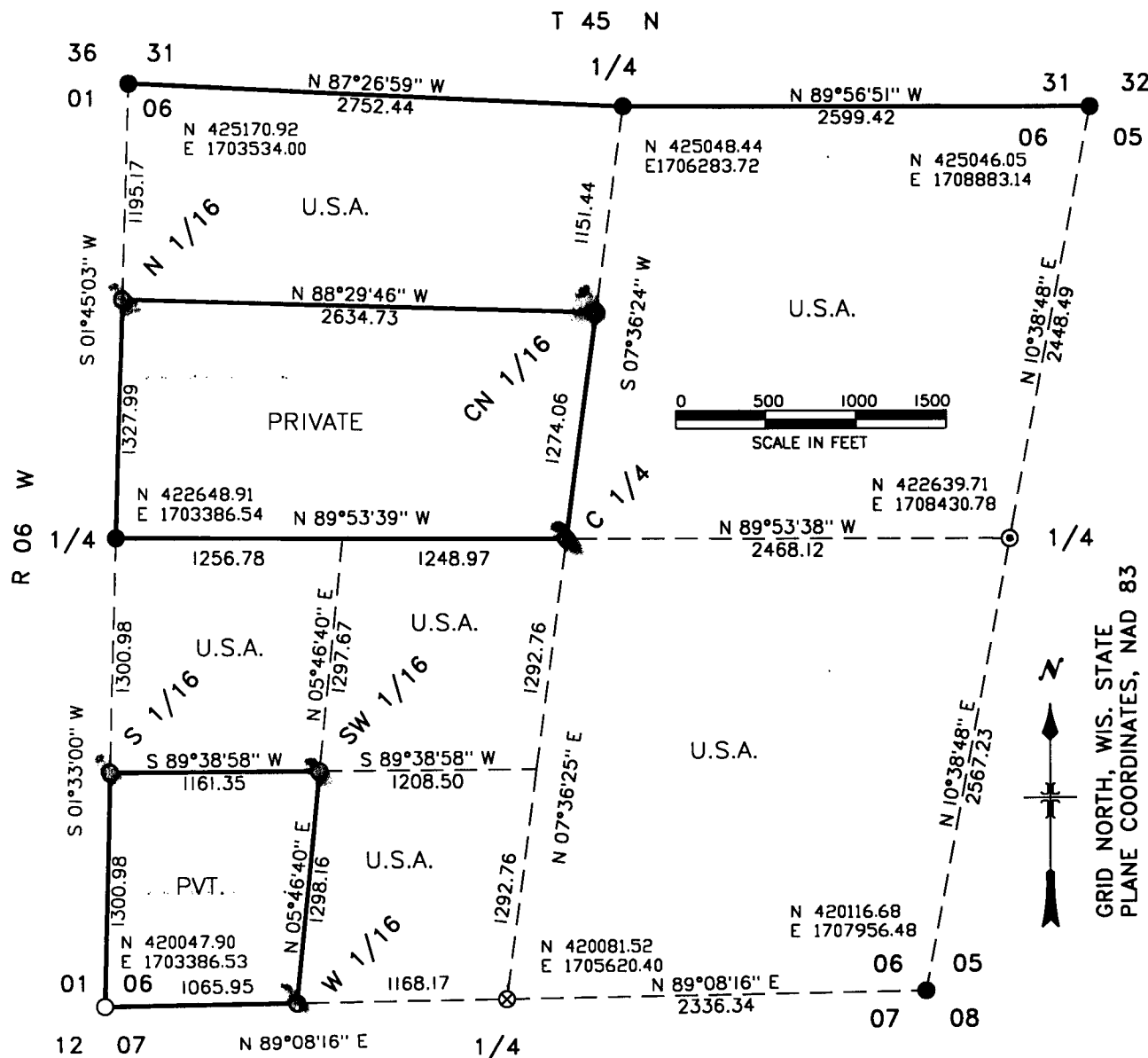
Stock No. 26273

CORNER NUMBER

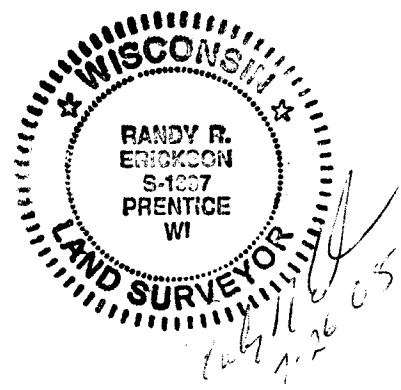
4506360000  
T R SEC ROW COL

MAP OF SURVEY

U.S. GOVERNMENT LANDS BEING THE EAST 1/2, THE NORTH 1/2 NW 1/4, THE EAST 1/2 SW 1/4 AND THE NW 1/4 SW 1/4, OF SECTION 06, T 44 N, R 05 W, TOWN OF GRAND VIEW, BAYFIELD COUNTY, WI.



- RECOVERED MONUMENT PREVIOUSLY PERPETUATED TO F.S. STANDARDS.
  - SET A 2" x 36" IRON PIPE WITH 3" BRASS CAP.
  - ⊗ SET A 1" x 36" ALUMINUM DRIVE MONUMENT WITH 2" ALUM. CAP.
  - ⊙ SET A 2" x 36" ALUMINUM PIPE MONUMENT WITH 3" ALUMINUM CAP.
  - LINE MARKED TO U.S.F.S. STANDARDS.
- (N 420081.52) WISCONSIN NORTH ZONE STATE PLANE COORDINATES.





Stock No. 26273

SURVEY NOTES  
SECTION 06, T 44 N, R 05 W

THIS SURVEY WAS MADE BY THE U.S.D.A. FOREST SERVICE AT THE REQUEST OF THE GREAT DIVIDE DISTRICT RANGER FOR THE PURPOSE OF RECOVERING, RESTORING, ESTABLISHING, MARKING AND PERPETUATING THE CORNERS AND BOUNDARIES OF U.S. GOVERNMENT LANDS ON THE PERIMETER AND WITHIN SECTION 6, T 44 N, R 05 W, GRAND VIEW TOWNSHIP, BAYFIELD COUNTY, WISCONSIN.

THE ORIGINAL GOVERNMENT SURVEY OF THE TOWNSHIP LINES WAS MADE IN 1857 BY ALBERT STUNTZ. THE INTERIOR SECTION LINES WERE SURVEYED IN 1858 BY DANIEL NORTON. THE NORTH LINE OF SECTION 6 WAS RETRACED IN 1964 BY ELWOOD OLSON, RLS #785.

THIS SURVEY WAS MADE USING REAL TIME KINEMATIC GPS. BAYFIELD COUNTY GPS STATION "TAYLOR LAKE" WAS USED AS THE BASE FOR THIS SURVEY. TRUE LINE TRAVERSES WERE RUN USING AN ELECTRONIC TOTAL STATION INSTRUMENT. ERROR OF CLOSURE BETWEEN GPS CONTROL POINTS WAS BETTER THAN 1:5000.

BEARING TREES WERE BLAZED, SCRIBED AND PAINTED WITH RED PAINT. MEASUREMENTS TO BEARING TREES ARE TO ALUMINUM NAILS IN THE SIDES OF THE TREES ABOVE THE CENTER OF THE ROOT CROWN.

ENCROACHMENTS ON NATIONAL FOREST LANDS INCLUDE TIMBER HARVESTING ALONG THE WEST LINE OF THE SE 1/4 SW 1/4, AND ALONG THE SOUTH LINE OF THE NORTH 1/2 NORTHWEST 1/4.

SURVEY WAS MADE IN MAY AND JUNE OF 2005.

SURVEY CREW: RANDY R. ERICKSON – LAND SURVEYOR; GREG MAYER – CREW CHIEF; TED SOMMMER – SAWYER.

CORNERS RECOVERED

1. NORTHWEST CORNER SECTION 6, T 44 N, R 05 W.  
RECOVERED MONUMENT AS RECORDED IN BAYFIELD COUNTY RECORDS:  
DATED 3-30-1965 BY RLS #785. BEARING TREES GOOD, REFERENCE  
MONUMENT GOOD.
2. NORTH QUARTER CORNER SECTION 6, T 44 N, R 05 W.  
RECOVERED MONUMENT AS RECORDED IN BAYFIELD COUNTY RECORDS:  
DATED 3-30-1965 BY RLS #785. BEARING TREES GOOD, SET STEEL  
SIGN POST EAST 1.2 FEET.
3. NORTHEAST CORNER SECTION 6, T 44 N, R 05 W.  
RECOVERED MONUMENT AS RECORDED IN BAYFIELD COUNTY RECORDS:  
DATED 3-30-1965 BY RLS #785. 1965 TAMARACK BEARING TREE  
S 41° W IS STILL ALIVE, NOW 15" DIAMETER. OTHER 2 TAMARACK  
BEARING TREES FROM 1965 ARE DEAD. MARKED NEW BEARING TREES  

MAPLE	9"	S 04° W	43.49 FEET
BALSAM	5"	S 70° E	26.78 FEET

 FOUND STEEL SIGN POST SET EAST 2.7 FEET BY F.S. EMPLOYEES.
4. WEST QUARTER CORNER, SECTION 6, T 44 N, R 05 W.  
RECOVERED MONUMENT AS RECORDED IN BAYFIELD COUNTY RECORDS:  
DATED 3-30-1965 BY RLS #785. BEARING TREES ALL GOOD.  
SET A STEEL SIGN POST EAST 1.4 FEET.
5. SOUTHEAST CORNER SECTION 6, T 44 N, R 05 W.  
RECOVERED MONUMENT AS DESCRIBED ON DOCUMENT #320346, VOL.1,  
PAGE 253, CERTIFIED LAND CORNER RESTORATION BOOK, BAYFIELD  
COUNTY RECORDS, FILED IN 1978 BY RLS #785. 1978 MAPLE  
BEARING TREES, N 16° W AND S 30° W ARE DEAD. MAPLE BT  
S 43° E IS NOW 11" DIAMETER. MARKED NEW BEARING TREES:  

ASH	10"	N 65° W	29.33 FEET
MAPLE	9"	N 05° W	24.01 FEET



Stock No. 26273

6. SOUTHWEST CORNER OF SECTION 7, T 44 N, R 05 W.  
RECOVERED MONUMENT AS RECORDED BY RLS #785 IN 1962, FILED IN  
BAYFIELD COUNTY RECORDS. 1962 OAK BTS BOTH GOOD.  
CHISELED CROSS ON BOULDER, GOOD. SET A STEEL SIGN POST  
SOUTH 1.0 FEET.

## CORNERS RESTORED

1. EAST QUARTER CORNER SECTION 6, T 44 N, R 05 W.  
RESTORED CORNER BY SINGLE PROPORTIONATE MEASURE BETWEEN THE  
NORTHEAST AND SOUTHEAST CORNER OF SECTION 6. SET A 2" x 36"  
ALUMINUM PIPE MONUMENT WITH A 3" ALUMINUM CAP STAMPED TO  
IDENTIFY THE CORNER. MONUMENT EXTENDS 4" ABOVE THE GROUND.  
SET STEEL SIGN POST EAST 0.6 FEET  
CHISELED AND PAINTED "X" ON LARGE ROCKS:
- |                          |         |            |
|--------------------------|---------|------------|
| 4'x 3' x 2' ABOVE GROUND | N 07° W | 104.40 FT. |
| 2'x 2' x .5' "           | N 54° W | 123.21 FT. |
| 2'x 1.5'x .75' "         | N 78° W | 58.00 FT.  |
2. SOUTHWEST CORNER SECTION 6, T 44 N, R 05 W.  
RESTORED CORNER BY SINGLE PROPORTIONATE MEASURE BETWEEN THE  
SOUTHWEST CORNER OF SECTION 7 AND THE WEST 1/4 CORNER OF  
SECTION 6. SET A 2" x 36" IRON PIPE WITH A 3" BRASS CAP  
STAMPED TO IDENTIFY THE CORNER. MONUMENT EXTENDS 4" ABOVE  
GROUND IN MOUND OF STONE. MARKED BEARING TREES:
- |                 |         |            |
|-----------------|---------|------------|
| MAPLE 11"       | S 70° W | 30.83 FEET |
| MAPLE 7"        | S 41° W | 23.12 FEET |
| DBL MAPLE 9"    | N 31° W | 17.49 FEET |
| STEEL SIGN POST | NORTH   | 0.7 FEET   |
3. SOUTH QUARTER CORNER SECTION 6, T 44 N, R 05 W.  
RESTORED CORNER BY SINGLE PROPORTIONATE MEASURE BETWEEN THE  
SOUTHEAST AND SOUTHWEST CORNERS OF SECTION 6 SET A 1" x 36"  
ALUMINUM DRIVE MONUMENT WITH A 2" ALUMINUM CAP STAMPED TO  
IDENTIFY THE CORNER. MONUMENT EXTENDS 6" ABOVE GROUND.  
MARKED BEARING TREES:
- |                 |         |            |
|-----------------|---------|------------|
| WHITE ASH 5"    | N 80° E | 22.88 FEET |
| WHITE ASH 4"    | N 28° E | 16.57 FEET |
| WHITE ASH 6"    | S 16° W | 24.85 FEET |
| STEEL SIGN POST | EAST    | 0.5 FEET   |
- SMALL WATER HOLE 20 FEET NORTH.

~~1~~ CORNERS ESTABLISHED

1. NORTH 1/16 CORNER, WEST LINE OF SECTION 6, T 44 N, R 05 W.  
ESTABLISHED CORNER BY SINGLE PROPORTIONATE MEASURE BETWEEN  
THE WEST 1/4 AND NORTHWEST CORNERS OF SECTION 6. SET A  
2" x 36" IRON PIPE WITH A 3" BRASS CAP STAMPED TO IDENTIFY  
THE CORNER. MONUMENT EXTENDS 6" ABOVE GROUND. MARKED BTS:
- |                 |         |            |
|-----------------|---------|------------|
| MAPLE 9"        | S 18° W | 4.53 FEET  |
| MAPLE 3"        | N 10° E | 5.10 FEET  |
| MAPLE 5"        | N 74° E | 14.64 FEET |
| STEEL SIGN POST | EAST    | 0.5 FEET   |
2. CENTER NORTH 1/16 CORNER, SECTION 6, T 44 N, R 05 W.  
ESTABLISHED CORNER BY PROPORTIONATE MEASURE BETWEEN THE  
CENTER 1/4 AND NORTH 1/4 CORNERS OF SECTION 6. SET A 2" x  
36" IRON PIPE WITH A 3" BRASS CAP STAMPED TO IDENTIFY THE  
CORNER. MONUMENT SET FLUSH WITH GROUND BELOW WOODS ROAD  
SURFACE. MARKED BEARING TREES:
- |                 |         |            |
|-----------------|---------|------------|
| Y. BIRCH 5"     | N 40° W | 18.23 FEET |
| Y. BIRCH 6"     | N 45° E | 38.28 FEET |
| HEMLOCK 9"      | S 15° W | 20.62 FEET |
| STEEL SIGN POST | SOUTH   | 0.5 FEET   |



Stock No. 26273

3. CENTER 1/4 CORNER SECTION 6, T 44 N, R 05 W.  
ESTABLISHED CORNER AT INTERSECTION OF STRAIGHT LINES BETWEEN  
OPPOSING 1/4 CORNERS ON THE PERIMETER OF SECTION 6. SET A  
2" x 36" IRON PIPE WITH A 3" BRASS CAP STAMPED TO IDENTIFY  
THE CORNER. MONUMENT EXTENDS 7" ABOVE GROUND. MARKED BTS:
- |                 |     |         |            |
|-----------------|-----|---------|------------|
| R. PINE         | 12" | S 26° E | 27.29 FEET |
| ASH             | 4"  | N 83° W | 18.40 FEET |
| R. PINE         | 11" | N 51° E | 21.60 FEET |
| STEEL SIGN POST |     | SOUTH   | 0.9 FEET   |
4. SOUTH 1/16 CORNER WEST LINE OF SECTION 6, T 44 N, R 05 W.  
ESTABLISHED CORNER MID POINT ON LINE BETWEEN THE WEST 1/4  
AND SOUTHWEST CORNERS OF SECTION 6. SET A 2" x 36" IRON  
PIPE WITH A 3" BRASS CAP STAMPED TO IDENTIFY THE CORNER.  
MONUMENT EXTENDS 6" ABOVE THE GROUND. MARKED BTS:
- |                 |     |         |            |
|-----------------|-----|---------|------------|
| MAPLE           | 10" | N 52° W | 36.04 FEET |
| ASH             | 3"  | N 06° E | 15.00 FEET |
| ELM             | 4"  | N 51° E | 21.60 FEET |
| STEEL SIGN POST |     | SOUTH   | 0.9 FEET   |
5. SOUTHWEST 1/16 CORNER SECTION 6, T 44 N, R 05 W.  
ESTABLISHED CORNER AT INTERSECTION OF STRAIGHT LINES BETWEEN  
OPPOSING 1/16 CORNERS ON THE PERIMETER OF THE SOUTHWEST 1/4  
OF SECTION 6. SET A 2" x 36" IRON PIPE WITH A 3" BRASS CAP  
STAMPED TO IDENTIFY THE CORNER. MONUMENT EXTENDS 3" ABOVE  
GROUND. MARKED BEARING TREES:
- |                 |     |         |            |
|-----------------|-----|---------|------------|
| MAPLE           | 12" | S 31° E | 12.80 FEET |
| MAPLE           | 12" | S 50° W | 19.02 FEET |
| ASH             | 16" | N 02° W | 14.33 FEET |
| STEEL SIGN POST |     | WEST    | 0.4 FEET   |
6. WEST 1/16 CORNER SECTIONS 6 AND 7, T 44 N, R 05 W.  
ESTABLISHED CORNER BY SINGLE PROPORTIONATE MEASURE BETWEEN  
THE SOUTH 1/4 AND SOUTHWEST CORNERS OF SECTIONS 6. SET A  
A 2" x 36" IRON PIPE WITH A 3" BRASS CAP STAMPED TO IDENTIFY  
THE CORNER. MONUMENT EXTENDS 5" ABOVE GROUND. NO BEARING  
TREES AVAILABLE. SET A STEEL SIGN POST NORTH 0.5 FEET.

## SURVEYORS AFFIDAVIT

STATE OF WISCONSIN)  
COUNTY OF BAYFIELD) SS

I RANDY R. ERICKSON, LAND SURVEYOR FOR THE U.S.D.A. FOREST  
SERVICE AND A REGISTERED LAND SURVEYOR IN THE STATE OF WISCONSIN,  
DO HEREBY CERTIFY THAT I HAVE SURVEYED AND SUBDIVIDED SECTION 6,  
T 44 N, R 05 W, 4TH P.M., BAYFIELD COUNTY, WISCONSIN. DURING  
THIS SURVEY I HAVE COMPLIED WITH THE RULES FOR THE DIVISION OF  
THE PUBLIC LANDS AND APPLICABLE STATE RULES. THE MAP AND  
ACCOMPANYING NOTES ARE A CORRECT AND ACCURATE REPRESENTATION OF  
THE SURVEY TO THE BEST OF MY KNOWLEDGE AND BELIEF.

  
RANDY R. ERICKSON  
WIS. REGISTERED L.S. #1897

7-26-2005  
DATE

