

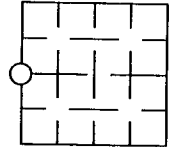
BAYFIELD COUNTY LAND SURVEY MONUMENT RECORD

INSTRUCTIONS: This record shall show the location of the corner and shall include all of the following nine elements (a through i).

(a) Identify the corner by reference to the U.S. land survey system.
○ = Corner monument restored.

West 1/4 corner of Section 31, T. 47 N., R. 8 W., in the Town of Iron River, Bayfield County, Wisconsin.

SECTION 31



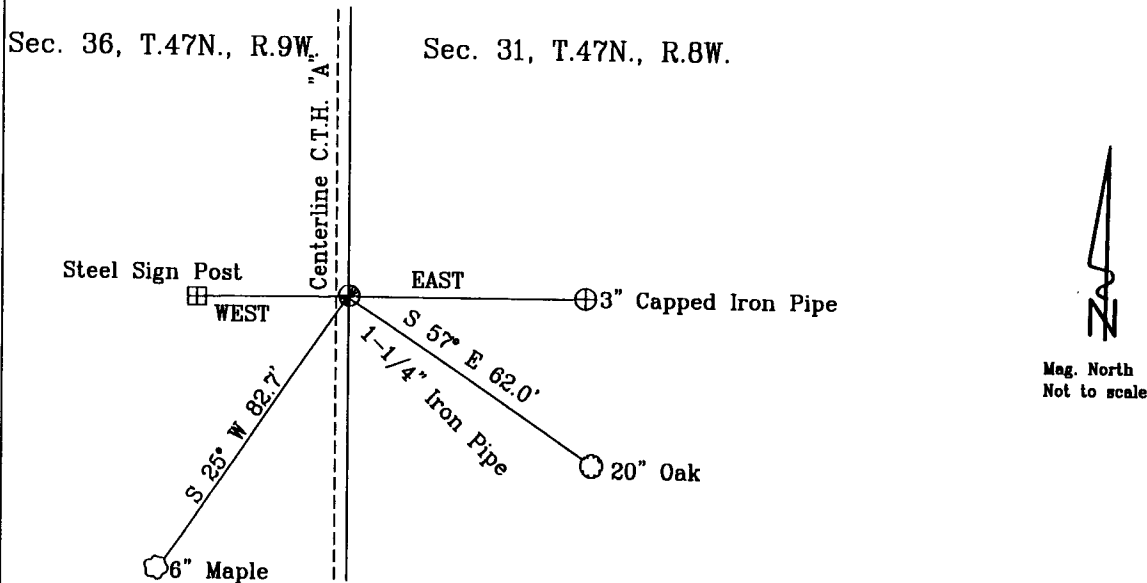
(b) Describe any record evidence, monument evidence, occupational evidence, testimonial evidence or any other material evidence you considered, and whether the monument was found or placed.

On March 17, 2005, I found a 1-1/4" iron pipe at the West 1/4 corner of Section 31. Corner falls 1'± east of the centerline of County Trunk Highway "A" and 2"± below the road surface. Corner common to Section 31, T.47N., R.8W. and Section 36, T.47N., R.9W.

LATITUDE 46° 30' 36.286021"N LONGITUDE 91° 25' 42.887253"W

(c & d) Show a plan view drawing depicting the relevant monuments and reference ties which is sufficient in detail to enable accurate relocation of the corner monument if the corner is disturbed. Indicate North

Witnessed corner as follows: Bearing trees are blazed.

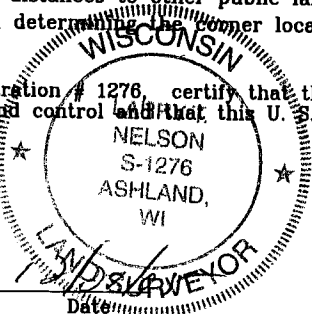


(e) Describe any material discrepancy between the location of the corner as restored or re-established and the location of that corner as previously restored or re-established by distance and direction. Show the discrepancy on the plan view drawing under (d) above. Show the distances between the corner as previously restored or re-established and (1) the corner as restored or re-established, and (2) to at least 2 of the witness monuments shown on the drawing in (d), above. N/A

(f) Was the corner restored through acceptance of (1) an obliterated evidence location, or, (2) a found perpetuated location? A Found Perpetuated Location

(g & h) Was the corner re-established through lost corner proportionate methods? If so, show the method, including the directions and distances to other public land survey corners used as evidence or used for proportioning in determining the corner location. N/A

(i) I, Larry T. Nelson, Registration # 1276, certify that the corner location shown on this record was determined by me or under my direction and control and that this U.S. Public Land Survey Monument Record is correct to the best of my knowledge and belief.



Signature: [Handwritten signature]

Date: [Blank]

SECTION 31, T. 47 N., R. 8 W.

NELSON SURVEYING INCORPORATED
101 W. MAIN STREET SUITE 207 ASHLAND, WISCONSIN 54806
(715) 682-2692 FAX: (715) 682-5100
SURVEYING NORTHERN WISCONSIN SINCE 1954
WWW.NELSONSURVEYING.COM ©

Bayfield County PLSS Monument Record

Point:

WI ID#:

Description of Found Monument:

Condition of Monument:

Date of Field Work:

Northing:

Easting:

Date of Perpetuation:

Perpetuated By:

Rating of Coordinates:

Picture #1:

Picture #2:

Comment:

Latitude:

Longitude:

Section:

Town:

Range:

Picture of Monument:

