

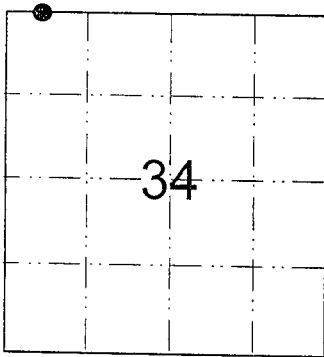
S 107270029
 T R SEC ROW COL

U.S. PUBLIC LAND SURVEY MONUMENT RECORD

Note: This form is intended and designed to fulfill all requirements of Wisconsin Administrative Code, Chapter A-E 7.08, U.S. Public Land Survey Record (3) (a)(b)(c)(d)(e)(f)(g)(h)(i).

- (a) Identify the corner by reference to the U.S. public land survey system.

Corner NW MEA.
 Section SEC. 34
 Township T 51N North
 Range R 7W West
 Town/City/Village CLOVER
 Bayfield County



Corner
 ● = Monument
 Restored

- (b) Describe any record evidence, monument evidence, occupational evidence, testimonial evidence, or any other material evidence you considered, and whether the monument was found or placed.

Found and accepted a meander corner that had been reset on top of bank from older survey map (NSI). I accepted this location.

- (c & d) Provide plan view drawing on reverse side.

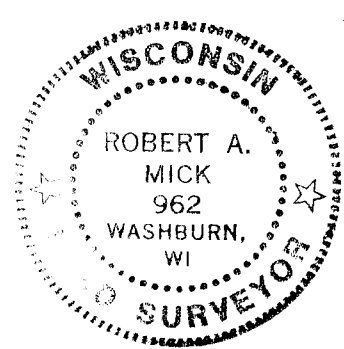
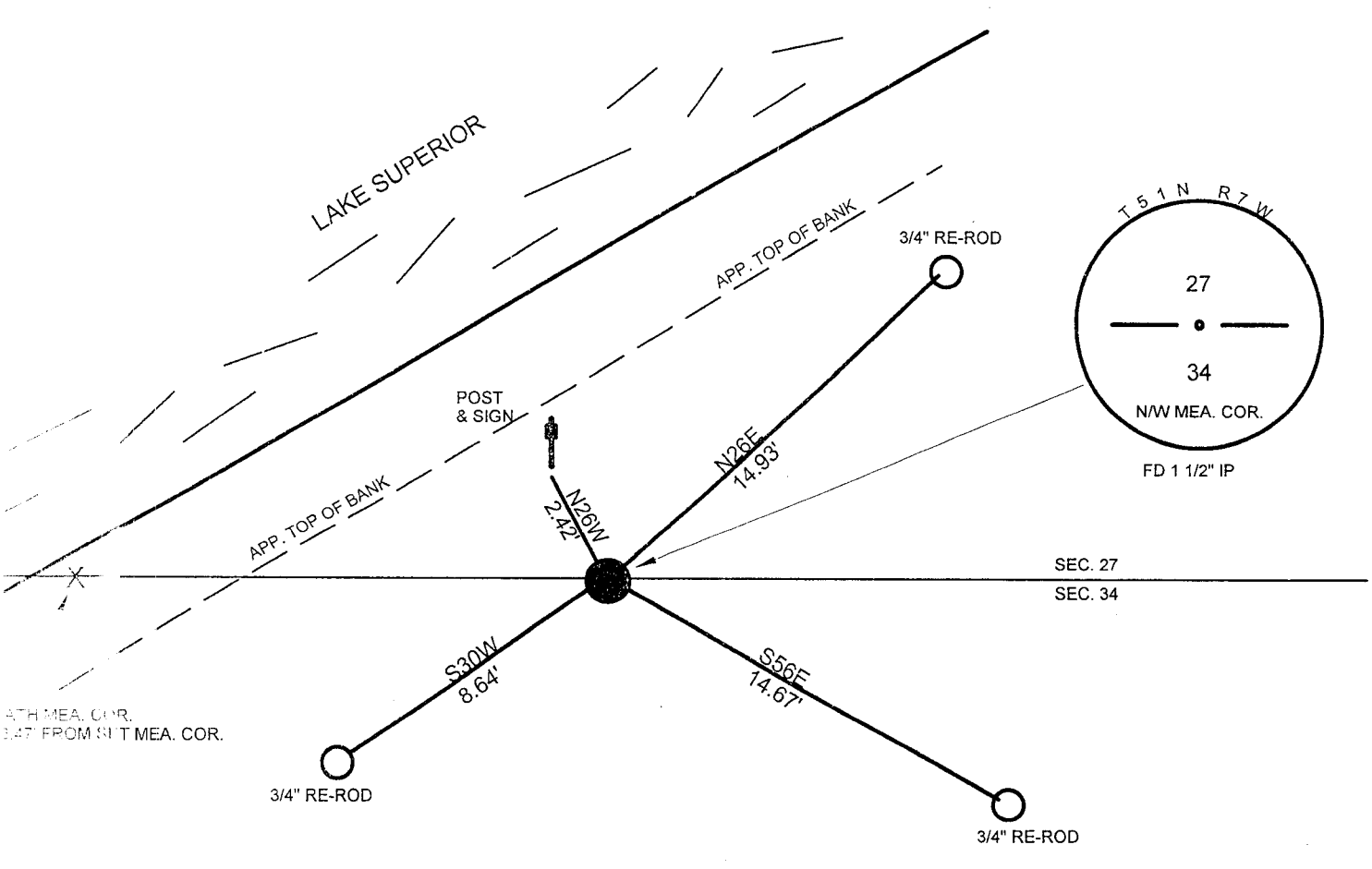
- (e) Describe any material discrepancy between the location of the corner as restored and the location of the corner as previously restored or reestablished. Show the discrepancy on the plan view drawing.

None

- (f) Was the corner restored through acceptance of an obliterated location or a found perpetuated location?

- (g & h) Was the corner reestablished through lost corner proportionate methods? If so, show the method, including the directions and distances to other public land survey corners used as evidence.

- (c) In the plan view below, provide reference ties to at least four witness monuments, or, if the location is within a municipality, to at least two witness monuments. (Witness monuments shall be of concrete, natural stone, iron, bearing trees, or other equally durable material.
- (d) In the plan view drawing depict the relevant monuments and reference ties which are sufficient in detail to enable accurate relocation of the corner monument if the corner monument is disturbed.



I, Robert A. Mick, Registration Number S-962 certify that the corner location on this record was determined by me or under my direction and that this U.S Public Land Survey Monument Record is correct and complete to the best of my knowledge and belief.

Robert A. Mick
Signature

10-06-05
Date

FILED
OCT 11 2005
BAYFIELD CTY LAND RECORDS DEPT.