

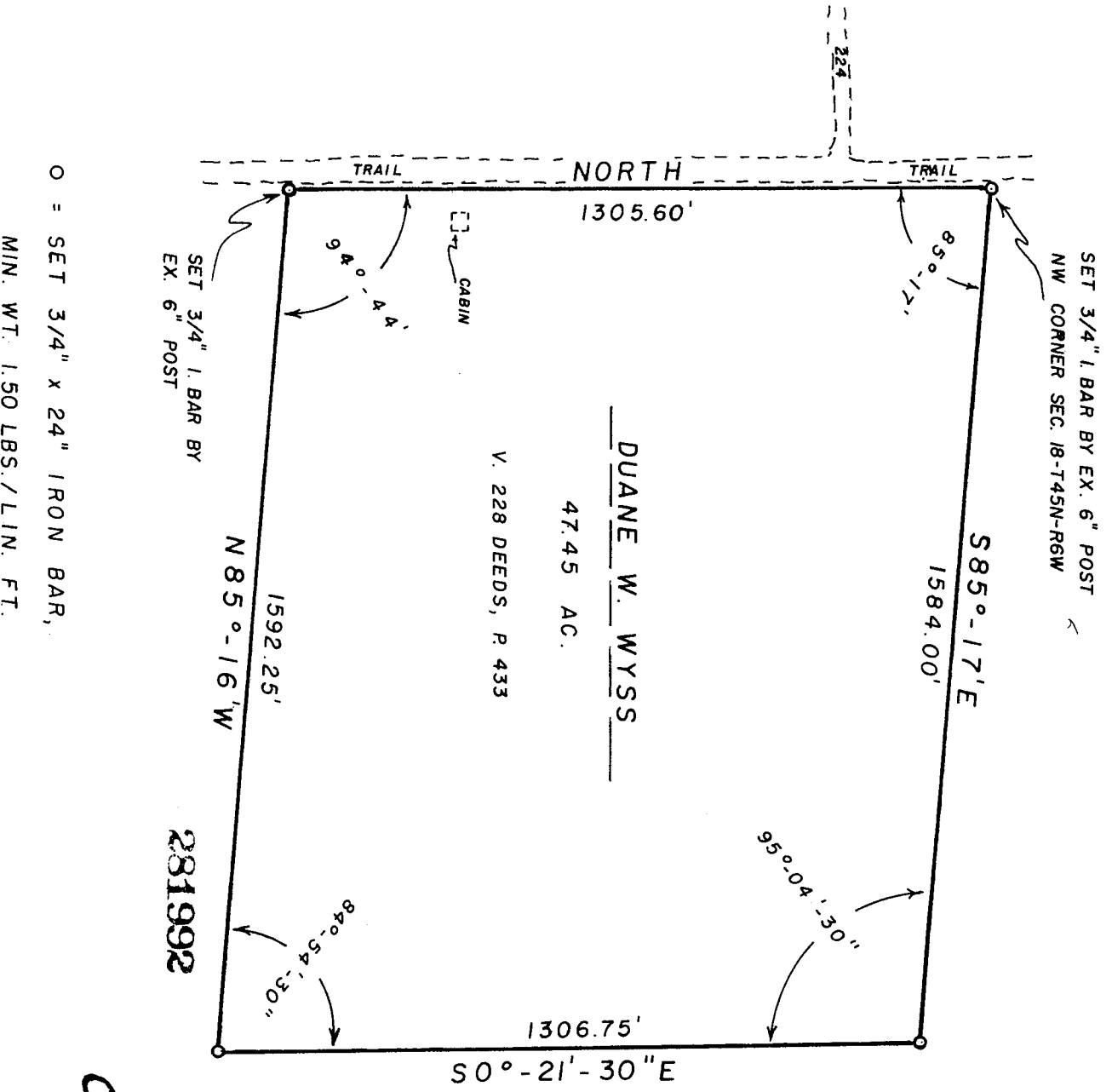
UNOFFICIAL COPY

#1 6/8

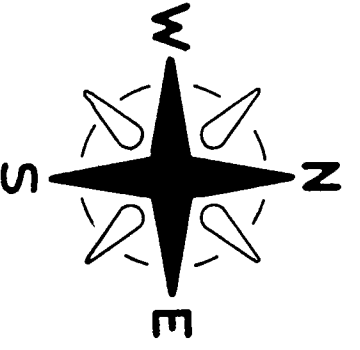
Contact the Bayfield County Register of Deeds Office to obtain an official copy of this document.

NW 1/4 NW 1/4 18-45-6

58



O = SET 3/4" x 24" IRON BAR,
MIN. WT. 1.50 LBS./LIN. FT.



SCALE · 1" = 300'
13 Nov. 1971

SURVEYOR'S CERTIFICATE

I, F. W. Zietlow, being a duly qualified Surveyor, do hereby certify that by the order and under the direction of Mr. Duane W. Wyss, I have surveyed and mapped the property described and the within map is the true and correct representation of the exterior boundaries of the land surveyed and that I have fully complied with the provisions of Chapter 236 of the Wisconsin Statutes to the best of my knowledge and belief.

F. W. Zietlow
F. W. ZIETLOW, REGISTERED LAND SURVEYOR
VACATION LAND SURVEYOR'S INC.
, GORDON, WISCONSIN

000058
CSM NO.

CERTIFIED SURVEY MAP

Of the
Frac. NW 1/4 - NW 1/4, Sec. 18-1/4 5N-6W,
Town of Grandview, Bayfield County,
Wisconsin