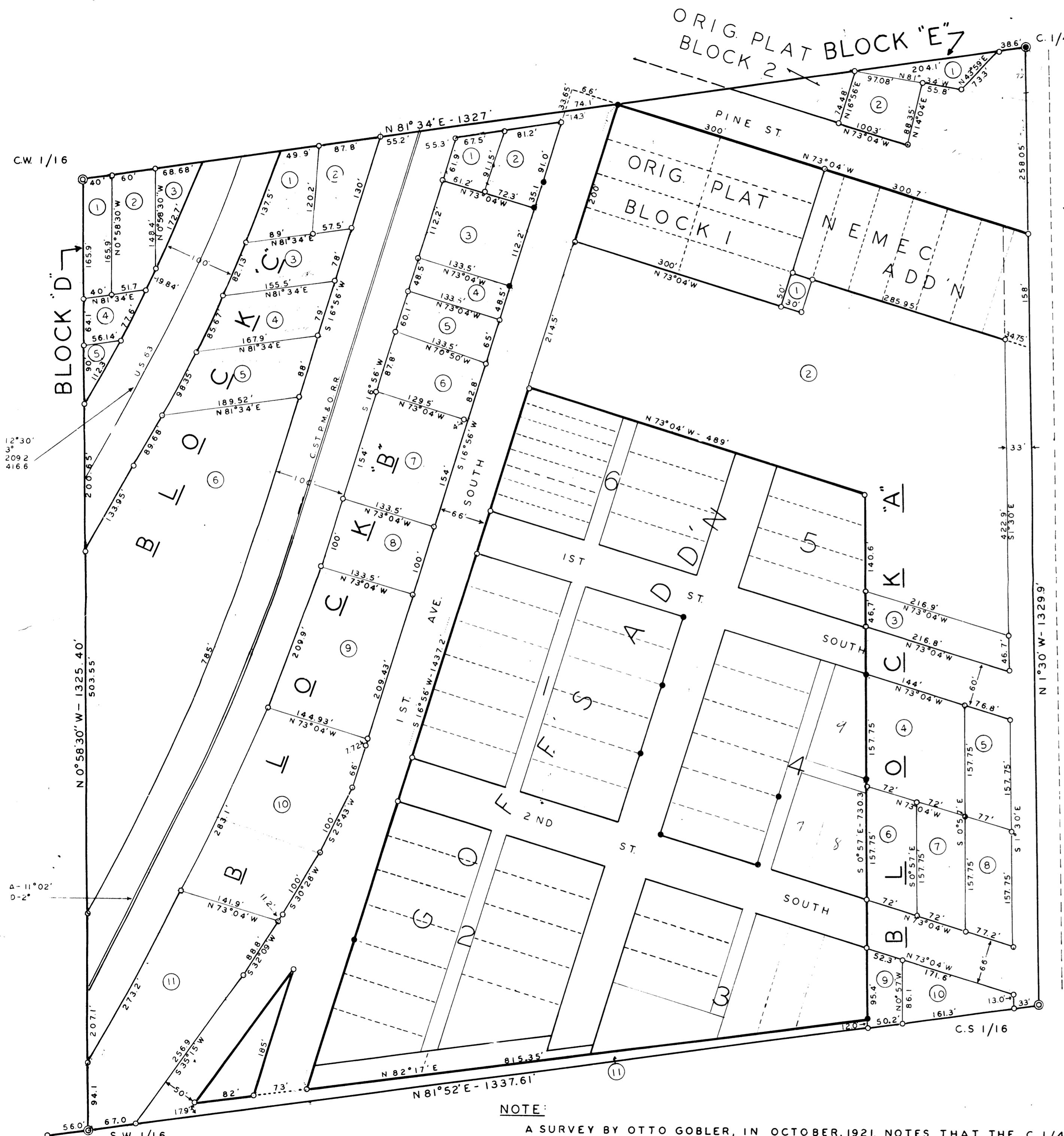


ASSESSOR'S PLAT NO. 1 - **UNOFFICIAL COPY**  
 VILLAGE OF CABLE, WISCONSIN  
 - THE NE 1/4 OF THE SW 1/4 OF SECTION  
 18, T 43 N, R 7 W, BAYFIELD CO., WIS. -

This document has not been recorded with the Bayfield County Register of Deeds Office.



**SURVEYOR'S CERTIFICATE**

I, THOMAS W. NELSON, SURVEYOR, HEREBY CERTIFY:  
 THAT I HAVE SURVEYED, DIVIDED & MAPPED "ASSESSOR'S PLAT NO. 1" IN THE VILLAGE OF CABLE, COUNTY OF BAYFIELD, & STATE OF WISCONSIN.  
 THAT I HAVE MADE SUCH SURVEY, LAND-DIVISION & PLAT BY THE DIRECTION OF THE BOARD OF THE VILLAGE OF CABLE, ORDERED ON AUGUST 8, 1961, AT A REGULAR MEETING OF SAID BOARD.  
 THAT SUCH PLAT CONSISTS OF THE NE 1/4 OF THE SW 1/4 OF SECTION 18, T 43 N, R 7 W, 4TH. PRINCIPAL MERIDIAN.  
 THAT SUCH PLAT IS A CORRECT REPRESENTATION OF ALL THE EXTERIOR BOUNDARIES OF THE LAND SURVEYED & THE SUBDIVISION THEREOF MADE.  
 THAT I HAVE FULLY COMPLIED WITH THE PROVISIONS OF CHAPTER 70.27 OF THE WISCONSIN STATUTES OF 1961, IN SURVEYING, DIVIDING, & MAPPING SAME.

*Thomas W. Nelson*  
 THOMAS W. NELSON  
 BAYFIELD CO. SURVEYOR  
 WIS. REG. NO. S-263

**VILLAGE BOARD RESOLUTION**

RESOLVED, THAT "ASSESSOR'S PLAT NO. 1", IN THE VILLAGE OF CABLE, IS HEREBY APPROVED BY THE VILLAGE BOARD.

APPROVED *John Matyka*  
 VILLAGE PRESIDENT  
 SIGNED *John Matyka*  
 VILLAGE PRESIDENT

I HEREBY CERTIFY THAT THE FOREGOING IS A COPY OF A RESOLUTION ADOPTED BY THE VILLAGE BOARD OF THE VILLAGE OF CABLE, AND THAT ALL PROVISIONS OF CHAPTER WISCONSIN STATUTES HAVE BEEN COMPLIED WITH.

*Paul S. Regorran*  
 PAUL S. REGORRAN  
 VILLAGE CLERK

FEB 12, 196  
 DATE

**LEGEND**

- ⊙, ⊙ 2" X 40" CAPPED PIPE
  - LOT & BLOCK CORNERS FOUND IN PLACE
  - ⊙ LOT & BLOCK CORNERS SET
  - ⊕ LOT NUMBER
- BEARINGS ARE TRUE, BASED ON SOLAR OBSERVATIONS  
 SCALE - 1 INCH = 100 FEET

SHEET 1 COMPLETED - DECEMBER 26, 1962

**NOTE:**

A SURVEY BY OTTO GOBLER, IN OCTOBER, 1921, NOTES THAT THE C 1/4 AS FOUND BY HIM, WAS AN IRON ROD 13.2' EAST, & 23.1' NORTH OF T. A. J. LYTLE, C.E., IN A SURVEY IN JUNE, 1936, ALSO USED THIS LOCATION, AND, IN ADDITION, SET THE CW 1/16 1327' FROM THE C-1/4.  
 DUE TO THE FACT THAT ALL THE DESCRIPTIONS ARE BASED ON THE CORNERS AS ABOVE NOTED, AND THAT THE CORNERS HAVE BEEN MORE THAN 40 YEARS, THEY WERE USED IN THE LAYOUT OF THIS PLAT, & THE SUBDIVISION OF SECTION 18.