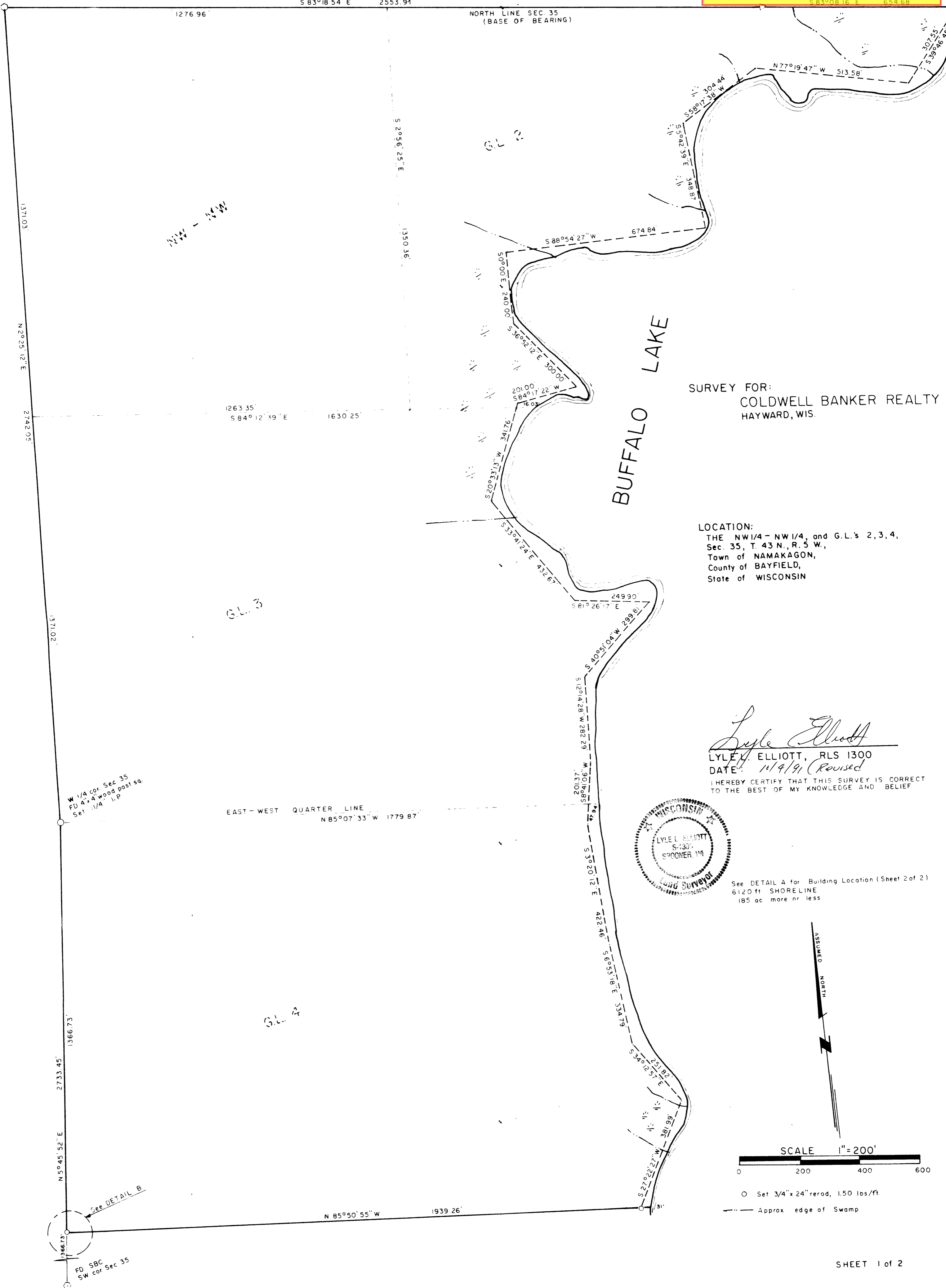


UNOFFICIAL COPY

This document has not been recorded with the Bayfield County Register of Deeds Office.

FD SBC
NW cor. Sec 35



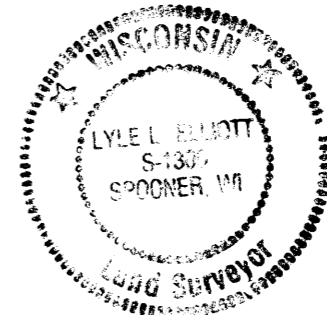
SURVEY FOR:
COLDWELL BANKER REALTY
HAYWARD, WIS.

LOCATION:
THE NW 1/4 - NW 1/4, and G.L.'s 2, 3, 4,
Sec. 35, T. 43 N., R. 5 W.,
Town of NAMAKAGON,
County of BAYFIELD,
State of WISCONSIN

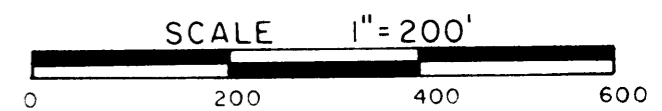
Lyle Elliott
LYLE E. ELLIOTT, RLS 1300

DATE: 11/4/91 (Revised)

I HEREBY CERTIFY THAT THIS SURVEY IS CORRECT
TO THE BEST OF MY KNOWLEDGE AND BELIEF.



See DETAIL A for Building Location (Sheet 2 of 2)
6120 ft SHORELINE
185 ac more or less



- Set 3/4" x 24" rod, 1.50 lbs/ft.
- Approx edge of Swamp

