

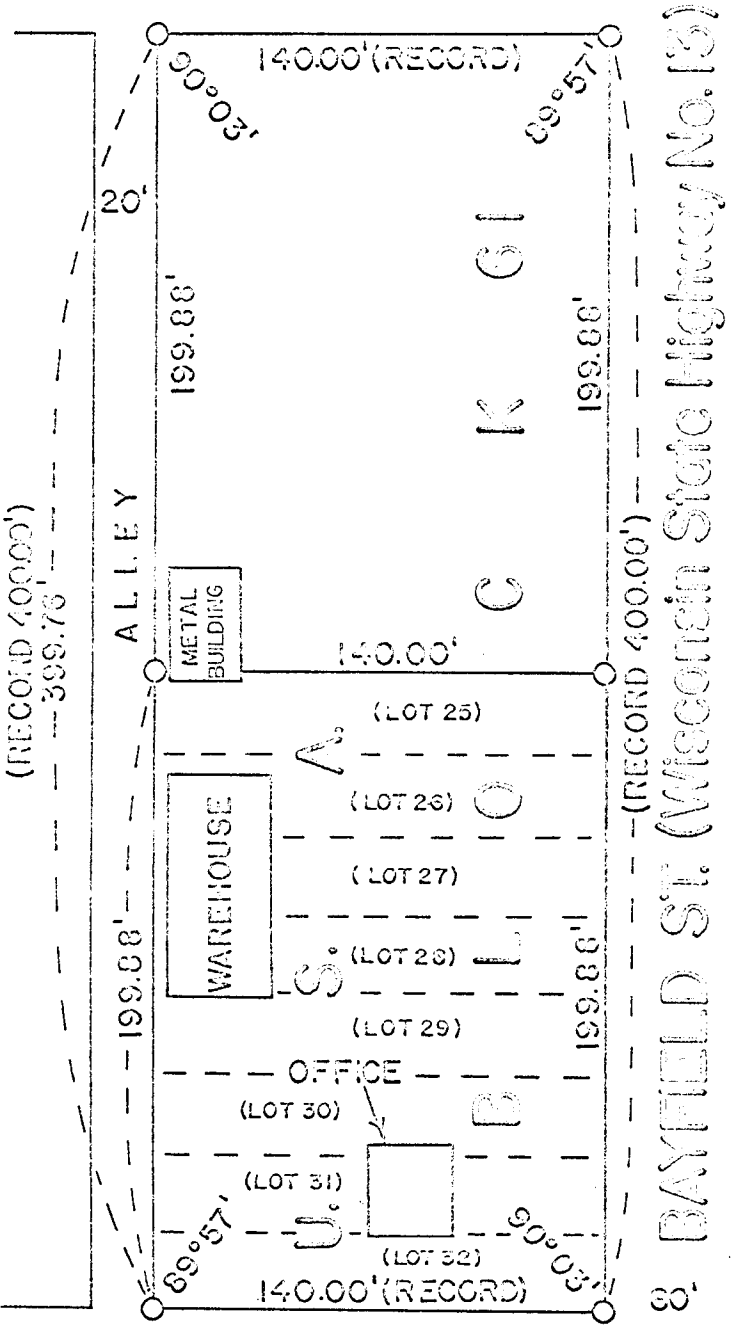
SW 56 - 32 - 49 - 4

UNOFFICIAL COPY
256696
Contact the Bayfield County Register of Deeds Office to obtain an official copy of this document.

PLAT OF SURVEY

U. S. GOVERNMENT LAND
LOTS 25-26-27-28-29-30-31-32, BLOCK 61
BEING A PART OF
TOWNSITE OF WASHBURN, WISCONSIN
BAYFIELD COUNTY
SCALE: 1"=60 feet.

SECOND AVE. 66'



LEGEND

○ Corner established. Set 2" dia., 30" long, flanged bottom, galvanized iron pipe with galv. iron cap.

STATE OF WISCONSIN)
COUNTY OF BAYFIELD) ss.

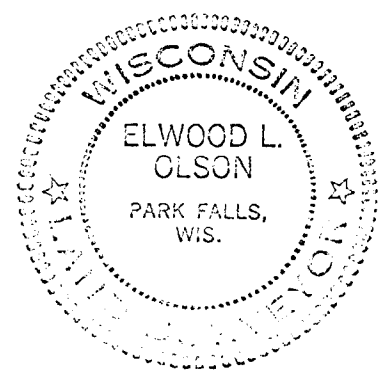
I, Elwood L. Olson, Registered Land Surveyor, do hereby certify that I have surveyed and delineated lots 25-26-27-28-29-30-31-32 of Block 61 of Townsite of Washburn, Wisconsin, Bayfield County, in accordance with the plat of record thereof. The original Block corner monuments are no longer in existence. The streets and avenues in said Townsite have been accepted as being constructed in accordance with the original survey monuments and subsequent surveyors have executed surveys in the Townsite on this basis. I accepted the street and avenues as being the best evidence available of the original survey lines.

Reference: Boundary Control and Legal Principals by Curtis M. Brown. Section 141.
Principal: In the absence of natural monuments or evidence of lines actually run by the original surveyor, improvements, such as curbs and paving, which were installed in accordance with the original survey monuments, are presumed controlling.

The plat hereon is an accurate representation of the survey made by me. I have complied with the rules governing land surveying in surveying the same.

Elwood L. Olson
Cadastral Surveyor - U. S. Forest Service
Wisconsin Registered Land Surveyor
Certificate No. S-785

Date of survey: June 1966



ON WSD
900006

A 88