

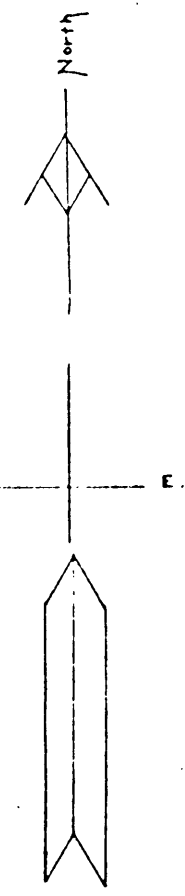
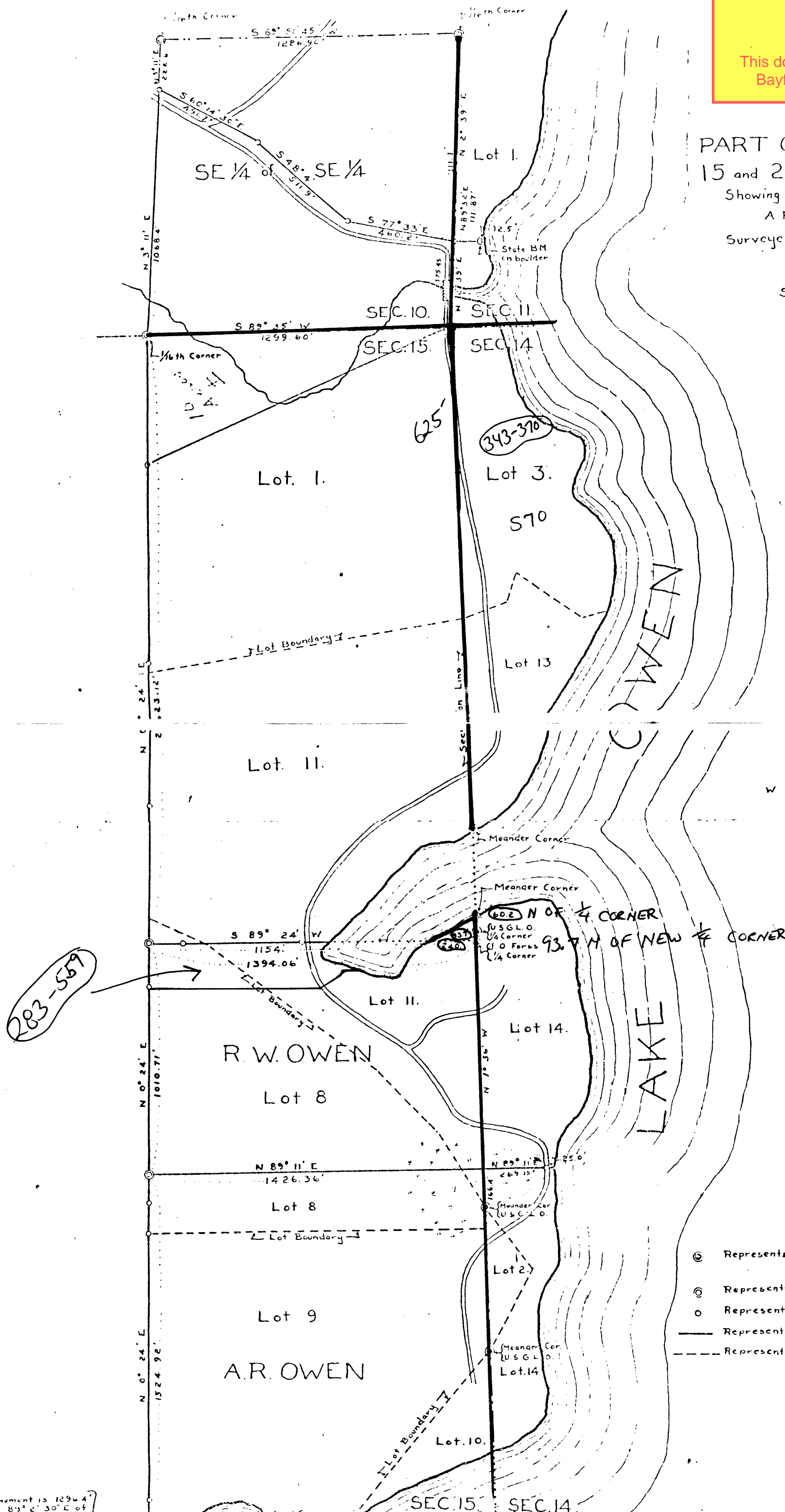
**UNOFFICIAL COPY**

This document has not been recorded with the Bayfield County Register of Deeds Office.

OF  
PART OF SECTIONS 10, 11, 14,  
15 and 22, T 44N., R 7 W

Showing boundaries of lands owned by  
A. R. Owen and R. W. Owen  
Surveyed by Jerod W Day, Ashland, Wis.  
December 12, 1930.

Scale 1 inch = 300 Feet.



**LEGEND**

- ⊙ Represents Iron Pipe Monument with Brass Top Set by U.S. General Land Office.
- ⊙ Represents Iron Pipe Monument with Cap of same
- Represents Small Iron Pipe or Pin.
- Represents Property Boundary Line
- - - Represents Government Lot Boundary Line

12-11-3

Monument is 1296.4' N 83° 2' 30" E of