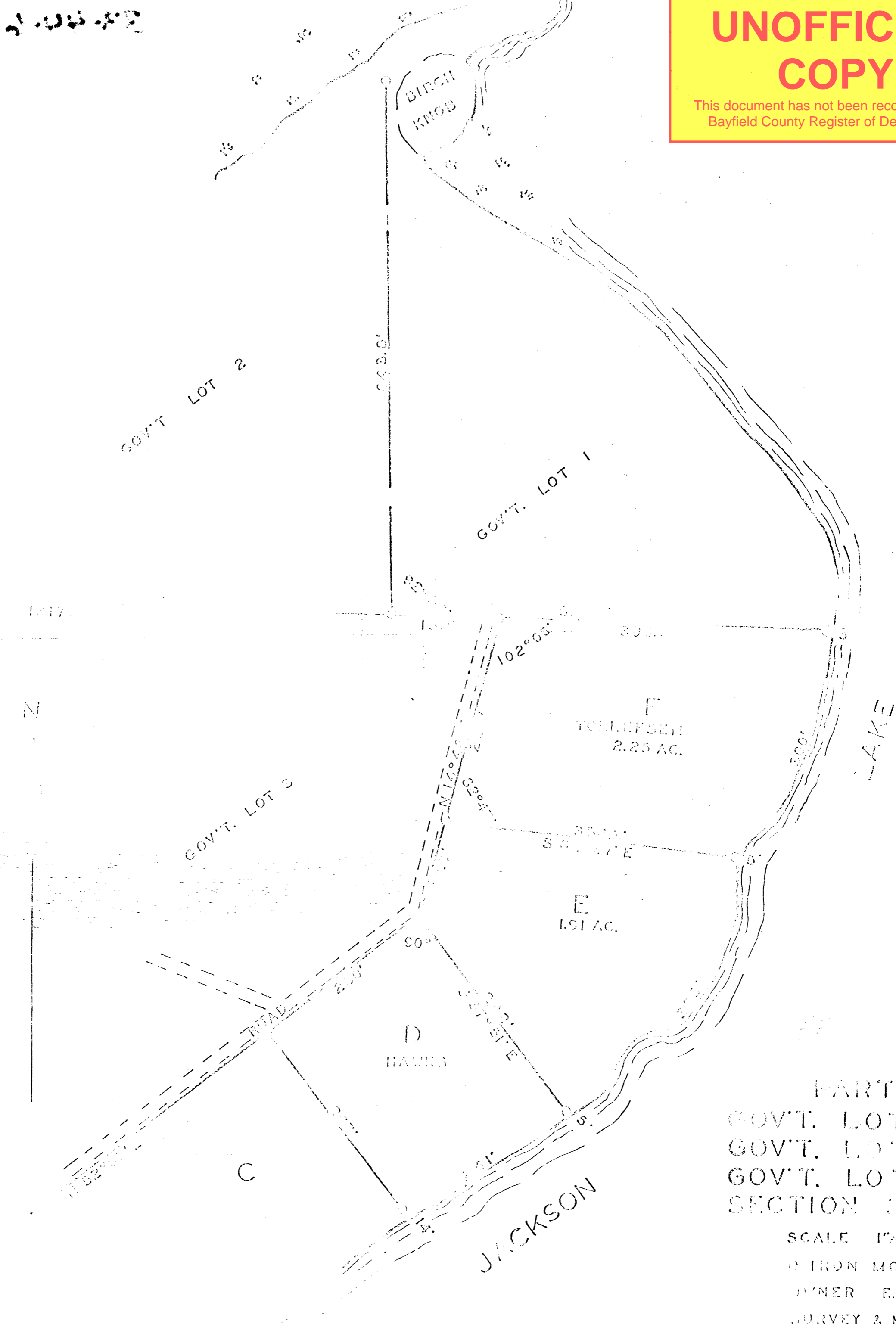


UNOFFICIAL COPY

This document has not been recorded with the Bayfield County Register of Deeds Office.



PART OF
GOV'T. LOT 1
GOV'T. LOT 2
GOV'T. LOT 3
SECTION 38 T 44

SCALE 1" = 100'
IRON MONUMENT
OWNER E. L. ...
SURVEY & MAP BY
EDWARD ...