

UNOFFICIAL COPY

This document has not been recorded with the Bayfield County Register of Deeds Office.

TOWN OF DRUMMO

LEGEND

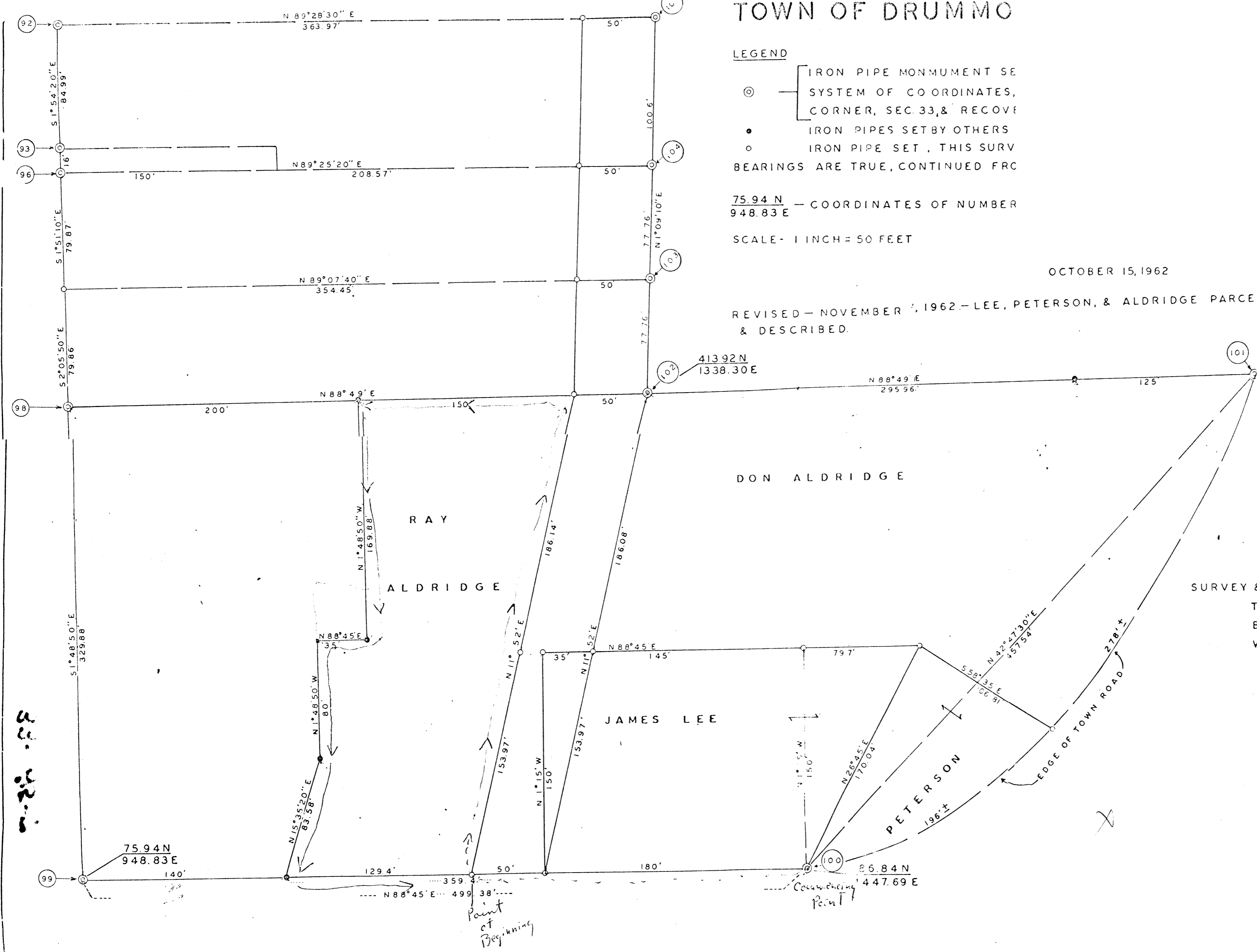
- ⊙ — IRON PIPE MONUMENT SE SYSTEM OF COORDINATES, CORNER, SEC. 33, & RECOVER
 - — IRON PIPES SET BY OTHERS
 - — IRON PIPE SET, THIS SURV
- BEARINGS ARE TRUE, CONTINUED FROM

$\frac{75.94 N}{948.83 E}$ — COORDINATES OF NUMBER

SCALE - 1 INCH = 50 FEET

OCTOBER 15, 1962

REVISED - NOVEMBER 4, 1962 - LEE, PETERSON, & ALDRIDGE PARCELS MONUMENTED & DESCRIBED.



SW 1/4 NW 1/4
33-45-7

SURVEY & MAP BY:
THOMAS W. NELSON
BAYFIELD CO. SURVEYOR
WIS. REG. NO. S-263

33-45-7

Point of Beginning

Commencing Point