

# 1017

This map is not legible in this format. Please refer to hard copy map #1017 on file in the Land Records Office.

4-46-8

PLAT  
PARCELS IN  
NE 1/4 - NE 1/4 - SEC 4  
TWP 46 N - R. 8 W



SCALE 1" = 100'

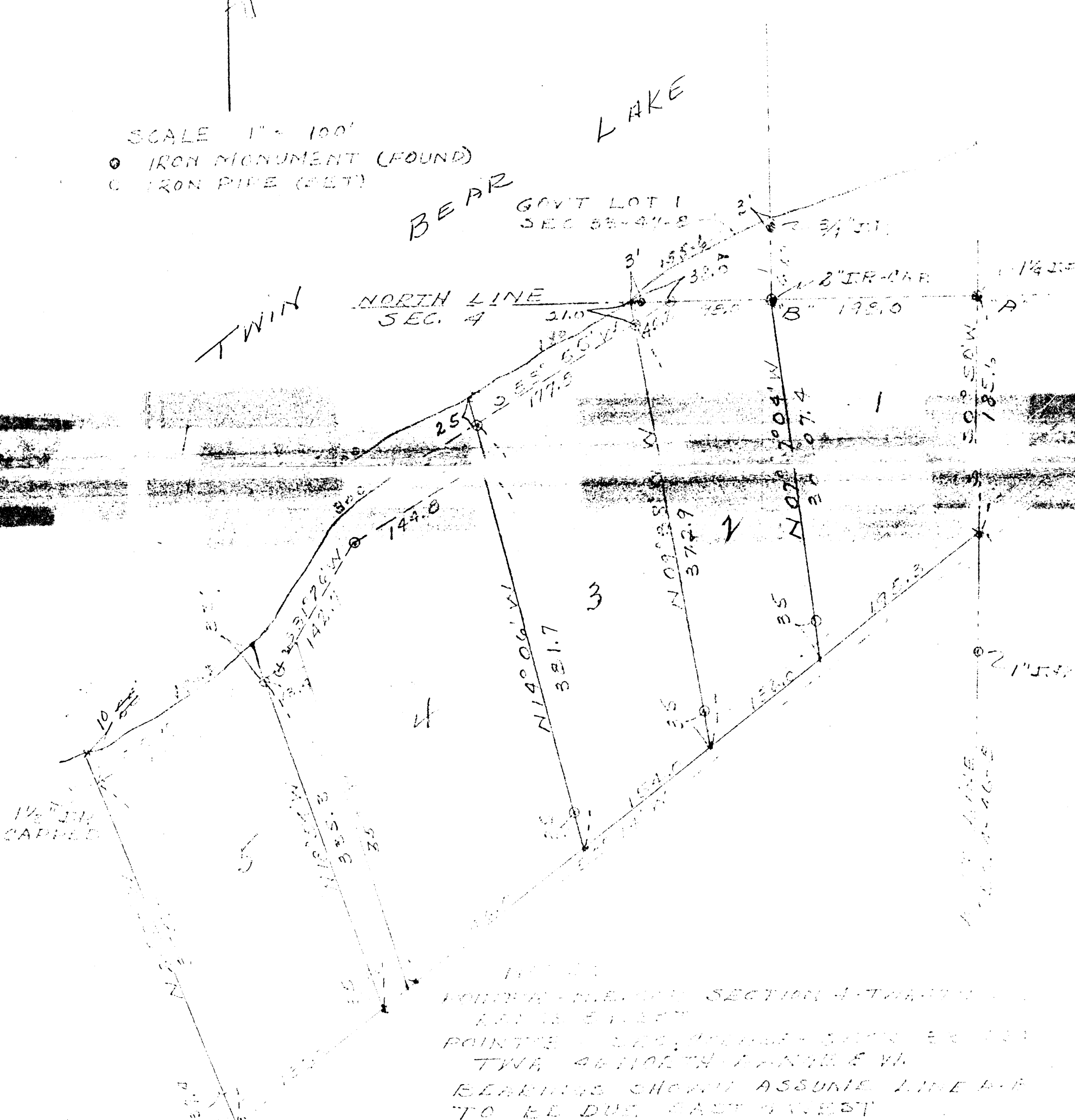
- IRON MONUMENT (FOUND)
- IRON PIPE (SET)

BEAR LAKE

TWIN

GOVT LOT 1  
SEC 35-41-8

NORTH LINE  
SEC. 4



SECTION 4 - TWP 46 N - R. 8 W  
 POINTS - SEE ABOVE - SEE SEC 35  
 TWP 46 NORTH - RANGE 8 W.  
 BEARINGS SHOWN ASSUME LINE A-B  
 TO BE DUE EAST & WEST

Kenneth Olson

Survey July 25-1964

KENNETH OLSON  
SURVEYOR

ROUTE 1, BOX 166 - SOUTH DAKOTA